

From Immediate Acceptance to Deferred Acceptance: Effects on School Admissions and Achievement in England

Camille Terrier
Queen Mary University of London

Parag A. Pathak
MIT and NBER

Kevin Ren*
Northwestern University

August 2024

Abstract

Countries and cities around the world increasingly rely on centralized systems to assign students to schools. Two algorithms, deferred acceptance (DA) and immediate acceptance (IA), are widespread. The latter is often criticized for harming disadvantaged families who fail to get access to popular schools. This paper investigates the effect of the national ban of the IA mechanism in England in 2008. Before the ban, 49 English local authorities used DA and 16 used IA. All IA local authorities switched to DA afterwards, giving rise to a cross-market difference-in-differences research design. Our results show that the elimination of IA reduces measures of school quality for low-SES students *more* than high-SES students. After the ban, low-SES students attend schools with lower value-added and more disadvantaged and low-achieving peers. This effect is primarily driven by a decrease in low-SES admissions at selective schools. Our findings point to an unintended consequence of the IA to DA transition: by encouraging high-SES parents to report their preferences truthfully, DA increases competition for top schools, which crowds out low-SES students.

*We thank John Coldron and Anne West for sharing data on schools. Simon Burgess, Caterina Calsamiglia, Christopher Campos, Julien Combe, Ellen Greaves, Rustamdjan Hakimov, Adam Kapor, Sandra McNally, Jonathan de Quidt, Olmo Silva, and Olivier Tercieux and seminar participants at the London School of Economics, ASSA 2020 meetings, Barcelona GSE, CESifo Area Conference on Economics of Education, CREST Polytechnique, Bristol, Berlin, and Lausanne provided helpful feedback. We're especially grateful to Kate Bradley and Tiernan Evans for research assistance and Eryn Heying for invaluable administrative support. We are very grateful for the research assistance provided by the Centre for Economic Performance (LSE). We gratefully acknowledge funding from the Walton Foundation. Pathak is a co-founder of Avela Education.

1 Introduction

The use of centralized assignment systems in education markets has risen sharply in recent years. Between 1970 and 2020, more than 90 countries have adopted centralized systems to assign students to schools or universities (CCAS Project, 2021). These systems have three common features: (i) students submit preferences over schools, (ii) schools use admission criteria to prioritize students, and (iii) a central administration uses an algorithm to determine admission offers. When facing this last choice, more than thirty countries have adopted deferred acceptance (DA) and a dozen have chosen immediate acceptance (IA). The widespread adoption of these two schemes has led to active discussions on their benefits and costs.

DA is strategy-proof, meaning that participants do not gain from reporting their preferences untruthfully. Under IA, participants could gain from reporting preferences dishonestly (Abdulkadiroğlu and Sönmez, 2003). The scope for preference manipulation in IA has given rise to two main concerns. First, IA is criticized for harming families who may be less sophisticated about admissions procedures (Abdulkadiroğlu et al., 2006; Pathak and Sönmez, 2008).¹ Second, growing evidence from cities using IA shows that low-SES families are usually those who do not understand how to strategize (Dur, Hammond and Morrill, 2018; Abdulkadiroğlu et al., 2006; Calsamiglia and Güell, 2018; Agarwal and Somaini, 2018). The type of mechanism used and its vulnerability to parent strategies could therefore contribute to socioeconomic gaps in school access and educational outcomes.

Concerns about the harm of IA for low-SES families motivated several authorities, including in Amsterdam, Boston, and China, to replace IA by variants of DA (Pathak, 2016; Chen and Kesten, 2017; De Haan et al., 2023). Our study focuses on England, which banned IA throughout the country in 2008 through an Act of Parliament, in part because “those who get it wrong or don’t understand, lose out” (Carter, 2006). We study how the transition from IA to DA in England affected school admissions and achievement for low and high-SES students. We use evidence of an SES gradient in parent strategies to motivate our assumption that socioeconomic status proxies for levels of sophistication.

Theoretically, whether low-SES students benefit from moving to DA is unclear. On one hand, survey evidence shows that parents have incorrect beliefs about admission chances (Kapor, Neilson and Zimmerman, 2020). This leads sophisticated parents to strategically avoid ranking over-demanded schools in which they could sometimes have been accepted.² These costly mistakes reduce the competition faced by low-SES students and allows them to access sought-after schools.

¹Immediate acceptance is also known as the Boston mechanism.

²Several lab experiments show high levels of preference manipulation under immediate acceptance (Chen and Sönmez, 2006; Pais and Pintér, 2008; Calsamiglia, Haeringer and Klijn, 2011), a finding which has been confirmed in various cities that use the IA mechanism or a variant, such as Barcelona, Beijing, Cambridge MA, or New Haven (Agarwal and Somaini, 2018; He, 2017; Calsamiglia and Güell, 2018; Kapor, Neilson and Zimmerman, 2020).

We refer to this as the *competition-for-top-schools* effect.³ At the same time, low-SES students who rank schools truthfully under IA may have lower admissions chances at second or third choices because they obtain admissions offers only after other students who rank those schools first. We term this the *trickle-down* effect. Ultimately, how much low-SES students benefit (or lose) from IA depends on whether the competition-for-top-schools effect dominates the trickle-down effect. That balance depends on the uncertainty on admission chances, the level of competition for top schools, and the extent of oversubscription on second and third choices.

Empirically, whether low-SES students benefit from moving to a strategy-proof mechanism is also unclear. Substantial progress has been made in estimating welfare effects of the IA-to-DA transition using data on applicant rankings under the IA mechanism and variants (Agarwal and Somaini, 2018; Calsamiglia, Fu and Güell, 2020; De Haan et al., 2023; He, 2017; Hwang, 2017; Kapor, Neilson and Zimmerman, 2020). By combining choice models, new methods to recover preferences from untruthful mechanisms, and within-market counterfactual analysis, these studies compare allocations and welfare under DA and IA. Research finds mixed evidence on whether unsophisticated parents benefit more than sophisticated parents.⁴ An alternative approach compares outcomes across IA and DA markets that change mechanisms. However, evidence based on such cross-market comparisons is scant, primarily due to the lack of comparison markets that change mechanisms.⁵

A nationwide reform that banned IA in England provides an opportunity to fill this gap. The third School Admissions Code, which came into force in February 2007, and applied to admissions from September 2008, forced a portion of English local authorities (entities similar to US school districts) to switch from IA to DA. Before the reform, 49 local authorities used DA and 16 used IA.⁶ After the ban, all IA local authorities switched to DA. Using a difference-in-differences research design, we compare the evolution of outcomes in the local authorities that went from IA to DA (the treated group) and those that used DA during the entire period (the control group). Our outcomes are students' access to their stated first choice school, school value-added, school peer composition, access to selective schools, and between-group achievement inequality three years after school assignment.⁷

We also study how the level of competition for students' top choices influences the effect of the

³Dur, Hammond and Morrill (2018) and Pathak and Sönmez (2013) find suggestive evidence of this effect in Charlotte-Mecklenburg and Chicago.

⁴While many papers find that sophisticated parents lose more from the IA-to-DA transition than sincere parents (Agarwal and Somaini, 2018; He, 2017; Hwang, 2017), Calsamiglia, Fu and Güell (2020) find the opposite. Kapor, Neilson and Zimmerman (2020) show that students can benefit from DA over IA when parents have incorrect beliefs about admission chances.

⁵Chen, Jiang and Kesten (2020) and Song, Tomoeda and Xia (2020) are the only other studies that study the effect of the transition from IA to DA in China. We discuss these papers at the end of the introduction.

⁶There are 152 local authorities in England that are responsible for coordinating the allocation of students to one of the 3,963 secondary schools across the country. Aside from the 16 IA and 49 DA authorities, the other local authorities use a mechanism that is hybrid between IA and DA, as explained in Section 3.

⁷The outcome variables for school characteristics are measured pre-reform. We do not have individual data on parents' reported preferences. Data on students' access to their stated first choice school is aggregated at the local authority level.

IA-to-DA transition. The *competition-for-top-schools* effect suggests that the larger the competition for top-ranked schools, the more low-SES students gain from IA relative to DA when high-SES parents strategically avoid applying to top-ranked schools. Fortunately, England offers a rich environment to test this hypothesis because some local authorities have more heterogeneity in school performance and, as a result, greater levels of oversubscription at schools.⁸ Our hypothesis is that the effect of the IA ban is amplified in these *competitive local authorities*. Our setting also allows us to take into account the availability of private schools which provide an outside option and may weaken sophisticated parents' incentives to strategize (Akbarpour et al., 2022).

Before the reform, we find that the IA mechanism increased parents' access to their stated first choice by 26 percentage points (pp) compared to DA. This boost is only present in competitive local authorities. This fact supports our claim that the type of mechanism used is more likely to affect assignments in environments with significant competition over schools. Next, we find that access to the stated first choice dropped by eight pp in competitive IA local authorities (compared to DA local authorities) in the two years that followed the ban of the IA mechanism.⁹ This effect size is on the lower end of those found by Chen, Jiang and Kesten (2020) after the IA-to-DA transition in China and may reflect differences in the competitive environment across the settings.¹⁰

We next examine whether high- and low-SES students were differentially affected by the ban. The first outcome we consider is the value-added of the school students attend, which we measure as the school's contribution to students success at the national GCSE exams, a high-stakes standardized assessment taken by all pupils in England at age 15.¹¹ Value-added is an important outcome as low-SES students attend schools whose value-added is 10.4 pp lower than high-SES students before the 2008 reform. We find that the transition from IA to DA led to a 7.7% increase in this gap. In local authorities using IA (compared to DA), the value-added of the schools that low-SES students attended dropped by 0.8 pp after the ban compared to the school value-added of high-SES students.

Reduced access to high value-added schools suggests that eliminating IA may not increase low-SES student achievement. However, a school's value-added need not affect measures of student welfare if low-SES parents do not value school effectiveness (see, e.g., Abdulkadiroğlu et al. (2020)). We therefore also examine effects of the IA-to-DA transition on students' peers' characteristics.

⁸Overall, about 31% of schools were oversubscribed in 2006 (Coldron et al., 2008).

⁹A gap in first choice access persists after 2008, but it shrinks when we control for differences in number of preferences reported by parents in IA and DA local authorities.

¹⁰In Chen, Jiang and Kesten (2020), ten million high school seniors compete for seven million seats in Chinese universities. 74% of students were assigned to their top-ranked choice under the IA mechanism. In contrast, only 31% of the schools were oversubscribed in England in 2006 and 93% of students were assigned their first choice in IA local authorities.

¹¹A school value-added measures the school's contribution to a standard performance metric: earning a level 2 qualification in at least five of the General Certificate of Education (GCSE) exams including English and Mathematics. GCSE performance is part of the English school accountability system, and success is a requirement for secondary students to gain entry to sixth form, which is the final two years of secondary education.

Research shows that parents prefer schools with high-achieving peers and high-SES peers (Black, 1999; Bayer, Ferreira and McMillan, 2007; Hastings and Weinstein, 2008; Burgess et al., 2015; Abdulkadiroğlu et al., 2020). We again find that the IA ban affected low-SES students more negatively than high-SES students: due to the ban, low-SES students became 1.6 pp more likely to have low-SES peers and peers with 0.03 standard deviations (SD) lower baseline test scores compared to high-SES students.¹² This detrimental effect suggests that the benefit that low-SES parents obtain from lower competition for top schools under IA offsets the cost of not receiving their second or third choices, an effect previously observed by Agarwal and Somaini (2018) in Cambridge MA.

To further explore the *competition-for-top-schools* effect, we show that the effect on low-SES students is partly driven by a reduction in their admission chances at selective schools. These schools admit pupils using admissions tests and are some of the most sought-after English schools.¹³ We consider the sample of competitive local authorities, and find that the effect of the IA ban is significantly larger in these local authorities. The negative effects for low-SES students on schools' value-added move from -0.8 pp to -1.3 pp in competitive local authorities. Similarly, the negative effects on peers' test scores moves from -0.030 SD to -0.071 SD, the effect on the share of low-SES peers moves from $+1.6$ pp to $+3.1$ pp, and the effect on access to selective schools moves from -1.1 pp to -2.5 pp. The level of competition for students' top schools amplifies the effect of the IA ban. Finally, the move from IA to DA did not lead to an increase in the achievement gap between high- and low-SES students. This finding partly stems from low-SES students benefiting less from attending high-value-added schools than high-SES students.

So far, we have examined the impact of replacing IA with DA in scenarios where all schools have to use either IA or DA. We find that low-SES students have higher access to high-VA and selective schools thanks to some high-SES parents strategically skipping these schools. These results raise a natural question: would this *competition-for-top-schools* also happen in environments in which each school is free to adopt a manipulable admission criterion that gives parents a higher priority for their top-ranked school (often called *First Preference First* criterion)? Environments in which schools or universities set their admission criteria are common, and free choice of admission criteria opens the door to strategic behaviors, such as 'early decision' policies in college admissions, which are similar to First Preference First as colleges prioritize applicants who commit to accepting offers.

To study the potential effect of schools adoption of manipulable admission criteria, our school-level analysis takes advantage of a special feature of the English system: In addition to the 65 local authorities that used DA and IA, there were also "mixed" local authorities in which some schools, but not all, were using an admissions criteria called first preference first (FPF) which

¹²We find no evidence that the IA ban increased achievement inequalities between high- and low-SES students three years after enrolling in secondary school.

¹³In selective schools students' test scores are 0.4 SD higher, the share of low-SES students is 8 pp lower, and value-added is 7.8 pp higher than non-selective schools.

gives higher priority to students who rank a school first.¹⁴ Using an FPF admissions criteria is a strategic device for schools: when faced with competition from good neighboring selective schools, the FPF criterion encourages high-SES parents, who are worried that their admission chances for neighboring selective schools are too low, to rank the FPF school as their first choice. We confirm this strategic adoption in England. In competitive local authorities, schools that are free to choose their admission criteria were significantly more likely to use the FPF admission criterion when their closest school was selective (+ 16.6 pp) and when it had higher achieving students (+ 35.2 pp). The FPF criterion was banned in 2008, which allows us to directly examine whether this ban generated a similar *competition-for-top-schools* effect. In other words, by reducing high-SES parents incentives to strategically rank a FPF school above a good selective school, did the ban reduce high-SES student enrolment in FPF schools?

We use a difference-in-differences research design that compares the changes in school enrollment before and after the 2008 ban between schools that were forced to abandon the FPF criterion and schools that used the alternative equal preference (EP) criterion during the entire period. EP schools do not modify priorities based on how the school is ranked. We find that preventing schools from using the FPF admissions criteria had a large effect on enrollment. Compared to EP schools, FPF schools became less likely to enroll high-achieving students and more likely to enroll low-achievers and low-SES students. After the ban, former FPF schools enrolled 1.5 pp fewer students from the top decile of baseline achievement, 1.4 pp more students from the bottom decile of baseline achievement, and 3.9 pp more low-SES students. This reallocation of low-SES students to FPF schools provides additional support for the *competition-for-top-schools* effect in environments in which schools are free to choose their admission criteria.

Our paper contributes to the literature on the effects of strategy-proof student assignment mechanisms. Several theoretical papers compare the welfare properties of the IA and DA mechanisms concluding that, in environments with complete information, assignments under DA are more efficient than under IA (Chen and Sönmez, 2006; Ergin and Sönmez, 2006) while the opposite can hold with imperfect information due to IA’s ability to extract information on preference intensity (Abdulkadiroğlu, Che and Yasuda, 2011; Featherstone and Niederle, 2016; Miralles, 2009; Troyan, 2012). Papers using estimates of parents’ preferences for schools and counterfactual analysis of assignments have found some support for IA in the aggregate and mixed findings across levels of sophistication (Kapor, Neilson and Zimmerman, 2020; Agarwal and Somaini, 2018; He, 2017; Calsamiglia, Fu and Güell, 2020; De Haan et al., 2023; Hwang, 2017).¹⁵ Accounting for parents’

¹⁴35% of the schools in England were free to choose their admission criteria in 2007, and 32% of these schools adopted the FPF admissions criteria.

¹⁵Agarwal and Somaini (2018) and He (2017) found that high-SES (paid-lunch) students lose more than low-SES (free-lunch) students from an IA-to-DA switch in Cambridge and Beijing respectively. Calsamiglia, Fu and Güell (2020), on the other hand, report that welfare decreases more for non-strategic parents than for strategic ones when IA is replaced by DA. He (2017) finds that sincere parents suffer an 8% increase in the home-to-school distance when IA is replaced by DA, a cost which jumps to 40% for sophisticated parents.

incorrect beliefs about admission chances leads to a reversal of the welfare results found by several papers: the IA-to-DA transition becomes welfare-improving, and welfare gains are larger for low-SES students (Kapor, Neilson and Zimmerman, 2020).

We complement this prior literature in several ways. First, in contrast to the approach based on choice models and counterfactual simulations, we examine a real-life change of mechanism, spanning more than 60 local authorities in England. Second, rather than focusing on school allocations as the main outcome, we study the effect of the IA ban on several policy-relevant outcomes following assignment, such as school value-added, peer composition, and student achievement. Examining these outcomes directly is important since revealed preference measures of allocative effects need not be related to productive dimensions of school assignment such as school value-added or peers characteristics (e.g. Abdulkadiroğlu et al., 2020; Abdulkadiroğlu, Pathak and Walters, 2018; Cullen, Jacob and Levitt, 2006).¹⁶ Furthermore, in the absence of information on student welfare, admission authorities design assignment mechanisms to achieve policy-relevant outcomes, such as fair access of all students to the highest performing schools, social diversity in schools, or overall academic performance.¹⁷ Judging how effective assignments are relative to policy makers’ objectives is therefore important. Third, our data covers the universe of students in England for ten years and allows us to document the effect of a transition from IA to DA over time. Fourth, while papers based on simulation approaches model parents’ behavior based on a number of behavioral assumptions, our reduced form approach measures the overall effect of the IA-to-DA transition, giving outcomes that combine the direct effect of the algorithm change and any changes in applicant strategies.¹⁸ Finally, variation in level of competition for schools across English local authorities allows us to examine how competitiveness mediates the effects of the IA-to-DA transition.

Our paper is most closely related to Chen, Jiang and Kesten (2020) and Song, Tomoeda and Xia (2020). All three papers provide evidence on the IA-to-DA transition based on a real-life reform.

¹⁶Improving outcomes that are important for policy makers, such as school value-added or peer composition or even academic achievement, does not necessarily translate into improvements in student welfare. This might be because parents preferences can be unrelated to school effectiveness (Abdulkadiroğlu et al., 2020; Abdulkadiroğlu, Pathak and Walters, 2018; Cullen, Jacob and Levitt, 2006) or because disadvantaged students tend to have preferences for similar peers, which implies that their welfare might increase even though their peers’ test scores decrease (Burgess et al., 2015; Hastings, Kane and Staiger, 2009; Abdulkadiroğlu et al., 2020)

¹⁷In England, the School Admissions Code of 2007 explicitly states that “ensuring equity and fair access” is a priority and it is necessary to improve the “chances of disadvantaged children getting into good schools”. Other school systems also pursue policies to promote equity and greater access for disadvantaged students. In New York City, elite specialized high schools reserve 20% of all seats for participants of the Discovery Program that helps prepare low-SES students to take the Specialized High Schools Admissions Test (SHSAT). The Chicago Public School system also has selective enrollment high schools that reserve seats based on four tiers of SES status (Ellison and Pathak, 2021).

¹⁸When switching from a manipulable to a strategy-proof mechanism, the total effect of the transition stems from two effects: (i) the mechanical effect of the algorithm change and (ii) the potential change in parents’ strategies, i.e the behavioral response. In the absence of data on parents’ reported preferences and on their true preferences before and after the change of mechanism, quantifying the behavioral response requires to model and estimate parents’ preferences, which necessitates a number of assumptions (for instance on the level of information that parents have). We do not have data on parents’ preferences. Our approach has the advantage of not relying on any behavioral assumptions, but it comes at the cost of not being able to disentangle the mechanical and behavioral channels.

Chen, Jiang and Kesten (2020) and Song, Tomoeda and Xia (2020) study college admission in China, while we consider secondary school admissions in England. This difference matters because Chinese college admissions are more competitive than secondary schools' admissions in England, and our analysis illustrates the importance of the competitive environment.¹⁹ Our paper also differs by covering more than 10 years of data (which allows us to examine pre-trends and study longer-term effects), considering a large set of outcomes (spanning access to first choice, school admissions, school value-added, and student achievement), focusing on the differential effect of the reform for high- and low-SES students, and investigating the role of the level of competition for top schools. Finally, Akbarpour et al. (2022) study the effect of the change from IA to DA in the New Haven, Connecticut in 2019. The paper sheds light on the role played by students' outside options, and shows that DA's strategy-proofness neutralizes the effect of inequality in outside options.

Our results are of general policy interest. In 2021, more than 90 countries around the world use a centralized assignment system with 40 using either immediate acceptance or deferred acceptance and many more using a similar mechanism for their secondary school admissions (CCAS Project, 2021). The main mechanism we identify suggests that, after a transition from IA to DA, high-SES parents enroll in top schools at higher rates because they no longer strategically avoid ranking these schools. The resulting competition faced by low-SES students might be amplified by the fact that selective schools in England use admission criteria (test scores) that favor sophisticated parents. Yet, selective admissions are widespread throughout education. Centralized secondary school admissions often contain some selective schools that use test scores for admissions (e.g., France, Germany, Chile, Tunisia, Finland, Hungary, New York City, Chicago)²⁰ and university admissions around the world are almost universally based on test scores and other academic criteria. Our results provide an important caution to equity rationales for DA over IA in admissions systems in which some schools are selective.

The next section describes the first preference first mechanism and discusses unequal levels of sophistication between applicants. Sections 3 and 4 provide details on the English institutional context and the data used to estimate the effect of the ban of the immediate acceptance mechanism. After outlining the research design in Section 5, we discuss the findings in Section 6, and we report robustness checks in Section 7. Section 8 turns to our school-level analysis and to investigate the role played by local competition. We conclude in Section 9.

¹⁹When there is no competition for schools—i.e. when none of the schools are oversubscribed—schools do not need to apply admission criteria, and every student will be assigned his or her favorite school, irrespective of the algorithm used.

²⁰Appendix A.1 provides a list of countries that use IA or DA for secondary school admissions and have selective secondary schools.

2 First Preference First: A Hybrid Between DA and IA

2.1 The First Preference First Mechanism

Until 2008, several local authorities in England used the first preference first (FPF) mechanism. As defined by [Pathak and Sönmez \(2013\)](#), under the FPF mechanism, a school either uses a first preference first admission criterion or the equal preference (EP) criterion. FPF schools give a higher priority to parents who rank the school higher whereas EP schools do not account for parents' rankings. More formally, the priorities of the students are defined as follows:

- (i) for each EP school, the base priorities for each student are used
- (ii) for each FPF school, the base priorities of students are adjusted so that
 - any student who ranks school s as his first choice has higher priority than any student who ranks school s as his second choice,
 - any student who ranks school s as his second choice has higher priority than any student who ranks school s as his third choice,
 - ...

Schools rank students with these priorities. Given these rankings, a matching is determined by the student-proposing deferred acceptance algorithm. Thus, the FPF mechanism is a hybrid between DA and IA. When all schools use the EP admission criterion, the allocation coincides with the DA outcome. In contrast, when all schools use the FPF admission criterion, the outcome coincides with the IA outcome. To examine the effect of the IA-to-DA transition in England, our analysis begins by considering the 49 DA local authorities in which all the schools were using the EP criterion before 2008, and the 16 IA local authorities in which all the schools were using the FPF criterion. One of the objectives of this paper is to shed light on the heterogeneous effect of banning IA on high-SES and low-SES students. To understand why replacing IA by DA might affect differentially high- and low-SES families, we present next a conceptual framework and its underlying assumptions about parents' behaviour under IA and DA.

2.2 Parent Strategic Behavior

Since IA is not strategy-proof, parents have incentives to misreport their preferences, especially when the schools they prefer are oversubscribed and their perceived priority is not high enough ([Abdulkadiroğlu and Sönmez, 2003](#)). Several papers have used lab experiments to show high levels of preference manipulation under IA ([Chen and Sönmez, 2006](#); [Pais and Pintér, 2008](#); [Calsamiglia,](#)

Haeringer and Klijn, 2011).²¹ This finding has been confirmed in various cities that use the IA mechanism, such as Barcelona (Calsamiglia and Güell, 2018), Beijing (He, 2017), Cambridge MA (Agarwal and Somaini, 2018), and New Haven (Kapor, Neilson and Zimmerman, 2020).

In England, a survey of parents’ preferences conducted two years before the ban of immediate acceptance shows preference manipulation among parents (Coldron et al., 2008). 5% of parents said that there was a school that they favoured but chose not to apply to. Another 5% of parents admitted that they did not list schools in the order they really prefer. These strategic behaviors are partly driven by the level of competition for good schools. In fact, the reason that 43% of parents chose not to apply to their favourite school was that the school was oversubscribed and their child did not meet the oversubscription criteria. Among parents who actively considered oversubscribed schools, 25% said the oversubscription criteria influenced their choice of which schools to apply to. When asked about the characteristics of the school they did not apply to, the most common answer was “Good exam results” (52%). Finding that 10% of parents openly admit strategic behavior may hide large differences between IA and DA local authorities, as well as between parents. Overall, these statistics bring support for the first assumption of our conceptual framework: Some parents strategically misreport their preferences under IA.

2.3 Heterogeneous Levels of Sophistication

Manipulable mechanisms are often criticized for being unfair because parents might not all be equally able to strategize. Parents may differ in their information about the competitiveness of various schools or may vary in their understanding of the mechanism. Pathak and Sönmez (2008) formalized these differences with a model where “sincere” parents report their preferences truthfully by ranking the schools in order of their true preferences. In contrast, “sophisticated” parents understand that truthful reporting is not optimal when competition for some schools is high and parents lose their priority in a school unless they rank it first. In that model, sincere students can prefer IA in some circumstances.²²

Growing evidence from cities using a manipulable mechanism shows that low-SES families are more likely to be sincere (Dur, Hammond and Morrill, 2018; Abdulkadiroğlu et al., 2006; Calsamiglia and Güell, 2018; Agarwal and Somaini, 2018).²³ Evidence about sincere play in England is similar

²¹Between 72% and 86% of students misreport their true preferences in Chen and Sönmez (2006), a result which has been confirmed when the students have access to more information (Pais and Pintér, 2008), and when the number of schools that can be ranked is limited (Calsamiglia, Haeringer and Klijn, 2011).

²²In particular, a sincere student can out compete another sincere students when she ranks a school higher, but has lower priority.

²³In Charlotte-Mecklenburg, Dur, Hammond and Morrill (2018) find that Asian students are significantly more likely to be sophisticated, while Black students are significantly more likely to be sincere. In New York City, many households made obvious mistakes in their schools’ applications. 80% of the students unassigned due to these mistakes received subsidized lunch. 62% were Black (Abdulkadiroğlu et al., 2006). In Barcelona, the fraction of strategic parents increases with their level of education (Calsamiglia and Güell, 2018), and in Cambridge MA free lunch students are less strategic than paid lunch students, a difference that partially reflects the lower competition

(Coldron et al., 2008). England’s low-SES families are also less likely to have information about school admissions processes. This information typically comes in the form of booklets published by local authorities. Coldron et al. (2008) reports that only 44% of parents reported having access to the booklet in 2006.²⁴ 59% of parents turned to individual secondary school prospectuses and 44% of parents used school achievement and attainment data. In 2006, parents with higher levels of education were more likely to know the admission criterion of schools to which they applied. Mothers who had an undergraduate degree or higher were three times more likely to use formal sources of information on schools’ admission criteria and oversubscription status as mothers without qualifications. In addition, parents who were homeowners were nearly twice as likely to search for data on school achievement as parents who rented. This survey evidence supports a second assumption of our conceptual framework: differing levels of sophistication between high-SES and low-SES families in England.

2.4 Sophisticated Parents’ Mistakes

The belief that strategy-proofness leads to a more equal access to schools is relatively widespread among policy makers both in the U.S. and in Europe. Yet, whether low-SES students would fare better under DA than under IA is not clear. Under perfect information, the IA mechanism gives a clear advantage to sophisticated students who always weakly prefer their IA assignment to their DA one (Pathak and Sönmez, 2008).²⁵ Imperfect information alters the welfare benefit of IA compared to DA (Kapor, Neilson and Zimmerman, 2020). Parents may not know the preferences of other parents, priorities, or tie-breaker realizations. Inaccurate beliefs about admission chances lead sophisticated parents to avoid ranking over-demanded schools, even when they could have been admitted.²⁶ High-SES families making mistakes when they misreport their preferences constitutes a third assumption of our conceptual framework. Inaccurate beliefs are particularly plausible in the English context before 2008 because the highest performing schools (selective schools) select students based on school-specific test scores, and parents did not know the results of the tests when they submitted their application list. Moreover, schools that were oversubscribed and used waiting lists had no obligation of informing parents of their child’s position on the waiting list.

they face for schools due to reserved seats (Agarwal and Somaini, 2018).

²⁴Among parents using the booklet, only 36% reported that the booklet was sent by the local authority. 46% reported that a copy was circulated by the primary school, and 11% by a secondary school.

²⁵With perfect information, parents know other parents’ preferences, schools’ priorities and potential tie-breaker rules used. This information allows parents to form accurate expectations about their admission chances in each school. Using this information, sophisticated parents optimally respond to incentives under the IA mechanism by not ranking schools in which their priority is too low to be admitted.

²⁶The chances that sophisticated parents make mistakes in their applications increase as information becomes less available to them. Although information was very limited in England under the IA system, some sophisticated parents may have been able to strategize correctly thanks to perfect information on school capacities, other parents’ preferences, and their own priorities.

2.5 Competition-for-Top-Schools vs. Trickle-Down

Sophisticated parents’ mistakes (avoiding to rank over-demanded schools even when they could have been admitted) can have two main effects, which we illustrate in Figure 1. They reduce the benefits that sophisticated parents get from IA (compared to a full information environment) and they increase the benefit for sincere parents who face less competition and gain priority at top-choice over-demanded schools. We refer to the latter effect as the *competition-for-top-schools* effect.²⁷ This beneficial effect of IA for sincere parents might be partially offset by a negative effect on their chances of being assigned their second or third choice (Pathak and Sönmez, 2008; Agarwal and Somaini, 2018). Sincere students’ lack of strategizing implies that those who fail to gain access to their top choice are also less likely to be assigned their second or third choice as they lose priority at these schools (Abdulkadiroğlu et al., 2006). We refer to this as the *trickle-down* effect.²⁸ The aggregate welfare effects for sincere students depends on whether the benefits of an increased likelihood of assignment at the top choice (competition-for-top-schools effect) outweigh the lost priority at less preferred options (trickle-down effect).

Several important features of the school choice environment can either amplify or mitigate the competition-for-top-schools effect. First, the distance-based priority structure adopted by most cities can amplify the effect (Calsamiglia and Miralles, 2016; Calsamiglia, Martínez-Mora and Miralles, 2021). When priorities are based on distance to school (as in England) or on catchment areas, any residential segregation implies that sincere (low-SES) students have high priority in relatively poor-performing schools, whereas sophisticated (high-SES) students have high priority in relatively high-performing schools that are more likely to be oversubscribed. Under IA, this higher risk of missing admission to the local “safe” school when this school is not ranked first generates larger incentives to strategize for high-SES families than for low-SES families.

In contrast, the availability of private schools can mitigate the competition-for-top-schools effect (Akbarpour et al., 2022). In the presence of outside options, under IA, sophisticated parents have weaker incentives to strategize when submitting their list, which weakens the competition-for-top-schools effect. In the extreme situation in which all high-SES sophisticated parents have an outside option and none of them strategically skip oversubscribed schools, the level of competition for top schools would be equally high under IA and DA. Low-SES students (who are more likely to lack these outside options) may no longer benefit from the competition-for-top-schools effect.

²⁷Dur, Hammond and Morrill (2018) identified this effect in Charlotte-Mecklenburg showing that sophisticated students systematically avoid over-demanded schools. Similarly, in Chicago high-scoring kids were being rejected from the city’s elite college preps because of the order in which they listed their college prep preferences (Pathak and Sönmez, 2013). In China, Song, Tomoeda and Xia (2020) report that more than 10% of students are cautious when applying to colleges under IA.

²⁸Evidence exists for the harmful effect of losing priority in second or third choice. When Boston was using the IA mechanism, nearly 20% of students listed two over-demanded schools as their top two choices, which was a clear mistake. 27% of these students were unassigned by the mechanism (Abdulkadiroğlu et al., 2006). Similarly, in Germany, high performing students who truth-tell due to a lack of understanding of the mechanism used for college admission received suboptimal placements (Braun, Dwenger and Kübler, 2010).

Other factors can affect the competition-for-top-schools effect: (i) parents’ access to information determines the accuracy of their beliefs, (ii) the level of correlation in parents’ preferences—the more parents agree on a unique ranking of schools, the more likely it is that sincere parents benefit from sophisticated parents’ strategic decision not to rank top over-demanded schools, (iii) the level of competition for top-choice schools—which determines the incentives that parents have to strategize—, (iv) the level of competition for second and third choice schools—which determines the size of the trickle-down effect. Our analysis brings empirical evidence on these effects.

3 Institutional Background

The English education system is divided into primary education (from ages 5 to 10) and secondary education (from ages 11 to 16). We provide an illustration in Figure A.1. In this paper, we focus on admissions to secondary schools in England at age 11, which corresponds to the transition between Key Stage 2 and Key Stage 3. There are 152 local authorities in England that are responsible for education policies within their jurisdiction, in particular for the assignment of students to one of the 3,963 secondary schools across the country. In 2007, England counted 3,122 public (state-funded) schools and 841 private schools (21.2%) that enroll 9% of secondary school students.²⁹

State-funded schools may be selective schools (called grammar schools, they represent 11.7% of the schools)—meaning that they use student test scores as an admission criterion—or non-selective schools (called comprehensive schools).³⁰ Comprehensive schools are further subdivided into five categories: community (60.8%), voluntary controlled (2.2%), voluntary aided (17.1%), foundation (18.1%), and academies (0.9%).

Admission authorities. We group these five categories into two subsets. The first subset consists of foundation schools, voluntary aided schools, and academies. These schools are their own admission authority, so they determine the admission criteria used and they rank applications under the chosen criteria. As illustrated in Figure 2, we call these schools *active adopters* (of the EP or FPF criterion). In contrast, community and voluntary controlled schools, which represent 63.1% of the schools in 2007, are not their own admission authority: they follow the admission criteria decided by their local authority. We call them *passive adopters* of the EP or FPF criterion.

IA and DA local authorities. As a result of schools’ freedom, in some local authorities, schools using the FPF criterion can coexist with schools using the EP criterion. In other local authorities, *all* the schools are using the EP criterion—we call these pure DA local authorities—or the FPF

²⁹Private schools are smaller than public schools, so the share of private school students is lower than the share of private schools. Our analysis will take into account the share of private schools in the local authority (measured at baseline).

³⁰77.5% of the selective schools were fully selective and 22.4% were partially selective, meaning that they only fill a portion of the class by ability.

criterion—we call these pure IA local authorities. For the rest of the paper we focus on these local authorities so for brevity we use DA local authority and IA local authority interchangeably with pure DA local authority and pure IA local authority, respectively. We define a mixed DA (respectively IA) local authority as a local authority that has chosen the EP (resp. FPF) criterion but there may be some schools using FFP (resp. EP). Thus a DA (resp. IA) local authority is a special case of a mixed DA (resp. IA) local authority in which all schools utilize EP (resp. FPF). Figure 3 shows a map of all local authorities and their type.³¹

Admission criteria. Aside from choosing the FPF admission criterion, local authorities/schools decide on a number of other admission criteria, such as a sibling criterion or whether the student is living within the catchment area of the school. Table 1 reports the frequency of each criterion for IA and DA local authorities (columns 1 and 2) and schools (columns 3 to 6). Figure A.2 in the Appendix provides a detailed description of each oversubscription criterion. Note that, in 2007, schools did not reserve seats for low-SES students in England, nor did they use admission criteria that explicitly target them. This implied that competition for schools did not directly vary by socio-economic background.

Selective schools are the only maintained secondary schools that are permitted to select students by ability. These schools admit students using a combination of admissions tests and grades/test scores from prior exams. Grammar schools are selective schools that fill the entire cohort on the basis of ability and they can leave spots unfilled if there are not enough eligible applicants. Partially selective schools fill only a portion of the class by ability. They cannot leave seats unfilled if there are not enough applicants and must admit students for any remaining seats using the standard admissions process. In the rest of the analysis, we refer to both grammar schools and partially selective schools as selective schools.

Coordinated system. The 2003 School Admissions Code led to the introduction of a coordinated admission scheme for public secondary schools. The reform introduced a single application form on which parents can rank between three and six schools, depending on the local authority, and receive a single offer from a school. Private schools are not part of the centralized admission system. Local authorities are in charge of collecting parents’ applications and schools’ priorities. They run the algorithm and send the offers to parents.³² Local authorities also determine the number of schools parents can list in the application. In 2007, most local authorities (64%) invited just 3

³¹We miss school level data for 6 local authorities that are colored white in the map in Figure 3. Four LAs (Bedfordshire, Bedford, Central Bedfordshire, and Poole) are depreciated. The remaining two (St. Helens and Cheshire) are missing due to an incompleteness in the crosswalk to produce the map but are included in the remaining analysis.

³²[Carter, Pathak and Terrier \(2020\)](#) provides additional information on the assignment process in England.

preferences, 8% invited 4 or 5 preferences, and 28% invited 6 or 7 preferences.³³ The limit on the number of preferences that parents can report is an important feature of the English system that is likely to alter the effect of the IA-to-DA transition. With truncated preference lists, DA is not strategy-proof (Haeringer and Klijn, 2009). However, it is less manipulable than the IA mechanism (Pathak and Sönmez, 2013). The expected effect of the IA-to-DA transition and the underlying mechanisms presented earlier prevail, but they might be weakened.³⁴

Ban of the FPF criterion. The FPF mechanism raised widespread concerns in England regarding its vulnerability to manipulation by parents and the strategic adoption of the FPF admission criterion by schools (see Section 8). On the parents’ side, policy makers warned against the strategic complexity of the FPF system which could harm less sophisticated parents who were not able to strategize well, as illustrated by these quotes from the chair of the London Inter-Authority Admissions Group (Carter, 2006):

“FPF forces parents to make tactical, rather than genuine preferences”

“Those who get it wrong or don’t understand, lose out”

“Parents have to identify school most likely to offer a place – often impossible”

“Parents cannot be sure whether they will meet criteria for schools they might wish to put as first preference.”

These concerns on the potential harm of the mechanism for disadvantaged parents led to the ban of the FPF admission criterion in England for admission to schools in September 2008.³⁵ From 2008 onward, all schools in England used the equal preference criterion, hence transitioning to the DA mechanism in which incentives to misreport preferences were lower.

Other changes that came with the 2007 School Admissions Code. The 2007 School Admissions Code affected other aspects of schools’ admissions arrangements. Two changes are important in our context. First, some admission criteria were banned (parental commitment and children of associated adults) while one became mandatory (children in care). Second, the new code recommended that parents who apply to selective schools (and whose children must take an entry test) are informed of the outcome of entry tests before they make their applications for other schools. Previously, parents were asked to express school preferences before they know the outcome of selective tests. Finally, the 2007 code affected other school admission policies, notably

³³All London authorities invited 6 preferences as part of the pan-London scheme. No IA local authorities offered 6 preferences, which prevents us from considering heterogenous effects of the IA ban by number of preferences.

³⁴It is easy to modify the example shown in Section 2.5 when there are constraints on how many schools can be ranked and generate the same forces.

³⁵The 2007 School Admissions Code openly refers to the “prohibition of unfair oversubscription criterion” and states that “in setting oversubscription criteria the admission authorities for all maintained schools must not give priority to children according to the order of other schools named as preferences by their parents, including ‘first preference first’ arrangements”.

by introducing “choice advice services” and free transport for low-income households to any one of the three nearest suitable schools. We discuss these other changes in Section 7 (Robustness Checks) and we rule out their confounding effects.

4 Data and Descriptive Statistics

Student-level data. We use data from the National Pupil Database (NPD), an administrative panel dataset on the census of students attending state-funded secondary schools in England between the academic years 2002-2003 and 2013-2014. In addition to information on the school attended by each student and their local authority, this dataset contains demographic information on gender, ethnicity, and free school meal eligibility. We define students who are eligible for a free school meal (FSM) as low-SES and students who do not qualify as high-SES. We link data on educational attainment at the end of KS2 (at age 11)—i.e just before students enroll in secondary school—and at the end of KS3 (at age 14)—i.e at the end of the 3rd year in secondary school. The KS2 test scores come from national standardized evaluations that all students take at the end of primary school before students move to their secondary school. We standardize KS2 test scores at the cohort level, with mean of zero and standard deviation of one. The KS3 test scores are based on teacher assessments and an externally graded written exam (before 2008). Results for each school are published in performance tables. We create indicators of whether the student scored at least a six or higher on the teacher’s assessment portion of the exams, which indicates that the student is meeting minimum academic expectations in a subject. In 2008, the KS3 dropped its externally-graded written portion and only retained the teacher’s assessment. For KS3, we therefore only use the teacher’s assessment because it is available throughout the entire sample period. Finally, we link students’ General Certificate of Secondary Education (GCSE) exam results, which are taken at the end of KS4 (at age 16). However, since GCSEs are taken five years after entry into secondary school, we do not have enough years after the reform to examine this outcome. We only use GCSEs to compute school value-added.

School and local authority level data. We complement NPD data with two sources of information on schools. First, we use the school census for academic years 2002-2003 to 2013-2014, which provides information on schools’ address, postcode, and school type. We link information on schools’ admission criteria from [Coldron et al. \(2008\)](#). This dataset contains information on each admission criterion used by schools, including criteria related to siblings, catchment area, medical or social needs, special education needs, feeder schools, or faith. Most importantly, this dataset indicates which school was using EP and FPF in 2007, the year before the FPF criterion was banned. Finally, we use local authority level data on the share of students who received their first, second, and third choices in England. This information is only available from one year before the reform.

IA and DA local authorities before the ban. Our sample contains 146 local authorities, 2,770 schools and 9,302,625 students in England between 2002-2003 and 2013-2014. Columns 3 and 4 of Table 2 report descriptive statistics for the 16 IA and 49 DA local authorities in 2007, just before the IA mechanism was banned. IA local authorities are 17 pp more likely to be in rural areas. This is partly due to the fact that all London local authorities jointly decided to use DA from the beginning (Carter, Pathak and Terrier, 2020). In line with this suburban location, the share of White students is 17 pp larger in IA local authorities, and the share of students who receive free school meals is 4 pp lower. In terms of schools’ characteristics, the share of schools that are managed by the local authority, i.e community and voluntary controlled schools, is also 14 pp larger in IA local authorities (79%) than in DA local authorities (65%).

A noticeable difference exists between DA and IA local authorities in the number of preferences they allow students to express. All IA local authorities ask students to rank three preferences, and only 45% ask for three in DA local authorities. 43% of DA local authorities let students rank six preferences. This difference matters as parents face stronger strategic incentives when the number of schools to be ranked is shorter. This motivates us to account for list length in our analysis.

Finally, in 2007, the share of private schools was 9 points lower in IA local authorities than in DA local authorities. The greater availability of outside options in DA local authorities implies weaker incentives to strategize for parents in these local authorities compared to those in IA local authorities, especially for high-income parents who can afford paying private schools tuition fees. We account for this in our empirical analysis by controlling for the share of private schools in the local authority (measured at baseline).

Overall, these descriptive statistics clearly show that EP and FPF local authorities differed in a number of ways before the 2008 reform. Local authorities and schools might have chosen to use the FPF admission criterion for reasons we do not observe. Since we compare outcomes in local authorities over time, our identification strategy adjusts for any fixed differences that may have led to these choices.

Competitive local authorities. As we discussed above, the level of competition for top-choice schools drives how much the IA ban will change students sorting across schools. To test this hypothesis, we exploit the fact that 32% of the local authorities in England contain selective schools that have more positively selected students than other non-selective schools. As explained in section 3, selective schools use students test scores as an admission criterion. We distinguish between “competitive local authorities” as the local authorities in the top quartile of local authorities by the proportion of selective secondary schools among maintained secondary schools in 2007 and “non-competitive local authorities” as the remainder.³⁶

³⁶We do not know whether a school is oversubscribed. Two local authorities that have a selective school are not classified as competitive as they have many secondary schools and have a very low share of selective schools.

This distinction is meaningful because there is a stronger vertical differentiation between schools in competitive local authorities. Students’ test scores are on average 0.4 SD higher in selective schools than in non-selective schools (Table 2). As a result, the between-school variance of students’ test scores is significantly larger in competitive local authorities than in non-competitive ones (Figure 4). Numerous papers have shown that school performance is a major factor parents consider when ranking schools.³⁷ Parents’ preferences are therefore more aligned in competitive local authorities, which results in greater levels of competition for the highest performing schools. As reported by [Coldron et al. \(2008\)](#), the percentage of oversubscribed schools is higher in the 14 most selective local authorities (median = 47%) compared with other LAs (median = 20%). Table 3 shows this fact and other descriptive statistics for competitive and non-competitive local authorities.³⁸

Our definition of competitive local authorities comes with two caveats. First, defining competitive local authorities based on the presence of a selective school implies that competitive local authorities differ not only in terms of competition for schools, but also in terms of admission criteria used by the highest performing schools, who screen students based on test scores. In our setting, the conjunction of competition and selection makes it more likely that the IA ban will benefit high-SES students. Indeed, after the IA ban, high-SES students might become more likely to apply to the preferred schools, but also to be accepted because they have higher test scores than low-SES students. The results we present in competitive local authorities are therefore particularly relevant for school choice markets in which schools (especially the preferred schools) partially screen students based on test scores. Moreover, because in areas with selective schools, parents were asked to express school preferences before they knew the outcome of selective tests, competitive local authorities were also characterized by higher levels of uncertainty in access to the highest performing schools. In the rest of the paper, we stress these two features when comparing competitive and non-competitive local authorities.³⁹

Second, a smaller number of competitive local authorities used IA before 2008. There are 16 IA local authorities and 49 DA local authorities in the full sample, but there are 3 IA and 14 DA local authorities in the sample of competitive local authorities. The conclusions we draw from this sample are therefore based on a smaller sample of IA local authorities, although we show in the next section that our identifying assumptions hold in both samples.

³⁷See [Black \(1999\)](#); [Bayer, Ferreira and McMillan \(2007\)](#); [Hastings and Weinstein \(2008\)](#); [Burgess et al. \(2015\)](#).

³⁸This definition does not divide the sample between London local authorities in the competitive group and rural local authorities in the other group. Table 3 shows that 15.2% of the schools in competitive DA local authorities are in London versus 11.3% of the schools in non-competitive DA local authorities.

³⁹Importantly, the fact that uncertainty in access to the highest performing schools goes down over time in competitive local authorities—because of the 2008 recommendation to inform parents of their child’s test score before submitting applications for selective schools—is not driving our results on the effect of the IA reform in competitive local authorities. Indeed, under DA, parents no longer need to be strategic, so uncertainty no longer drives parents’ strategies.

5 Research Design

Identification challenge. Identifying the causal effect of replacing IA with DA is challenging because local authorities that used IA differ from local authorities that used DA in a number of observable and unobservable dimensions. Local authorities could use either IA or DA before 2008, but the 2008 reform forced all IA local authorities to switch to DA. We therefore compare changes in outcomes before and after this ban between local authorities that were forced to abandon the IA mechanism (our treated group) and in local authorities that used the DA mechanism from the beginning and were unaffected by the ban (our control group).

Difference-in-differences specification (DiD). We estimate difference-in-differences regressions, where the outcome of student i in local authority l in year t (Y_{ilt}) depends on a dummy variable indicating whether the local authority is using the IA mechanism before the ban (IA_l), a dummy variable equal to one for the post-reform years ($Post_t$), and the interaction between IA and post-reform years. While the estimates from this specification document the effect of the IA ban for *all* students, irrespective of social background, we are particularly interested in the differential effect of the ban for high- and low-SES students. To estimate this heterogeneous effect (in a triple difference spirit), the specification contains a dummy variable equal to one for students qualifying for a free school meal ($LowSES_i$), and an interaction between $LowSES_i$ and $IA_l \cdot Post_t$:

$$Y_{ilt} = \mu + \alpha \cdot IA_l + \beta \cdot Post_t + \phi \cdot LowSES_i + \gamma \cdot IA_l \cdot Post_t + \eta \cdot IA_l \cdot Post_t \cdot LowSES_i + \delta \cdot X_{lt} + \varepsilon_{ilt}. \quad (1)$$

X_{lt} is a vector of LA-level control variables for the average share of each school type, the share of schools that use each admission criterion, the number of schools that students can rank on their list, and the share of private schools measured at baseline. X_{lt} also includes the following interaction terms: $Post_t \cdot LowSES_i$ and $IA_l \cdot LowSES_i$. We cluster standard errors at the local authority level.

The coefficient γ captures the change in outcome in IA local authorities compared to the change in DA local authorities for high-SES students. We are particularly interested in η . It indicates whether the change in outcome (such as school value-added) in IA local authorities compared to the change in DA local authorities was different for low-SES students than for high-SES students.

Identifying assumptions. Our identification relies on the assumption that the difference in outcome between high- and low-SES students would have evolved in the same way in DA and IA local authorities without the ban. Another important assumption is that the ban of the IA mechanism was the only change that affected IA local authorities in 2008, i.e that no other policy was adopted at the same time. We discuss and test the validity of both assumptions in Section 7.

6 Effects of Transitioning from IA to DA

We start by showing that the number of local authorities that used the IA mechanismally dropped after the Ministry for Education banned this mechanism in 2008. Figure 5 shows that more than 30% of the local authorities were using IA pre-ban, which dropped to 0% after the ban. In the next section, we start by documenting the overall effect of this transition from IA to DA, looking at student access to their reported first choice, and student test scores. We then analyse the differential effect for high- and low-SES students.

Overall effect on first choice accommodation. We first examine the share of students who are assigned the school ranked as their first choice. This outcome is only available for one year before the ban (in 2007) which prevents us from using the full history of the outcome. Moreover, we do not know whether a school ranked first is actually a student’s top choice given the incentives of IA. The results should therefore be interpreted with caution. IA is mechanically designed to maximize access to first choice, so its replacement with DA is expected to reduce first choice accommodation. Figure 6 confirms this by reporting the difference between IA and DA local authorities in the probability that a student is assigned his or her first choice.

Before the reform, IA was associated with higher parents’ access to their stated first choice (by 25 pp) compared to DA. Interestingly, that boost in admission chances to a preferred school is more pronounced in competitive local authorities (see Figure 6). In non-competitive local authorities, parents in IA local authorities are only 8 pp more likely to be assigned their first choice than in DA local authorities. These results suggest that, in environments where competition for schools is fiercer (and in which uncertainty in admission chances is larger), the type of mechanism used (IA versus DA) affects the schools parents are assigned to. IA increased parents’ access to their reported first choice, a finding consistent with the first preference prioritization the mechanism imposes.

We then look at the effect of the reform in competitive local authorities. Access to first choice dropped by 8 pp in IA local authorities, compared to DA local authorities, in the year that followed the ban of the IA mechanism. In contrast, the reform had a limited effect on first choice accommodation in non-competitive local authorities.^{40,41}

Putting our findings in perspective, England shows a high rate of first choice satisfaction in IA local authorities (93%) compared to other cities that are using the IA mechanism. This statistic is

⁴⁰Although differences in first choice accommodation shrink after the ban, a gap persists. This is because all IA local authorities limit the preference list to 3 schools (hence encouraging strategic reports which boost first choice satisfaction), whereas DA local authorities offer between 3 and 6 choices (see Table 2). Figure A.3 shows that the remaining gap in first choice access shrinks when we control for list length.

⁴¹The drop in first choice accommodation in IA local authorities could be driven by (i) students reporting their preferences more truthfully—behavioral change—or by (ii) students having lower chances of getting the school they truly prefer—mechanism change. We cannot disentangle both effects without information on parents’ preferences.

74% in Beijing (Chen, Jiang and Kesten, 2020), 84% in Cambridge (Agarwal and Somaini, 2018), and 93% in Barcelona (Calsamiglia, Fu and Güell, 2020). This suggests that overall competition for schools in England is lower than in these cities, a difference which also explains why the effect we find on first choice accommodation (8 pp drop) is on the lower end of the estimated effects found by other papers. Chen, Jiang and Kesten (2020) for instance find that the proportion of students admitted to their top choices drops by 24 pp in Beijing.

Overall effect on student test scores. Figure A.4 reports the event-study differential evolution of student KS3 test scores—measured three years after they enrol in secondary school—in IA local authorities compared to DA local authorities. Student test scores did not evolve differentially in IA and DA local authorities. This result holds both when considering all local authorities and competitive local authorities.⁴² This null effect is in line with the recent literature that has estimated the welfare effects of the IA-to-DA transition, concluding that the effect largely depends on whether parents report their preferences truthfully, and whether they have correct beliefs on their admission chances (Agarwal and Somaini, 2018; Calsamiglia, Fu and Güell, 2020; Kapor, Neilson and Zimmerman, 2020; De Haan et al., 2023). Our results complement these studies, all based on preference estimations and counterfactual analysis, by showing no real-life effect of the IA-to-DA transition on student test scores in England.

The ban of the FPF mechanism might have a limited overall effect on first choice satisfaction and on student test scores if the average effect hides a negative effect for low-SES students but a positive effect for high-SES students. This might happen if low-SES students benefit from lower competition in their preferred school under IA. We examine next heterogeneous effects by social origin.

Effect on access to a high value-added school. We start by analyzing whether low-SES students (compared to high-SES students) attend a school with a higher value-added (VA) under DA than under IA. Our VA measure captures the contribution of a school to a standard high-stakes performance metric: a student’s likelihood of obtaining level 2 qualifications in at least five GCSE exams including English and Mathematics.⁴³ Using school value-added as an outcome is partly motivated by equity considerations. Before the IA ban, low-SES students in England attended schools whose value-added was 10.4 pp lower than high-SES students. Because this difference contributes to achievement inequalities, it is important to understand if a change of mechanism increases low-SES students’ access to high value-added schools.

⁴²The corresponding DiD coefficients are equal to -0.003 in all local authorities and to -0.017 in competitive local authorities. Neither are statistically significant.

⁴³GCSE test scores are from national standardized evaluations taken at the end of secondary school. Performance on this test is reported in schools performance tables published by the Department for Education. We compute schools VA in 2007 and use this time-invariant measure as our outcome.

We measure school effectiveness using value-added regression models commonly used to measure causal effects of teachers and schools (Koedel, Mihaly and Rockoff, 2015). Appendix B details the methodology. We regress student GCSE test scores (five years after enrollment in secondary school) on KS2 test scores (taken just before secondary school), a vector of other student characteristics, a vector of time-varying school characteristics, and school fixed effects. Our value-added estimates rely on a standard selection-on-observables assumption. Recent work has shown that conventional VAM models, which control for lagged achievement, are reliable estimates of the causal effects of school attendance based on lottery estimates (Angrist et al., 2020).

The results reported in column (1) of Table 4 shows that the IA ban led to a decline of the value-added of the school that low-SES students attended compared to high-SES students. In IA local authorities (compared to DA ones), the ban led to a 0.8 pp drop in low-SES students’ school value-added relative to high-SES students’ school value-added.⁴⁴ As a benchmark, pre-reform in IA local authorities low-SES students enrolled in schools whose value-added was 10.4 pp lower than high-SES students. The IA ban led to a 7.7% increase of this gap. After the reform low-SES students had reduced access to high-quality schools relative to high-SES students, a first sign that competition for these schools might have increased under DA. We bring additional evidence on the competition effect in the rest of the analysis. We also run the same specification, but with a separate value-added measure for high-SES students and low-SES students at each school as an outcome. These results are similar to those from models with the common school value-added.⁴⁵ We expand on the analysis of heterogeneous VA later in this section. Although reduced access to high value-added schools is worrisome for equity reasons, it need not affect low-SES parents’ welfare if these parents do not value school effectiveness.

Effect on access to high-achieving peers. We next analyze whether low-SES students attend a school they like more under DA than under IA, i.e., a school they would rank higher in their preference list. Welfare considerations motivate looking at students’ access to a school they like. A common approach of the structural literature is to estimate parents’ preferences for schools and to compute the welfare associated with the assigned school (Kapoor, Neilson and Zimmerman, 2020; Calsamiglia, Fu and Güell, 2020; Agarwal and Somaini, 2018; De Haan et al., 2023). Having no information on parents’ submitted list, we cannot follow this route. Instead, we take advantage of the information we have on schools’ characteristics that have been shown to determine parents’ preferences, such as peer test scores, share of low-SES peers in the school, and school value-added. Several papers document that parents prefer schools with high-achieving peers and high-SES peers

⁴⁴The sum of our estimates of γ and η is -0.5 pp, which is the total effect on low-SES students. This indicates that low-SES students in formerly IA LAs after the reform on average attend schools with a lower value-added than in formerly DA LAs. However, this sum is not likely statistically significant.

⁴⁵The estimate of η moves from -0.013^{**} to -0.012^* in competitive local authorities and from -0.008^* to -0.009^* in the full sample. The estimate of γ is unchanged (within three decimal places) in both competitive local authorities and in the full sample. The stars correspond to the same levels of significance as in Table 4.

(Black, 1999; Bayer, Ferreira and McMillan, 2007; Hastings and Weinstein, 2008; Burgess et al., 2015; Abdulkadiroğlu et al., 2020).⁴⁶ Finding that low-SES students enroll in schools with better peers after the IA ban would suggest that these students are assigned to a school they like more.⁴⁷

For each student, we use as outcomes two measures of peer characteristics in the first year of secondary school: (i) peers' KS2 test scores, and (ii) the share of low-SES peers. Our results show that the IA-to-DA transition reduced peer quality more for low-SES students than for high-SES students. After the ban, in IA local authorities (compared to DA ones), the average test scores of low-SES students' peers drop by 0.03 SD compared to the test score of high-SES students' peers. At the same time, low-SES students become 1.6 pp more likely than high-SES students to have other low-SES students (in IA LAs compared to DA LAs).⁴⁸

This detrimental welfare effect suggests that the benefit that low-SES parents get from lower competition in their preferred school under IA (the *competition for top-school* effect) might be larger than the cost of not receiving their second or third choices (the *trickle-down* effect), an effect that has been observed previously in Cambridge (Agarwal and Somaini, 2018).⁴⁹ However, we should remain cautious in relating changes in peer quality to changes in student welfare. Although reductions in positive peer attributes such as baseline achievement or social background map to lower welfare for low-SES students, these changes might also be accompanied by other welfare increasing changes in school attributes which we are not able to measure.

Competition for top schools effect. To further explore the *competition-for-top-schools* and the *trickle-down* effects, we check whether the negative effect of the IA-to-DA transition for low-SES students is driven by a reduction in admission chances to selective schools and an increase in admission chances to low-performing schools. The theory suggests that low-SES students might face more competition for their preferred school under DA than IA due to sophisticated parents becoming more likely to rank these schools after the IA ban.

Based on evidence that parents prefer high-achieving peers, high-SES peers, and schools with higher test scores, selective schools in England are likely to be ranked first by parents. Selective schools have on average 0.4 SD higher student test scores, 8 pp lower share of low-SES students,

⁴⁶Studies have found that high-SES parents tend to value schools' peers and performance more than low-SES parents (e.g. Bayer, Ferreira and McMillan, 2007; Hastings and Weinstein, 2008; Deming et al., 2014; Hofflinger, Gelber and Tellez Cañas, 2020). This social gradient implies that the welfare effect of enrolling in a school with better peers would be larger for high-SES students than for low-SES students. It does not invalidate the association between peer quality and student welfare.

⁴⁷Access to good peers is also related to the equity motivation presented earlier. Table B.1 shows that more effective schools enroll more higher-ability students and fewer low-SES students, a correlation that has been observed in other environments (Abdulkadiroğlu et al., 2020).

⁴⁸Furthermore, all students in formerly IA LAs after the reform have peers with lower baseline scores and are more likely to be low-SES than in formerly DA LAs. However, the point estimate for γ (total effect for high-SES students in formerly IA LAs) for the share of low-SES students is not statistically significant.

⁴⁹In Cambridge, the probability of a student assigned to her top choice under IA is larger for naïve agents than for sophisticated agents who have identical preferences (78.4% vs. 76.2%). This comes at the cost of a significantly lower probability of assignment at the second choice (6.5% for naïfs and 12.3% for sophisticates).

and value-added that is 7.8 pp higher than non-selective schools.⁵⁰ As a result, selective schools are more likely to be oversubscribed.⁵¹ Thus, we expect the competition-for-top-schools effect to apply to selective schools.^{52,53} After the ban, in IA local authorities (compared to DA local authorities), low-SES students become 1.1 pp less likely than high-SES students to enroll in selective schools.⁵⁴

Finally, note that the results reported in the first row of Panel A in Table 4 document the effect of the IA ban for high-SES students. We find that the average test scores of high-SES students' peers dropped by 0.02 SD after the ban, and their access to selective schools dropped by 2.2 pp. This surprising result—the competition-for-top-schools effect suggests that high-SES students gain higher access to selective schools under DA, and therefore to better peers—is explained by a post-ban reduction in selective schools' capacities in IA local authorities compared to DA local authorities.⁵⁵ In other words, all students had lower access to selective schools after the ban, but low-SES students were more severely affected than high-SES students, which is in line with the competition-for-top-schools effect.

Trickle-down effect. Under IA, low-SES students who fail to gain access to their first choice might fall down their ranking when the schools they rank as their second or third choice are oversubscribed and give priority to students who rank the school as their first choice. This trickle-down effect does not happen under DA, as low-SES students who are rejected from their preferred school do not lose priority in their second or third choice to students who rank it first. DA is therefore expected to reduce how often low-SES students are assigned a school they dislike and rank low. We examine if low-SES students are less likely to enroll in a low-performing school following the ban, i.e., a school whose KS2 test score is in the bottom 25th percentile of the distribution in local authority. These schools are less likely to be ranked as a first choice by parents, which makes them good candidates to explore the trickle-down effect.

We find no sign of lower enrollment in low-performing schools. This last result is not necessarily surprising in the English context where only the most attractive schools are over-demanded. In 2006, only 31% of the schools in England were reported as oversubscribed by [Coldron et al. \(2008\)](#).

⁵⁰See Tables 2 and B.1.

⁵¹The percentage of oversubscribed schools is strikingly higher in the 14 most selective local authorities (median=47%) compared with other LAs (median=20%) ([Coldron et al., 2008](#)).

⁵²The competition-for-top-schools effect requires a common pool of high- and low-SES applicants in selective schools. Although we do not have data on the applicant pool, the number of low-SES students enrolled in selective schools shows that the competition effect can play a meaningful role. In 2007, 5.8% of low-SES students were enrolled in a selective school (2% in a partially selective school and 3.8% in a fully selective school) vs. 10.6% of high-SES students (2.9% in a partially selective school and 7.6% in a fully selective school).

⁵³Parents often require their children to study hard for the entry test of their local selective school—sometimes using tutors and preparation classes. Parents who strategically discard the local selective school under IA would most likely decide to do so before paying the preparation costs.

⁵⁴Although this effect (measured in all local authorities) is not statistically significant, we show in the next section that the effect in competitive local authorities is larger in magnitude and statistically significant.

⁵⁵While the average number of seats in selective schools increased by 38 (3.7%) in DA local authorities after the ban, they went down by 23 (−1.7%) in IA local authorities, which represents a differential evolution of 5.4%.

Low-SES students who are rejected from their preferred school under IA would not be rejected from their second or third choice when these schools are not over-demanded.⁵⁶

Our results on the competition-for-top-schools effect are conservative because of the limitation on the number of preferences that parents can rank in England (between three and six depending on the local authority). The competition effect plays its largest role when high-SES parents strategize under IA, but not under DA. In England, some parents might have kept strategizing under DA due to the list length limitation, which would tone down the competition effect.⁵⁷ In contrast, it is not clear how the constrained DA affects the trickle-down effect. By encouraging strategic parents to rank a safe school in the middle or bottom of their list, constrained DA would only amplify the trickle-down effect if the schools considered as safe by high-SES parents coincide with the schools ranked high by low-SES parents.

An amplifying effect: The level of competition for top schools. The larger the competition for schools, in particular for top-ranked schools, the more likely it is that low-SES parents benefit from high-SES parents' strategic decision not to rank their over-demanded top choice. To test this hypothesis, we check if our results differ in competitive local authorities and in non-competitive local authorities. As explained in Section 4, due to the presence of a selective school, competitive local authorities have a stronger vertical differentiation between schools, greater variance of students' test scores between schools, and greater rates of oversubscription. Panel B of Table 4 presents results for competitive local authorities, while panel A reports results for all IA and DA local authorities.

In line with our hypothesis, we find that the effect of the IA ban is significantly stronger in competitive local authorities. The negative effect of the IA ban on low-SES students' access to high-VA schools is almost twice as large in competitive local authorities than in non-competitive local authorities. In the former, the ban led to a 1.3 pp drop in low-SES students' school value-added relative to high-SES students' school value-added (in IA local authorities compared to DA ones). That drop was 0.8 pp when considering all local authorities. Similarly, the effect on peers test scores moves from -0.030 SD to -0.071 SD, the effect on share of low-SES peers moves from $+1.6$ pp to $+3.1$ pp, and the effect on access to selective schools moves from -1.1 pp to -2.5 pp. The magnitude of the total effect for low-SES students is also greater in competitive LAs than in the full sample for most outcomes.⁵⁸ These results confirm that, under a manipulable mechanism

⁵⁶The fact that second or third choices are not over-subscribed questions the motivation that high-SES parents have to strategize. If their second or third choice is not oversubscribed, ranking their preferred school first is not risky, which limits incentives to strategize. However, it is likely that high- and low-SES parents have different preferences. High-SES parents tend to value schools' performance more than low-SES parents (e.g. Bayer, Ferreira and McMillan, 2007; Hastings and Weinstein, 2008; Deming et al., 2014; Hofflinger, Gelber and Tellez Cañas, 2020), and high-performing schools are more likely to be oversubscribed.

⁵⁷Admission brochures sometimes recommend parents to choose in a way that reflects their preferences but to also consider chances of admission by including a school they like and at which they are likely to be admitted.

⁵⁸The IA ban had no effect in non-competitive local authorities. This null result is not surprising. When schools are not oversubscribed, the type of mechanism used to allocate students to schools is irrelevant.

like IA, the competition level influences how much low-SES students can gain from a manipulable mechanism, and as a result how much they lose from the transition to a less manipulable mechanism.

Effect on achievement inequalities. Finally, we look at the effect of the ban on students' test scores three years after they enter secondary school, i.e by age 13 at the end of Key Stage 3. We find a precisely estimated null effect. The ban of the IA mechanism did not lead to an increase in the achievement gap between high- and low-SES students. This result is may be surprising given that all other results point to a detrimental effect for low-SES students.

To explain this discrepancy, we show that low-SES students benefit significantly less from attending a high-value-added school than high-SES students in England. For each school, we decompose our school value-added measure into a value-added for high-SES students and a value-added for low-SES students.⁵⁹ Figure 8 shows that the low-SES students' VA distribution has a left-ward shift compared to high-SES students' VA distribution. Figure 9 further shows that this lower VA for low-SES students tends to be larger in high-VA schools than in low-VA schools, an important fact since our competition-for-top-schools effect plays through low-SES students' access to high value-added selective schools. These two combined findings suggest that, under immediate acceptance, low-SES students' access to high-VA schools might not have reduced the achievement gap as much as expected.⁶⁰

Similar evidence of heterogenous peer effects exists. When enrolling in a school with better peers, low-SES students have been shown to befriend students that are similar to them which limits the room for positive peer effects from higher-achieving peers (Carrell, Sacerdote and West, 2013). This kind of selective friendship formation may be particularly relevant in our context as students move to a new school.

Dynamic effect of the ban. We find that the transition from IA to DA has a progressive effect on the outcomes we consider. Whether we consider the effect on peers' characteristics or on school value-added, the effect of the IA ban increases over time (see Figure 7). This dynamic effect is not a threat for our identification strategy because the reform was not staggered.⁶¹ However, it raises the interesting question of the underlying dynamic channels. A likely explanation is that it takes time for strategic parents to update their behavior. In other related studies, parents learn about mechanisms and adjust their strategies over time (Hakimov and Kubler, 2021; Chen and Kesten,

⁵⁹As explained in greater details in Appendix B, we modify the standard value-added regression by interacting the school fixed effects with a low-SES binary variable, which gives us two value-added estimates for each school.

⁶⁰This finding also suggests that the FPF ban might have generated efficiency gains by sorting students towards schools where their score gains are bigger.

⁶¹Numerous papers have stressed the potential bias of difference-in-difference estimators when treatment effects are heterogenous over time (e.g. de Chaisemartin and D'Haultfœuille, 2020; Athey and Imbens, 2022; Goodman-Bacon, Forthcoming; Sun and Abraham, 2021). The bias is only a concern when treatment adoption is staggered over time, which is not the case in our setting; all treated local authorities transitioned from IA to DA in the same year.

2019; Ding and Schotter, 2019; Bo and Hakimov, 2020; Hastings, Kane and Staiger, 2009).⁶²

7 Robustness Checks

Parallel trends in outcomes. Our identification relies on the assumption that the difference in outcome between high- and low-SES students would have evolved in the same way in DA and IA local authorities, had the IA mechanism not been banned. To test this assumption, we run an event-study regression which is identical to Equation (1), except that we replace the post-reform dummy variable by a dummy for each year (excluding 2008, the reference year). Figure 7 plots the coefficients over time and provides a graphical visualization of our parallel pre-trends. To further rule out suspicions that our estimates capture pre-trends in outcomes, we show below that our results are robust to the inclusion of time trends in oversubscription criterion.

Ruling out other policy changes. An important assumption of our research design is that the ban of the IA mechanism was the only change that affected IA local authorities in 2008, i.e. that no other policy was adopted at the same time that might have had a differential effect on IA local authorities than on DA local authorities. To support this assumption, it is important to account for oversubscription criteria (others than the FPF criterion) that were affected by the 2007 school admissions code. Two criteria were banned (parental commitment and children of associated adults) and one became mandatory (children in care).⁶³ Figure A.2 provides a detailed summary of the admission criteria discussed in the 2003 and the 2007 schools' admissions code. We have information on the admission criteria used by schools in 2007, which allows us to check how frequently they were used pre-reform and how their usage differs in DA and IA local authorities.⁶⁴

Three reasons make us confident that our estimates do not capture changes in these criteria. First, the three criteria that were affected by the 2007 school admissions code were rarely in effect before the reform. Children of associated adults was used by 4% of the schools, parental commitment by 9%, and children in care by 77% of the schools, although this criterion only applies to less than 1% of the students.⁶⁵ In addition, although differences existed in 2007 between IA and DA local authorities in their probability of using these criteria, the differences were small in

⁶²Hakimov and Kubler (2021) reviews the literature on learning under DA and IA.

⁶³Parental commitment was used to give priority to parents willing to support the school's ethos in a financial manner or any other way, while children of associated adults was used to give priority to children who have associated parents such as current or former staff. From 2007 onward, children in care must be given the highest priority, while the previous school admissions code only recommended to give these children top priority. Children in public care are a disadvantaged group who have very low average levels of attainment, often related to frequent changes of school because their care placements change. Local authorities are legally responsible for looked after children.

⁶⁴We do not have information on oversubscription criteria for post-reform years as this information is not centrally collected by the English department of education. The 2007 data was collected for a 2008 report on policy admissions in England by Coldron et al. (2008), and afterwards generously shared with us.

⁶⁵In 2010, there were 24,900 children in public care aged 10 to 15 (i.e., about 4,150 in each age group). The same year, we had 507,620 year 7 students so children in care would represent less than 1% of all year 7 students.

magnitude compared to the 100 pp difference in the probability of using the FPF criterion.⁶⁶ To adjust for this potential confound, we systematically control for the share of schools that use each admission criterion. We show in the next section that our results are not sensitive to this set of controls and to the addition of time trends for each admission criterion.⁶⁷

We run a number of robustness checks, which we present in Figure 10 (for all IA and DA local authorities) and in Figure 11 (for competitive local authorities). Each outcome is separated by a vertical bar. The bottom of the Figure shows which regression we run, i.e., whether the regression includes (i) a set of controls for school types, (ii) a set of controls for schools' admission criteria, (iii) time-trends for schools' oversubscription criteria, and (iv) controls for the preference list size.

Ruling out the effect of parents' information on children test scores in selective schools.

Another important policy change that came with the 2007 School Admissions Code is the new recommendation that parents who apply to selective schools are informed of the outcome of their children's entry tests before they make their applications for other schools. Before 2008, parents were asked to express school preferences before they knew the outcome of selective tests. Importantly for us, the effect of the IA-to-DA transition should not differ depending on whether parents become informed of their child's performance on entrance tests (compared to a situation where parents remain uninformed). This is because once the DA mechanism replaces IA, parents no longer need to be strategic, so that uncertainty on admission chances in selective schools no longer plays a role. However, because our research design relies on difference-in-differences in which we compare changes in school allocations under IA and DA local authorities, our control group could potentially be affected by the new recommendation. After 2008, sophisticated high-SES parents in DA local authorities might face less uncertainty on their admission chances in selective schools, which could increase their applications to selective schools. To test this, we checked whether the overall composition of selective schools, especially the share of high-SES students, changed over time in DA local authorities.⁶⁸ Table A.2 shows that, in the control group of DA local authorities, enrolment in selective schools did not increase more for high-SES students than for low-SES students. This confirms that selective school intakes were not affected by the recommendation to inform parents of their child's test score before submitting applications for selective schools.⁶⁹

⁶⁶As reported in Table 1, in 2007, DA local authorities were 8.2 and 8 pp more likely to use the parental commitment and the children of associated adults criterion, but they were 2.3 pp less likely to use the children in care criterion.

⁶⁷We also tested a specification with non-linear effects for each admission criterion and a specification that controls for interaction effects between admission criteria. The results (not reported in the paper) are unaffected by these additional controls.

⁶⁸Using the sample of DA local authorities, we regressed whether a student is enrolled in a selective school on a dummy variable for low-SES students, a dummy for post-reform years, and the interaction between both.

⁶⁹The results, reported in Figures A.5 and A.6, show that our main results are not sensitive to the inclusion of control variables for the share of selective schools at the local authority level.

Ruling out the effect of the financial crisis. Although the timing of the IA ban coincided with the financial crisis, the tests we perform suggest that IA and DA local authorities were not differentially affected by the crisis. Table A.3 shows that, although the share of FSM students went up during the financial crisis, this increase did not differ in DA and IA local authorities. Our main estimates are also robust to the inclusion of control variables for the lagged real GDP growth of each local authority, a measure of how severely each local authority was affected by the financial crisis (See Figures A.5 and A.6).

Controls for list length, school type, and admission criteria. We test the robustness of our results to removing control variables for the number of schools that students can report on their preference list. Checking sensitivity to preference list size is important because IA local authorities limit the number of reported preferences to three, whereas 43% of DA local authorities let students rank six preferences (and 45% let students rank three preferences). The results are not sensitive to this control. We further show our results are not sensitive to the inclusion of control variables for the share of each school type in a local authority, and for the share of schools using each admission criterion in a local authority. We also tested a specification that includes fixed effects for each local authority. This specification does not affect the results in competitive local authorities. When considering all local authorities, two results that were previously statistically significant at 10% are no longer significant, although they keep the same sign.

Omitting London local authorities. We run our regressions on a sample that excludes students from the local authorities in London. The results, reported in Table A.4, are almost identical.

Time trends in admission criteria. Finally, a standard concern with our difference-in-differences approach is that the change in outcome we observe after the reform was already happening prior to the reform. A way to mitigate this concern is to account for existing time trends that are specific to treated/control units or to account for time trends in variables that determine the outcome. We prefer not to include local authority-specific time trends, following evidence from [Borusyak and Jaravel \(2018\)](#) that group-specific trends introduce under-identification problems.⁷⁰ We control, however, for time trends associated with each admission criterion as changes in these criteria constitutes the most likely reason for why our outcomes (access to good peers and schools) might vary

⁷⁰[Borusyak and Jaravel \(2018\)](#) show that including a group-specific trend is an inappropriate solution to nonparallel trends because the group-specific trend is collinear with the (time) distance to the treatment. Difference-in-difference specifications that include group-specific trends estimate an average of the dynamic treatment effects that severely overweighs short-run effects and weighs long-run effects negatively. This is a particular concern in our setting because the long-run effects are often larger than the short-run effects.

over time.⁷¹ Again, overall our results are very robust to the inclusion of these time trends.⁷²

8 Effect of Banning the First Preference First Admission Criteria

In the first part of the paper, we investigate what would be the effect of replacing IA by DA in environments in which all schools use IA or DA. In the second part of the paper, we analyze what the effect of replacing IA by DA would be in environments in which schools are free to decide whether they want to use the first preference first (FPF) criterion. This new environment is interesting for three reasons. First, environments in which schools or universities set their admission criteria are common, especially in higher education. Second, free choice of admission criteria opens the door to strategic behaviors, such as “early decision” policies in college admissions. Early decision is similar to FPF in that the school commits to favoring applicants who have committed to accepting its offer. The English context allows us to check whether some schools strategically adopted the FPF admission criterion to attract better students. Finally, a market in which schools can freely choose their admission criteria allows us to test whether the mechanism documented at the local authority level—low-SES students losing access to top schools when IA is replaced by DA—also applies when individual schools are prevented from strategically adopting the FPF admission criterion.

8.1 Schools’ Strategic Adoption of the FPF Admission Criterion

Schools’ strategies and incentives. We turn to a unique feature of the English system: In addition to the 65 local authorities that used DA and IA, there were also “mixed” local authorities in which some schools, but not all, were using an admissions criteria called first preference first (FPF) which gives higher priority to students who rank a school first. 35% of the schools in 2007 were free to choose their admission criteria. We call them “active adopters.” Taking advantage of this freedom, in 2007, 32% of the active schools used the first preference first admission criterion which encourages parents to act strategically. Crucially, schools faced strong strategic incentives to use the FPF criterion, and the incentives differed across schools.

Selective schools whose objective was to admit the highest achieving students using test scores had little incentives to adopt the FPF criterion. FPF could only reduce the achievement levels of incoming students by giving priority to first choice (potentially low achieving) students over second choice (potentially higher achieving) students. This is illustrated by Graham Carter’s (Chair of the

⁷¹For each oversubscription criterion we create an indicator of whether the proportion of schools that use this criterion in a local authority is above the median among all local authorities. Then we interact this term with a continuous measure of time to generate the time trends.

⁷²In the sample of competitive local authorities, Figure 11 shows that one coefficient on school value-added (out of 16) and two coefficients on enrollment in selective schools (out of 16) are not significantly different from zero and have large standard errors. In both cases, the outlying coefficients correspond to specifications that do not control for school admission criteria. This is not a specification we favor for the reasons discussed in this section. All results discussed in the paper come from regressions that control for schools’ admission criteria.

London Inter-Authority Admissions Group) following statement: “*FPF [was] less likely to be agreed by admission authorities wishing to apply ability/aptitude, religious commitment to all applicants.*”

In contrast, non-selective schools that were competing with selective schools had large incentives to adopt the FPF criterion, as the latter would discourage strategic parents from applying to over-demanded selective schools, perceived as too risky when their second choice is using FPF. Again, numerous quotes from policy makers illustrate the non-selective schools’ strategic incentives:

“FPF can deter parents from applying for a selective school”, Carter (2006)

“EP risks a reduction in ability profile of non-selective schools, as parents can put a grammar [selective] school first”, Carter (2006)

“In areas like Kent or Calderdale where wholly selective grammars attract a majority of the highest attaining children, nonselective schools may wish to use the first preference first criterion so that parents who are not sure whether their children will gain a place at their preferred grammar school will be encouraged to put their preferred comprehensive as their first expressed preference. In this way the non-selective schools hope to gain a better balanced intake which evidence shows [...] would benefit all of the children in their school. Similar issues arise in non-selective areas where there are very popular and very unpopular comprehensive schools.”, Coldron et al. (2008).

“Basically, what those [FPF] schools were doing was sort of blackmailing parents, saying, ‘If you don’t put us down first, you’ll lose your place in the queue.’ I do not think that that is fair.”, House of common testimony

These quotes indicate schools’ strategic use of the FPF criterion to encourage strategic parents to rank the school as their first choice. This is consistent with evidence by Bergman and McFarlin (2018) that frictions in the choice process allows schools to influence who applies, notably because many families lack information about schools’ quality and admissions processes (DeArmond, Jochim and Lake, 2014; Hastings and Weinstein, 2008; Kapur, Neilson and Zimmerman, 2020).

Schools’ strategic play with admission criteria in England is driven by the strong incentives they have to attract and enroll high achieving students. For example, the Department for Education (DfE) publishes performance tables every year that summarise test results, student demographic characteristics, and reports from the inspection authority (called OFSTED). The information provided primarily focuses on the absolute performance of a school rather than its value-added.⁷³ A very high profile is given to these ‘league tables’ and high stakes are associated with a good or poor performance, notably because parents chose schools based on their performance on league tables

⁷³Ofsted inspectors also rate schools according to factors associated with value-added, such as the quality of teaching and management).

(Burgess et al., 2015; Hussain, 2020).⁷⁴

Our data confirms that active schools were more likely to use the FPF criterion when they were competing with good schools, especially in competitive local authorities. To show this, we use the sample of all active schools in England in 2007.⁷⁵ We regress a dummy variable indicating whether an active school uses the FPF admission criterion on the characteristics of its closest school. The results, reported in Table A.5, show that, in competitive local authorities, active schools were 16.6 percentage points more likely to use the FPF admission criterion when their closest school was selective (column 3). Active schools were also more likely to use the FPF criterion when the closest school has more high-achieving students (as measured by the share of students whose KS2 test score is above the 25th and 10th percentiles). Consistent with the quotes from policy makers, the strategic adoption of the FPF admission criterion only happens in local authorities that contain a selective school (our definition of competitive local authorities). However, the strategic FPF adoption is not entirely driven by the presence of a selective school. The results in column 4 of Table A.5 show that, even conditional on having a selective school as a neighbour, having a neighbouring school with better students (measured by the test scores of the incoming students) increases the probability that a school uses the FPF admission criterion.

Expected effect of the FPF ban. Our results show that some schools strategically adopted the FPF criterion as a defense against the local competition they faced from a good neighbouring school (often a selective school). The FPF schools were therefore not the highest performing schools in a neighbourhood; the good neighbouring schools were. In 2007, the average KS2 score of students in selective schools was 0.37 SD higher than average. It was only 0.07 SD higher in active FPF schools (see Table 2). Using the FPF criterion was a way for non-selective schools of getting an intake of students that was closer to the one of selective schools. Better intakes would come from encouraging parents to rank FPF schools as their first choice instead of the nearby selective school. These strategies from sophisticated high-SES parents should generate a similar competition-for-top-schools effect as the one we illustrated in the previous section (See Figure 1). This makes active FPF schools particularly relevant to test whether the mechanism documented at the local authority level—low-SES students losing access to top schools when IA is replaced by DA—also applies when individual schools are prevented from strategically adopting the FPF admission criterion. The aim of this section is to verify whether the reform made FPF schools worse off (first step), and to understand whether the neighbouring schools benefitted from the FPF ban (second step).

⁷⁴Hussain (2020) shows that parents' school choice and house prices react to changes in inspection ratings. A unit increase in the nearest school's rating leads to a 5 pp rise in the probability of listing that school as the first choice, and a 0.5 percent increase in prices (equivalent to around £800) of properties located near the school, an effect that jumps to 1.3 percent for top performing schools. Other papers have stressed that failing to get a good evaluation discourages principals from staying in the school (Hussain, 2009), and affects teaching practices (Hussain, 2015) and the time that parents devote to their children's academic studies (Greaves et al., 2021).

⁷⁵We exclude active schools in DA local authorities because, by definition, none of them use the FPF admission criterion. We also exclude selective schools from the regression because, as explained above, selective schools do not have incentives to use the FPF criterion.

8.2 Research Design

Difference-in-Differences. The challenge we face when analyzing the effect of the FPF ban on schools' composition is the fact that schools that adopted the FPF criterion in the first place might differ from schools that used the EP criterion. Table 2 shows that FPF schools enrolled fewer low-SES students and students with higher test scores. To address this selection, we rely on a difference-in-differences approach that compares the evolution of students' characteristics in active FPF schools (our treatment group) and in a group of schools, presented below, that used the EP criterion during the entire period (our control group). Said differently, we measure the post-reform change in the characteristics of the students who enroll in a former FPF school, using changes in EP schools' student composition to control for natural year-to-year variation in school composition. Under the assumption that, absent the ban, student characteristics would have evolved in the same way in EP and FPF schools, the double difference provides a set of estimates of the effect of the FPF ban on schools' composition.

Let school-level outcome (Y_{st}) be a function of a dummy variable indicating whether it was a school actively using FPF (FPF_s), a dummy variable equal to one for the post-reform years ($Post_t$), and the interaction between FPF and post-reform years as follows:

$$Y_{st} = \mu + \alpha \cdot FPF_s + \beta \cdot Post_t + \gamma \cdot FPF_s \cdot Post_t + \delta \cdot X_{st} + \varepsilon_{st}, \quad (2)$$

X_{st} controls for school-level characteristics including school type, and each admission criterion used by schools. The coefficient of interest γ captures the change in outcome in active FPF schools compared to the change in the control group of EP schools. In all regressions, we cluster standard errors at the local authority level. In this analysis we only consider non-selective schools since these schools are more likely to employ the FPF criterion.

Outcomes. We use five outcome variables: in each school, we compute the share of low-SES students, as well as the share whose KS2 test score is below the 10th and 25th percentiles of their cohorts' distribution, and the share of students whose KS2 test score is above the 75th and 90th percentiles. Looking at the effect of the ban on the enrollment of the very top performers is particularly important because schools' selection strategies might affect the enrollment of high-performing kids whose parents are more sophisticated.

Control group. The control group of EP schools has to be carefully chosen because there is a risk of spillover between the FPF and EP schools that are located in the same local authority. After the ban, any change in the enrollment at FPF schools should almost mechanically be compensated by the opposite change in EP schools, which means that the control group would also be affected by the reform. To avoid spillover effects between schools, we use EP schools in DA local authorities

as the control group, i.e EP schools that are in local authorities in which zero schools were using the FPF criterion before its ban. By design, these schools cannot be affected by the FPF ban.

Identifying assumptions. The key identifying assumption of our method is that student outcomes would have evolved in the same way in EP and FPF schools had the FPF admission criterion not been banned. We test that assumption in two ways. First, we test if outcome trends were parallel before the ban. Using a standard event-study specification, we regress the outcome variable on a dummy variable indicating whether a school is using the FPF admission criteria before the ban, year fixed-effects, the interaction between FPF and each year, and the set of controls included in Equation (2). Figure 12 shows that each of our five outcomes evolved very similarly in EP and FPF schools before 2008. Each Figure also reports the p-values from a formal F-test of whether the coefficients of the FPF-by-year effects are jointly equal to zero in the pre-reform years. We obtain large p-values for all outcomes, confirming parallel pre-trends. To completely rule out suspicions that our estimates capture pre-trends, we also show in Section 8.4 that our results are robust to the inclusion of time trends in oversubscription criterion. We rule out in Section 8.4 that our results are driven by contemporaneous changes or reforms that happened in (or around) 2008, such as changes in other admission criteria and the expansion of the academy sector.

8.3 Results

Effect of the FPF ban on FPF schools. Table 5 reports estimates of (2). A first result is the difference in the composition of EP and FPF schools before the first preference first criterion was banned (captured by the coefficient of the FPF variable). Active FPF schools were 1.4 pp more likely (14%) than EP schools to enroll top achieving students (i.e students whose test score is in the top 10th percentile of the KS2 scores distribution). We do not find significant differences in the composition of EP and FPF schools along the rest of the achievement distribution, a finding which is not surprising if the FPF criterion was primarily used to attract top students.

After the ban, however, active FPF schools largely lost their advantage. Their higher probability of enrolling students in the top 10th percentile dropped by 1.5 pp relative to EP schools (which represents a 14.4% relative drop). We find consistent results along the rest of the distribution: active FPF schools became 2.2 pp (−8.7%) less likely to enroll students who score in the top 25th percentile (compared to EP schools). In contrast, their relative chances of enrolling low performing students (in the bottom 10th and 25th percentile) rose by 1.4 pp (+13.3%) and 2.5 pp (+9.8%). Consistent with these changes in FPF schools’ composition in terms of student achievement, FPF schools also became 3.9 pp (+21.5%) more likely to enroll low-SES students than EP schools. The results reported in Panel B of Table 5 show that the effect of the FPF ban was equally large, if not larger, in competitive local authorities.⁷⁶

⁷⁶Figure A.7 reports event-study coefficients for competitive local authorities only.

Effect of the FPF ban on schools located near FPF schools. The large effects of the reform suggest that, under the old FPF regime, FPF schools were attracting high-SES parents by discouraging them from applying to better, yet oversubscribed, schools. The latter type of schools should be expected to benefit from the reform by enrolling more high-SES students and higher-achieving students. To test this, we look next at the effect of the FPF ban on the schools located near FPF schools, using the schools located near EP schools as the control group. In practice, for each school considered in the analysis above (active FPF and EP), we identify the two nearest schools. Then, using the difference-in-differences approach presented in Equation (2), we compare the evolution of the student characteristics in the schools located near PPF schools (new treated group) and near EP schools (new control group).⁷⁷

The results, reported in Table A.6 suggest that the schools located near FPF schools gained from the FPF ban, compared to the schools located near EP schools. Panel A reports the effect for neighboring schools in all local authorities, while Panel C reports the effect in competitive local authorities.⁷⁸ The two closest schools of active FPF schools became 3.5 percentage points less likely to enroll low-SES students (compared to the two closest schools of EP schools), and 2.4 pp less likely to enroll students who score in the bottom 25th percentile.⁷⁹ Consistent with the larger strategic adoption of the FPF criterion in competitive local authorities, we find that FPF neighbours particularly benefited from the FPF ban in competitive local authorities.

8.4 Robustness Checks

We run a number of robustness checks that are similar to the ones we ran in the previous section, when looking at the effect of IA-to-DA transition. We therefore refer the reader to that section for a detailed justification of the alternative specifications. We present the results in Figure 13.

Sample variations. In addition to the original sample (labeled as “Base Sample” in Figure 13), we run our regressions on (i) a sample that excludes students from the local authorities in London and (ii) a sample that discards academy schools.⁸⁰ With this last test, we want to check that our results are not driven by the rapid expansion of the academy sector between 2010 and 2020. Originally introduced in 2002 under the Labour Government to replace poorly performing secondary schools, academies massively expanded after the change of government in May 2010 and the Academies Act of that year (Eyles, Machin and McNally, 2017; Eyles and Machin, 2019). Almost 60% of state-funded secondary schools are academies in 2020, up from 6% in 2010.

⁷⁷ Among the nearest schools, we ignore those (14.9%) using the FPF criterion as we know that the intake of these schools worsened after the FPF ban.

⁷⁸ Figures A.8 and A.9 report the event-study coefficients.

⁷⁹ We find similar results when considering the closest school only. That school became 2 percentage points less likely to enroll low-SES students and 1.6 pp less likely to enroll students who score in the bottom 25th percentile. These results are not significant due to smaller sample size.

⁸⁰ More precisely, we discard any schools that will become an academy school at some point in the sample.

Yet, our results do not differ when we discard academy schools from our sample, a reassuring finding that might be explained by two features of academies. First, the bulk of the academy expansion took place at the very end of the period we consider. Second, in almost all cases, academies are conversions of existing schools that inherit currently enrolled pupils and existing admission criteria. Changes in admission criteria and students' composition might take time.⁸¹

Additional control variables. We also test the robustness of our results to removing control variables for school type and admission criteria. The results are not sensitive to it, nor are they sensitive to the addition of a time trend specific to each admission criterion.

9 Conclusion

A few years after the Boston school committee replaced IA with DA in 2005, English officials enacted a nationwide ban on IA. An Act of Parliament forced all local authorities to use DA from 2008 onward. We exploit this natural experiment in market organization to investigate whether a strategy-proof mechanism like DA affects access to school quality for disadvantaged pupils. A common motivation for replacing IA with DA is that unsophisticated families, who are more likely to be low-SES, may be better off under a strategy-proof mechanism because sophisticated parents' strategic advantage is nullified.

We compare the changes in outcomes for students in IA and DA local authorities in the years before and after the ban. Our results suggest that low-SES students were harmed by the IA-to-DA transition relative to high-SES students. Low-SES students attended schools with lower value-added and a greater fraction of low-SES peers and low-achieving peers. This unintended effect of DA partly stems from low-SES students losing access to selective schools. Under IA, high-SES parents did not compete for these schools as vigorously for fear of wasting a top choice, but they were free to under DA. Supporting this competition-for-top-schools effect, we further show that the detrimental effect for low-SES students is significantly larger in competitive local authorities. We also analyze schools that used the FPF admission criterion before its ban to compete with neighboring selective schools for a granular look at competition. The 2008 reform led to a large increase in the share of low-SES students in formerly FPF schools, which is a direct consequence of their displacement from selective schools, consistent with the competition-for-top-schools-effect.

Our findings represent novel evidence on the debate on the benefits and costs of strategy-proof mechanisms for school assignment. More than a dozen countries and cities—among which Belgium, Germany, Spain, Cambridge MA and Seattle—still use IA to allocate students to schools or universities. Yet, opposition to manipulable mechanisms is still widespread due to the harm they

⁸¹Finding that our results are not driven by academies is reassuring since [Eyles and Machin \(2019\)](#) show that post-conversion, academies became less likely to admit free school meal eligible pupils and more likely to admit pupils with higher KS2 scores. They mostly attribute these changes to a post-conversion change in parents' preferences.

might incur for unsophisticated families. The main mechanism we identify suggests that under IA low-SES students face lower competition for their preferred schools because sophisticated high-SES parents might strategically avoid ranking these schools. After a transition to DA, high-SES parents enroll in top schools at higher rates. The resulting competition faced by low-SES students is more likely in environments in which top schools use admission criteria like test scores that favor sophisticated parents. Our results highlight the importance of the competitive environment and fallback options for measuring effects on unsophisticated families. They also illustrate that a transition to DA by itself may not increase access for low-SES applicants when schools are selective. Additional reforms that remove selection criteria that favor advantaged students such as descreening or reserve policies for disadvantaged groups may also be necessary.

The forces that we highlight in English school admissions may also be present in other admissions systems. For example, the early admission or early decision systems used by selective U.S. universities to admit students before the regular process have been criticized for benefiting well off and well informed students ([Avery, Fairbanks and Zeckhauser, 2003](#); [Avery and Levin, 2010](#)). However, as with the elimination of FPF, a possible advantage of early admissions systems could be that disadvantaged students do not face as much competition in the general pool of applicants. Exploring these possibilities in other settings is an exciting direction for future work.

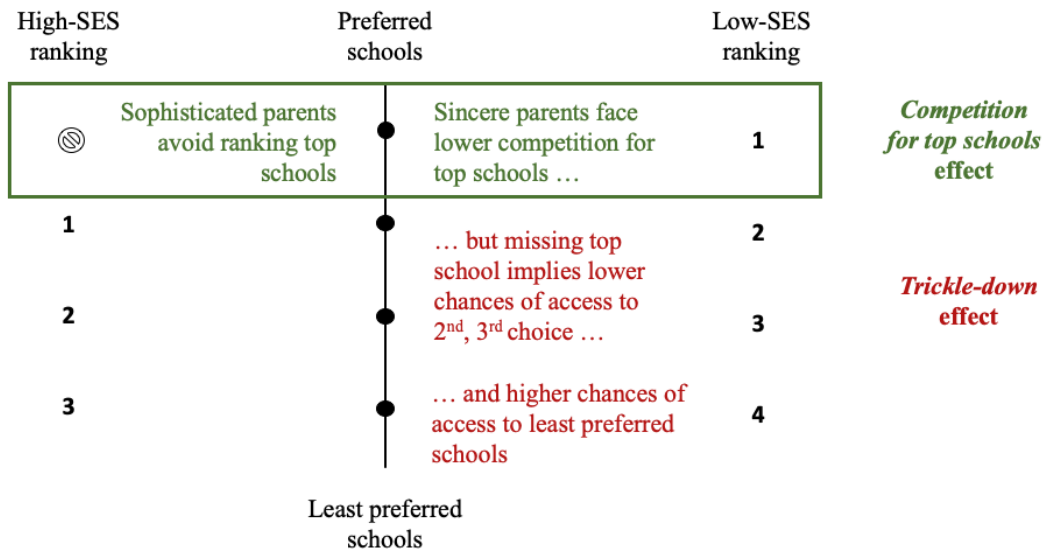


Figure 1: Illustration of the *Competition-for-Top-Schools* and *Trickle-Down* Effects

Notes: This figure illustrates the *competition-for-top-schools* and *trickle-down* effects. Inaccurate beliefs about admission chances lead sophisticated parents to avoid ranking over-demanded schools, even when they could have been admitted. Due to these mistakes sincere parents face less competition and gain priority at top-choice over-demanded schools. We refer to the latter effect as the *competition-for-top-school* effect. This beneficial effect of IA for sincere parents might be partially offset by a negative effect on their chances of being assigned their second or third choice. Sincere students' lack of strategizing implies that those who fail to gain access to their top choice are also less likely to be assigned their second or third choice as they lose priority at these schools to parents who ranked it as their first choice. We refer to this as the *trickle-down* effect.

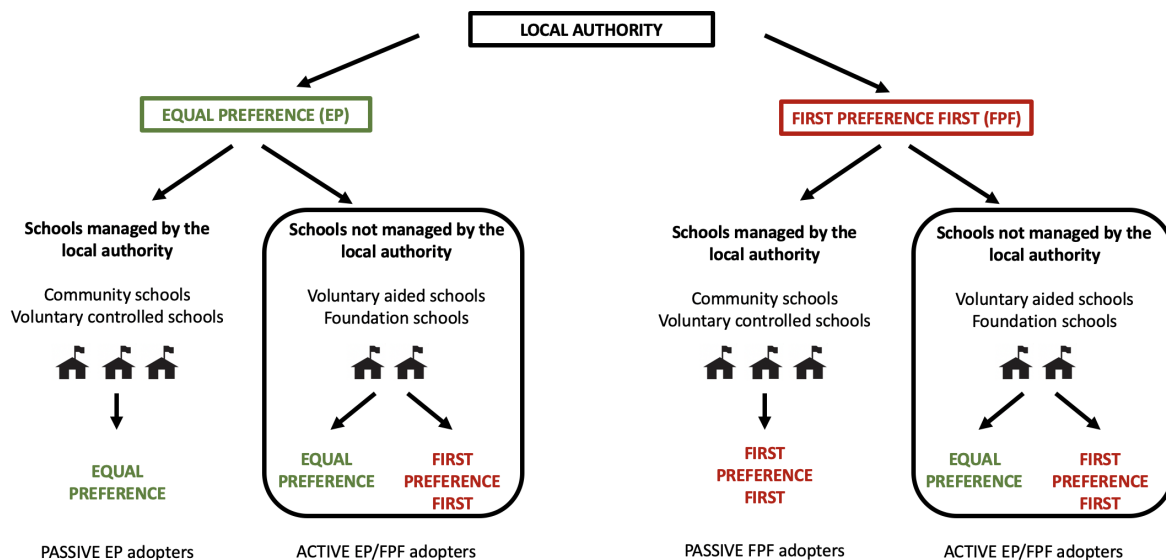


Figure 2: School-level Active and Passive Adopters of the FPF Admission Criterion

Notes: This figure illustrates the two levels of decisions on admission criteria: the local authority and the school. Three types of schools in England are their own admission authority: foundation schools, voluntary aided schools, and academies. We call these schools “active” adopters (of the EP or FPF criterion). In contrast, community and voluntary controlled schools, which represent 63.1% of the schools in 2007, are not their own admission authority: they follow the admission criteria decided by their local authority. We call them “passive” adopters of the EP or FPF criterion.

Table 1: Oversubscription Criteria Used Before the FPF Ban

	Local		Schools					
	Authorities		All Schools			Active Schools		
	IA	DA	FPF	EP	Selective	FPF	EP	Selective
	(1)	(2)	(3)	(4)	(5)	(6)	(7)	(8)
Panel A. Criteria That Changed								
First Preference First (FPF)	1.000	0.000	1.000	0.000	0.219	1.000	0.000	0.119
Parental Commitment	0.048	0.130	0.073	0.105	0.031	0.193	0.192	0.044
Children of Associated Adults	0.004	0.084	0.016	0.049	0.034	0.046	0.068	0.050
Children in Care	0.785	0.808	0.838	0.736	0.741	0.643	0.566	0.566
Panel B. Other Unaffected Criteria								
Siblings	0.930	0.911	0.913	0.929	0.809	0.807	0.820	0.654
Catchment Area and Proximity	0.952	0.911	0.904	0.919	0.852	0.750	0.792	0.742
Medical/Social Needs	0.684	0.569	0.535	0.502	0.444	0.357	0.381	0.245
Special Educational Needs	0.754	0.598	0.538	0.534	0.312	0.296	0.276	0.220
Feeder Schools	0.544	0.231	0.276	0.366	0.077	0.357	0.373	0.088
Faith	0.096	0.147	0.164	0.165	0.062	0.500	0.470	0.126
Other	0.096	0.058	0.072	0.075	0.052	0.050	0.065	0.057
Number of Schools	228	845	858	1659	324	280	557	159

Notes: This table reports how frequently each admission criterion is used by IA and DA local authorities (columns 1 and 2), by FPF and EP schools (columns 3 and 4), and by active FPF and EP schools (columns 6 and 7). Columns 3, 4, 6, and 7 do not contain selective schools. Panel A reports statistics for the criteria that were affected by the 2007 Admission Code, while Panel B reports statistics for those that were not affected by the new code. Appendix A.2 provides a detailed description of each oversubscription criterion.

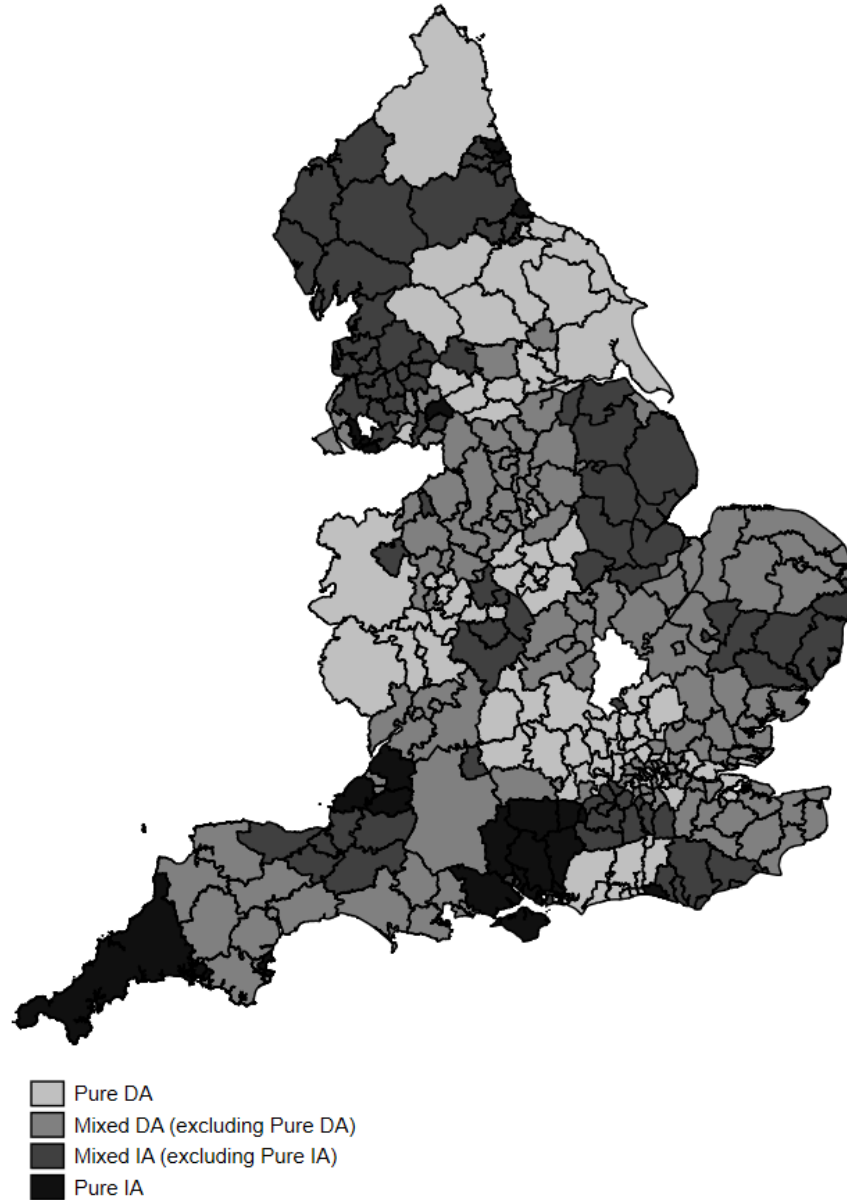


Figure 3: IA and DA Local Education Authorities in England in 2007

Notes: This map shows the location of deferred acceptance (DA) and immediate acceptance (IA) local authorities in England. 46 local authorities (31.5%) use the IA criterion for the schools they control, and 100 use the DA criterion. Some schools are their own admission authority and do not have to follow the criteria guidelines of their local authority. As a result, schools using the FPF criterion can coexist with schools using the EP criterion within each local authority. We call local authorities in which all schools use the EP (or FPF) criterion “pure DA” and “pure IA”. Throughout the paper we drop the word “pure” for brevity. We call “mixed DA” (resp “mixed IA”) the local authorities in which the local authority has chosen the EP criterion (resp FPF) but there may be some schools using FPF (resp EP). As such a DA (resp. IA) local authority is a special case of a mixed DA (resp. IA) local authority in which all schools are using EP (resp. FPF).

Table 2: Descriptive Statistics on Local Authorities and Schools (in 2007)

	Local Authorities				Schools					
	Mixed IA (1)	Mixed DA (2)	IA (3)	DA (4)	All Schools			Active Schools		
					FPF (5)	EP (6)	Selective (7)	FPF (8)	EP (9)	Selective (10)
Panel A. Local Authorities Characteristics										
Three preferences	0.96	0.49	1.00	0.45	-	-	-	-	-	-
Six preferences	0.00	0.40	0.00	0.43	-	-	-	-	-	-
Fraction of selective schools	0.08	0.10	0.06	0.10	-	-	-	-	-	-
Fraction of private schools	0.18	0.24	0.16	0.25	-	-	-	-	-	-
At least one selective school	0.28	0.34	0.19	0.33	-	-	-	-	-	-
N	46	100	16	49	-	-	-	-	-	-
Panel B. School Characteristics										
Number of Students	187	185	201	181	191	187	163	192	183	155
Urban	0.42	0.56	0.45	0.62	0.46	0.56	0.45	0.51	0.54	0.55
Greater London Area	0.00	0.18	0.00	0.16	0.04	0.17	0.12	0.11	0.22	0.16
Community school	0.66	0.58	0.78	0.63	0.64	0.62	0.46	0.00	0.00	0.00
Voluntary Controlled school	0.02	0.02	0.01	0.02	0.02	0.02	0.04	0.00	0.00	0.00
Voluntary Aided school	0.17	0.17	0.11	0.17	0.18	0.17	0.15	0.55	0.51	0.31
Foundation school	0.14	0.20	0.10	0.15	0.15	0.17	0.34	0.45	0.49	0.69
Academy	0.00	0.01	0.00	0.01	0.00	0.01	0.00	0.00	0.00	0.00
N	837	1,933	228	845	787	1,659	324	261	557	159
Panel C. Student Characteristics										
Female	0.49	0.49	0.49	0.49	0.50	0.49	0.50	0.51	0.48	0.47
Free School Meal	0.15	0.17	0.14	0.18	0.15	0.18	0.10	0.12	0.15	0.07
White	0.89	0.79	0.92	0.75	0.88	0.79	0.82	0.86	0.79	0.75
White British	0.87	0.75	0.90	0.71	0.85	0.76	0.78	0.82	0.74	0.70
Special Education Needs	0.40	0.41	0.40	0.40	0.41	0.42	0.33	0.38	0.39	0.21
Distance to School (km)	1.80	1.79	1.63	1.73	1.72	1.68	2.66	2.13	2.06	3.29
KS2 Score	0.01	0.02	0.02	0.02	-0.02	-0.03	0.37	0.07	0.04	0.72
KS3 Score	0.38	0.38	0.37	0.39	0.37	0.36	0.56	0.41	0.39	0.72
N	156,133	358,180	45,831	152,699	150,523	310,866	118,215	50,142	102,040	24,654

Notes: This table reports descriptive statistics for the sample of 146 local authorities, 2,770 schools, and 461,389 students in 2007. Column 1 and 2 report statistics for mixed IA and DA local authorities, columns 3 and 4 for IA and DA local authorities in which 100% of the schools are using the EP (resp FPF) admission criterion. Columns 5 to 10 report statistics for all FPF and EP schools in columns 5 and 6 and for active FPF and EP schools in columns 8 and 9. These columns only contain non-selective schools. Columns 7 and 10 contain the statistics for selective schools.

Table 3: Comparison between Competitive and Non-Competitive Local Authorities

	High Competition		Low Competition	
	IA (1)	DA (2)	IA (3)	DA (4)
Panel A. Local Authority Characteristics				
Fraction of Selective Schools	0.308	0.354	0.000	0.003
Three Preferences	1.000	0.143	1.000	0.559
Six Preferences	-0.000	0.643	0.000	0.353
SD of School KS2	0.501	0.531	0.212	0.241
SD of School KS3	0.264	0.274	0.131	0.143
Fraction of Private Schools	0.086	0.217	0.173	0.245
Number of IA and DA LAs	3	14	13	34
Panel B. School Characteristics				
Number of Students (mean)	182	169	200	186
Urban	1.000	0.693	0.354	0.573
Greater London Area	-0.000	0.167	-0.000	0.157
Community School	0.576	0.471	0.795	0.722
Voluntary Controlled School	0.000	0.015	0.010	0.030
Voluntary Aided School	0.182	0.199	0.092	0.151
Foundation School	0.212	0.295	0.103	0.072
Academy	-0.000	0.020	-0.000	0.024
Panel C. Student Characteristics				
Female	0.493	0.492	0.488	0.489
Free School Meal	0.156	0.187	0.134	0.170
White	0.903	0.671	0.924	0.782
White British	0.868	0.626	0.905	0.745
Ever Special Education Needs	0.441	0.404	0.404	0.415
Distance to School (km)	1.537	1.847	1.669	1.662
KS2 Score	0.030	0.075	0.026	-0.014
KS3 Score	0.358	0.436	0.387	0.382

Notes: This table shows the conditional means by the competitiveness of the local authority and whether it is IA or DA. In Panel A we show the local authority level characteristics as well as student level characteristics within each local authority. In Panel B we show the school level characteristics within each Local Authority. Both Panels B and C include selective schools/students who attend selective schools in the computations.

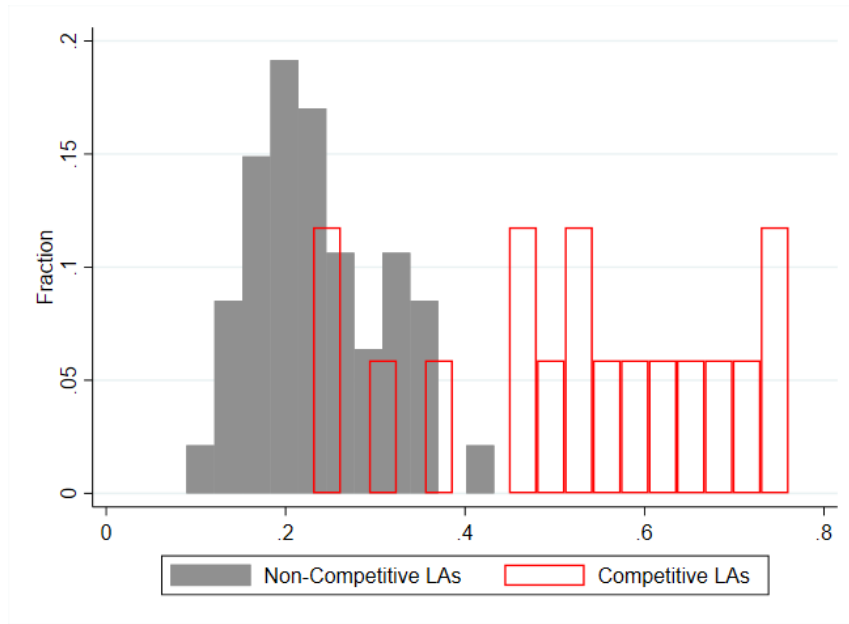


Figure 4: Distribution of Standard Deviation of School KS2 Test Scores

Notes: This figure shows the within-local authority standard deviation of the school KS2 scores. Non-competitive local authorities are denoted in gray bars and competitive local authorities are denoted in red outlined bars.

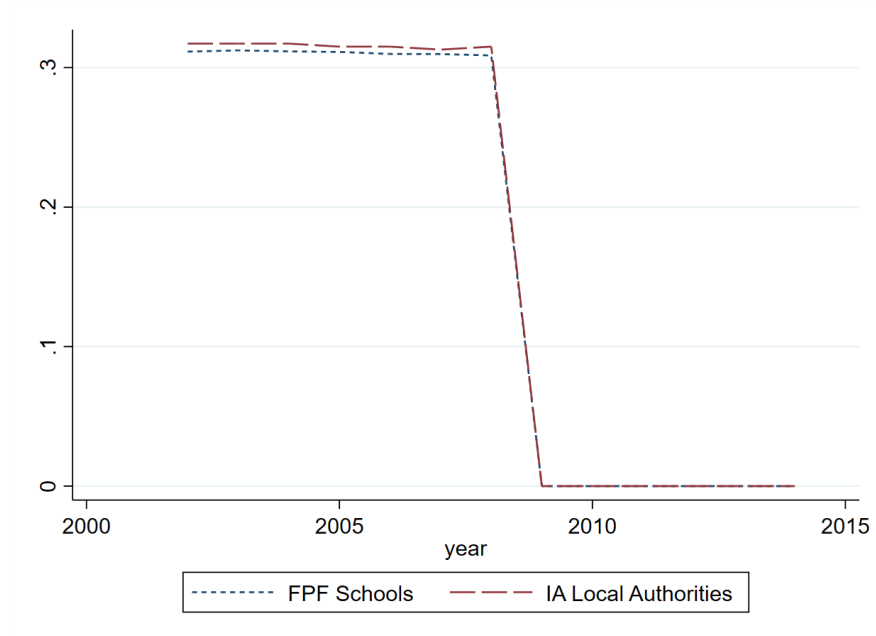


Figure 5: Effect of the FPF Ban on FPF Usage

Notes: This Figure reports the share of local authorities (dashed line) that use the IA mechanism and the share of schools (dotted line) that use the FPF admission criterion over time.



Figure 6: First Choice Accommodation

Notes: This figure reports the β_t coefficients from the following event-study regression: $y_{it} = \sum_{t \in \mathcal{T}} \beta_t IA_i \cdot T_t + X_i' \delta + \varepsilon_{it}$ where y_{it} is the proportion of students in local authority i in year t receiving their first choice, \mathcal{T} is the set of years that have first choice data from 2007 onwards, IA_i is a dummy variable that is equal to one for IA local authorities, T_t is an indicator for the year t , X_i is a vector of local authority level controls, and ε_{it} is an idiosyncratic error term. The specification shown in this figure does not include any controls. Panel (a) is the regression for competitive local authorities, which are local authorities in the top quartile of local authorities by proportion of selective schools in 2007. Non-competitive local authorities are all remaining local authorities. We show the 95% confidence interval of all coefficients. We cluster standard errors at the local authority level.

Table 4: Effect of the Transition from IA to DA on High-SES and Low-SES Students

	School Value-Added	Peers' Baseline Scores	Share of Low-SES	Attends Selective	Attends B25 School	Student KS3 Score
	(1)	(2)	(3)	(4)	(5)	(6)
Panel A. All IA and DA Local Authorities						
Post-Reform X IA LA	0.003 (0.006)	-0.024* (0.013)	0.007 (0.006)	-0.022* (0.013)	-0.010** (0.005)	-0.006 (0.012)
Post-Reform X IA LA X Low-SES	-0.008* (0.005)	-0.030** (0.012)	0.016* (0.008)	-0.011 (0.007)	0.002 (0.010)	-0.007 (0.008)
Scaled Effect (D-in-D)	.6%	-43.2%	4.4%	-17.9%	-5.3%	-1.5%
Scaled Effect (D-in-D-in-D)	-1.7%	-54.2%	10.4%	-8.6%	1.3%	-1.7%
Observations	2,149,304	2,155,130	2,155,483	2,155,483	2,149,235	1,541,279
Panel B. Competitive IA and DA Local Authorities						
Post-Reform X IA LA	0.008** (0.004)	-0.017 (0.018)	0.004 (0.007)	0.005 (0.005)	-0.013* (0.007)	-0.010 (0.042)
Post-Reform X IA LA X Low-SES	-0.013** (0.005)	-0.071*** (0.011)	0.031*** (0.010)	-0.025*** (0.007)	0.017 (0.020)	0.011 (0.020)
Scaled Effect (D-in-D)	1.6%	-12.6%	2.4%	1.5%	-6.8%	-2.3%
Scaled Effect (D-in-D-in-D)	-2.8%	-52.7%	19.9%	-7.7%	9%	2.5%
Observations	710,668	710,668	710,668	710,668	710,668	498,603

Notes: This table reports the results from Equation (1), which estimates the differential effect of the FPF ban for high- and low-SES students (in a triple difference spirit). We let a student-level outcome Y_{it} be a function of a dummy variable indicating whether the local authority is using the FPF admission criteria before the ban IA_l , a dummy variable equal to one for the post-reform years $Post_t$, a dummy variable equal to one for low-SES students $lowSES_i$, the interaction between the IA local authority indicator and post-reform indicator $IA_l \cdot Post_t$, and an interaction between that FSM variable and the $IA_l \cdot Post_t$ interaction. The control variable X_{it} includes a vector of LA-level control variables for (i) the average share of each school type (including the fraction of private schools), (ii) the share of schools that use each admission criterion, and (iii) the number of schools that students can rank on their list. The vector X_{it} also includes two additional interaction terms: $Post_t \cdot lowSES_i$ and $IA_l \cdot lowSES_i$. We cluster standard errors at the local authority level in all regressions. The outcome in column (1) is the shrunken value-added measure of the school that student i attends. The outcome in column (2) is the average KS2 score of all current year 7 students at the school student i attends. We call this the a student's peers' baseline score. The outcome in column (3) is the proportion of low-SES peers at the school student i attends. The outcome in column (4) is an indicator of whether the student attends a selective school. The outcome in column (5) is an indicator of whether a student attends a school with an average KS2 score in the bottom 25% of the local authority. Finally, the outcome in column (6) is an indicator of whether student i achieved level 6 in both their English and Mathematics KS3 assessment, which is the standard expectation. All regressions include students attending non-selective and selective schools. *** denote significance at the 1 percent level, ** significance at the 5 percent level, and * significance at the 10 percent level.

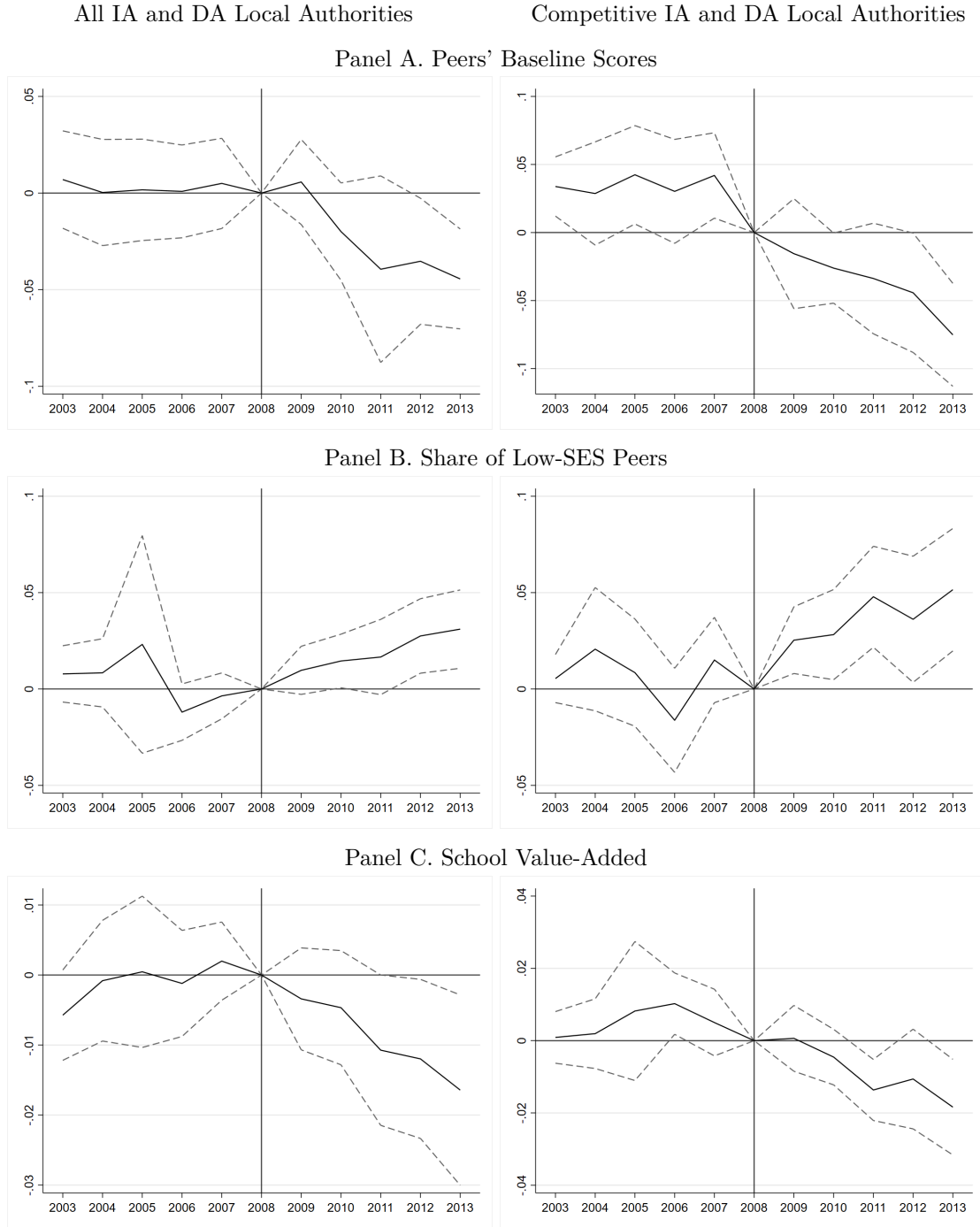


Figure 7: Event-Study - Change in Low-SES Students Peers' Characteristics

Notes: This figure provides a graphical visualization of pre-trends in outcomes by reporting coefficients (and 95% confidence intervals) from an event-study version of Equation (1) in which we replace the dummy variable equal to one for the post-reform years by a dummy for each year $Year_t$ (excluding 2008, the reference year, whose coefficient is set to zero). The coefficients we plot are the coefficient of the $IA_i \cdot Year_t \cdot FSM_i$ interaction terms which indicate whether the change in student-level outcome in IA local authorities compared to the change in outcomes in DA local authorities was more pronounced for low-SES students than for high-SES students. Each regression contains the same set of controls as Equation (1), i.e a vector of LA-level control variables for the average share of each school type (including the share of private schools), the share of schools that use each admission criterion, and the number of schools that students can rank on their list. The left column are the event studies for all IA and DA local authorities and the right column are the event studies for the competitive IA and DA local authorities, which are local authorities in the top quartile of local authorities by proportion of selective schools in 2007.

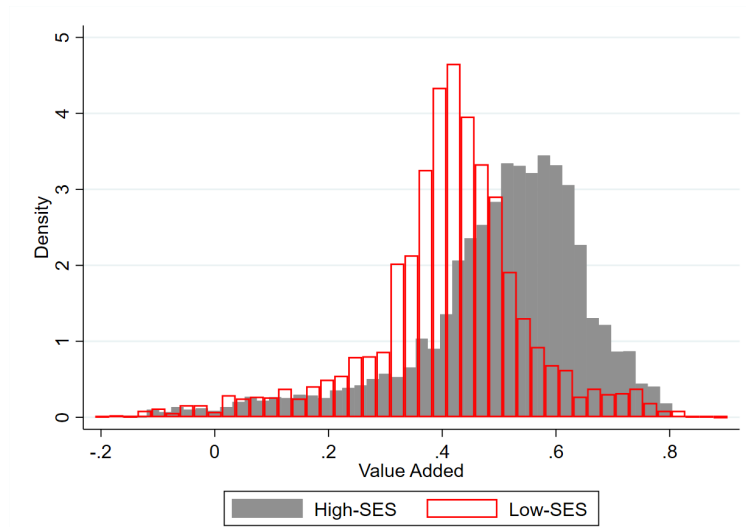


Figure 8: Heterogeneous Value-Added

Notes: This figure shows the distribution of schools' heterogeneous value-added by SES. The gray bars represent the VA distribution for high-SES students and red outlined bars represent the VA distribution for low-SES students. Appendix B provides a detailed presentation of the regression used. Our VA measure captures the contribution of a school to a standard performance metric: a student's likelihood of obtaining level 2 qualifications in at least five KS4 exams including English and Mathematics. We regress this KS4 outcome (five years after enrollment in secondary school) on KS2 test scores (taken just before enrollment in secondary school), a vector of other student characteristics, a vector of time-varying school characteristics, and a vector of school fixed effects. To measure the heterogeneous effect, we interact the vector of school fixed effects with a dummy variable equal to 1 for low-SES students and 0 for high-SES students.

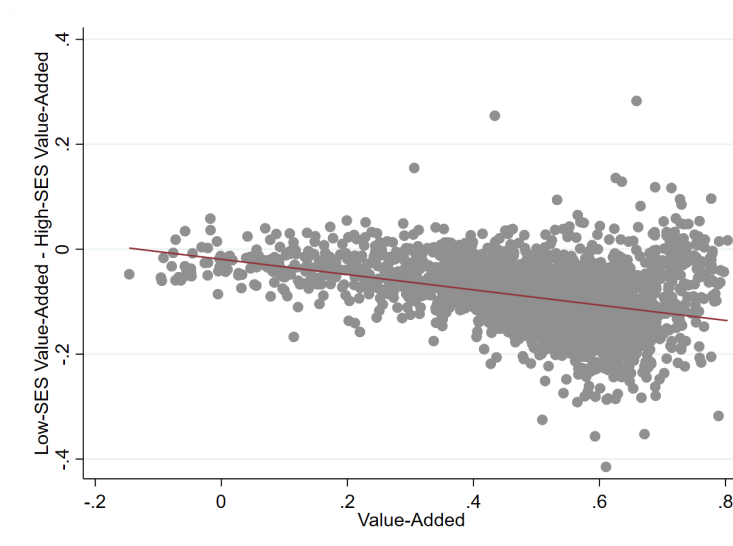


Figure 9: Difference Between Low-SES and High-SES Students' VA Along the VA Distribution

Notes: This figure shows the scatterplot and regression line of the school value-added measure on the x-axis and the difference between the low-SES and high-SES specific school value-added on the y-axis. The slope of the line of best fit is -0.146 .

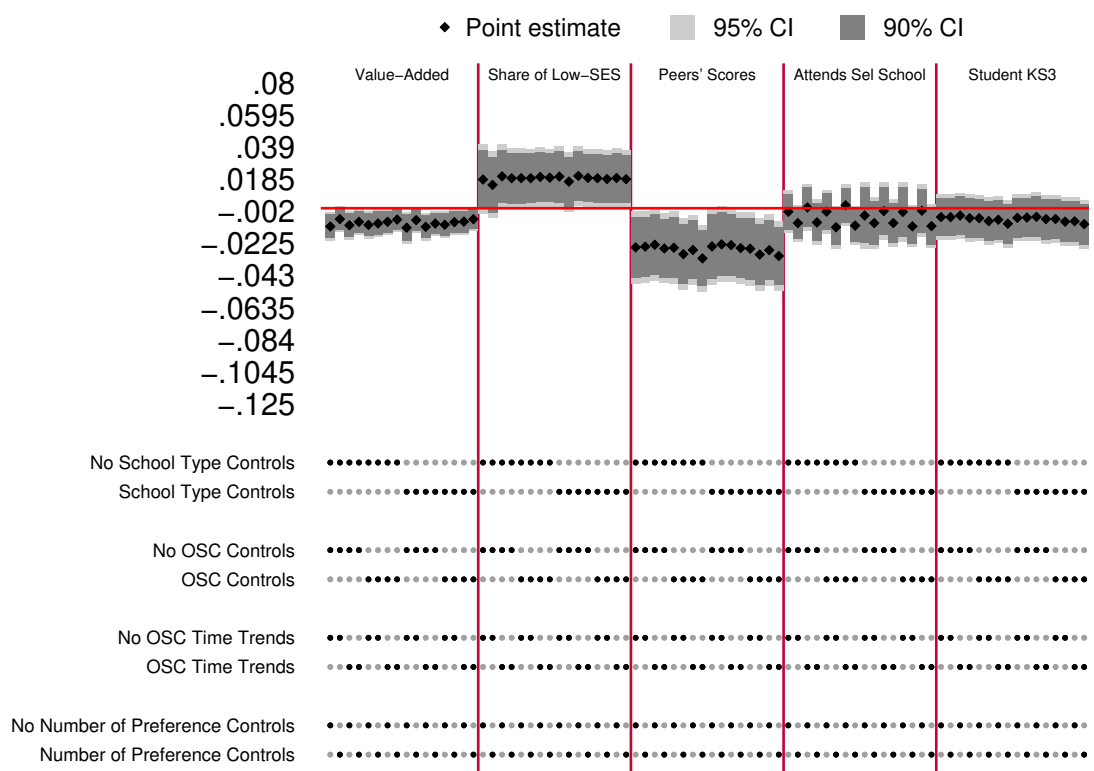


Figure 10: Robustness Checks for the Effect of the IA Ban

Notes: This figure presents robustness checks for the effect of the IA ban on the following outcomes separated by red bars: the school value-added (labelled as “Value-Added”), the share of low-SES peers (labelled as “Share of Low-SES”), peers’ baseline score (labelled as “Peers’ Scores”), probability of attending a selective school (labelled as “Attends Sel School”), and students’ KS3 score (labelled as “Student KS3”). The four panels report whether we include (i) a set of controls for the share of schools of each type in each local authority, (ii) a set of controls for the share of schools that use each admission criterion in each local authority, (iii) time-trends for the share of schools that use each admission criterion, and (iv) controls for the number of preferences the local authority permits.

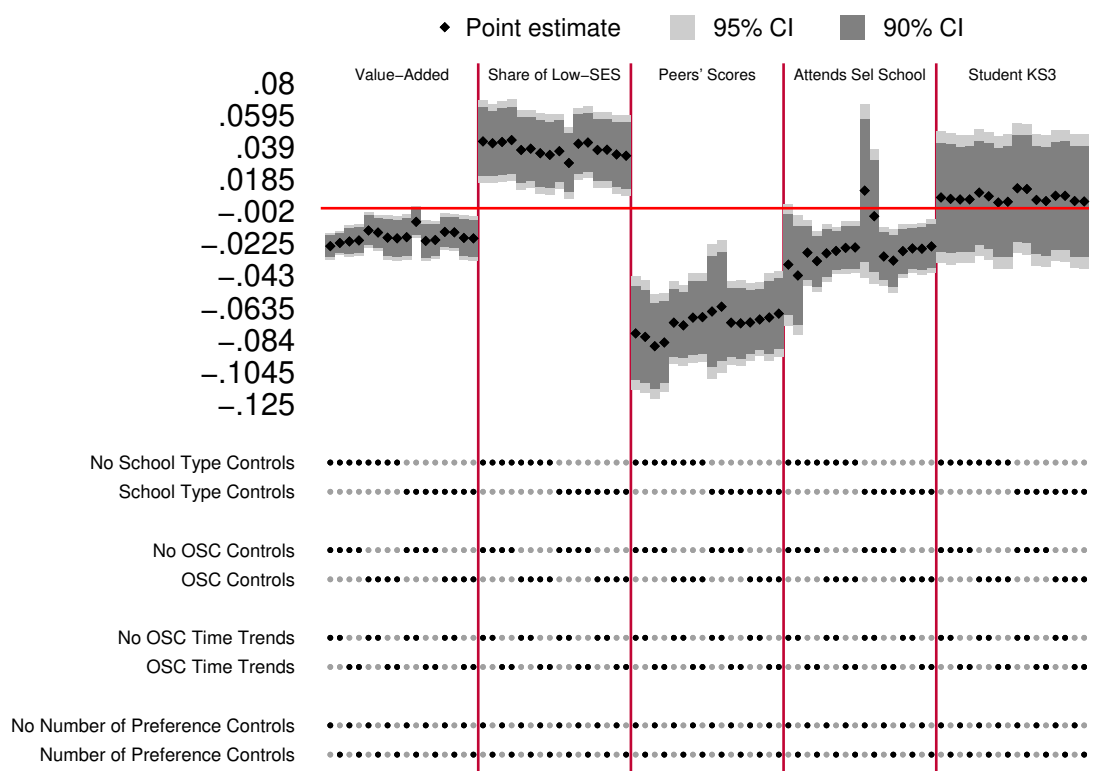


Figure 11: Robustness Checks for the Effect of the IA Ban (Competitive Local Authorities Only)

Notes: This figure presents robustness checks for the effect of the IA ban on the following outcomes separated by red bars: the school value-added (labelled as “Value-Added”), the share of low-SES peers (labelled as “Share of Low-SES”), peers’ baseline score (labelled as “Peers’ Scores”), probability of attending a selective school (labelled as “Attends Sel School”), and students’ KS3 score (labelled as “Student KS3”). The four panels report whether we include (i) a set of controls for the share of schools of each type in each local authority (including the share of private schools), (ii) a set of controls for the share of schools that use each admission criterion in each local authority, (iii) time-trends for the share of schools that use each admission criterion, and (iv) controls for the number of preferences the local authority permits. Only competitive local authorities are shown in this figure.

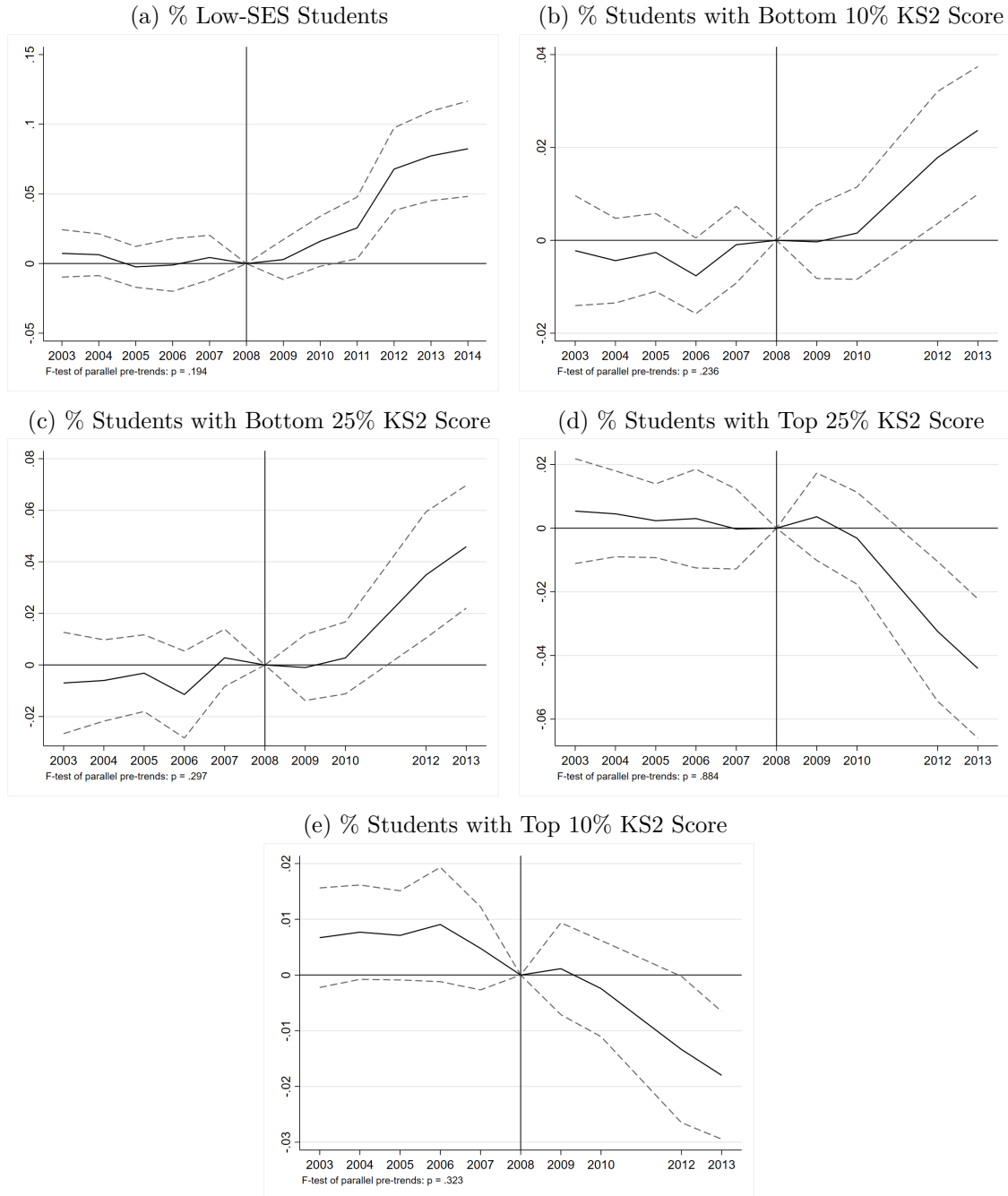


Figure 12: Event-Study Effect of the FPF Ban on FPF Schools' Composition (Relative to EP)

Notes: This figure provides a graphical visualization of pre-trends in outcomes by reporting coefficients (and 95% confidence intervals) from an event-study version of Equation (2) in which we replace the dummy variable equal to one for the post-reform years by a dummy for each year $Year_t$ (excluding 2008, the reference year, whose coefficient is set to zero). The coefficients we plot are the coefficients of the $FPF_s \cdot Year_t$ interaction terms which capture the change in outcome in FPF schools compared to the change in EP schools. Each regression contains the same set of controls as the ones in Equation (2), i.e. controls for school-level characteristics including school type, and each admission criterion used by schools. We complement each regression with a formal F-test of whether the coefficients of the FPF-by-year effects are jointly equal to zero in the pre-reform years. The p-values of the test are reported in the bottom-left side of each graph. We report results for five school-level outcome variables: the share of Free School Meal recipients, the share of students whose KS2 test score is below the 90th and 75th percentiles of their cohort distribution, and the share of students whose KS2 test score is above the 25th and 10th percentiles.

Table 5: Effect of the FPF Ban on FPF School Composition

	Low	Student Test Score Percentile			
	SES	Bottom 10	Bottom 25	Top 25	Top 10
	(1)	(2)	(3)	(4)	(5)
Panel A. All Local Authorities					
FPF X Post-Reform	0.039*** (0.010)	0.014*** (0.004)	0.025*** (0.008)	-0.022*** (0.007)	-0.015*** (0.004)
FPF	-0.026 (0.022)	-0.005 (0.007)	-0.011 (0.013)	0.020 (0.013)	0.014** (0.007)
Post-Reform	0.009 (0.006)	-0.003 (0.003)	-0.005 (0.005)	0.003 (0.004)	0.001 (0.002)
Constant	0.323*** (0.032)	0.216*** (0.014)	0.418*** (0.044)	0.096*** (0.029)	0.016 (0.016)
Scaled Effect	21.5%	13.3%	9.8%	-8.7%	-14.4%
Observations	11,024	8,574	8,574	8,574	8,574
R-squared	0.199	0.122	0.131	0.112	0.097
Panel B. Competitive Local Authorities					
FPF X Post-Reform	0.039** (0.018)	0.017* (0.009)	0.036** (0.014)	-0.030** (0.012)	-0.016** (0.006)
FPF	-0.071** (0.026)	-0.009 (0.011)	-0.019 (0.018)	0.035** (0.016)	0.025*** (0.008)
Post-Reform	0.009 (0.010)	-0.005 (0.007)	-0.007 (0.011)	0.001 (0.007)	-0.001 (0.003)
Constant	0.251*** (0.053)	0.092*** (0.015)	0.239*** (0.028)	0.248*** (0.039)	0.093*** (0.022)
Scaled Effect	21.2%	16.9%	14.6%	-10.6%	-12.4%
Observations	3,371	2,620	2,620	2,620	2,620
R-squared	0.353	0.197	0.208	0.190	0.169

Notes: This table reports DiD estimates of the effect of preventing schools from using the first preference first admission criterion. Panel A. shows the results for all local authorities and panel B. shows the results for competitive local authorities. The DiD specification we use let a school-level outcome (Y_{st}) be a function of a dummy variable indicating whether a school is using the FPF admission criteria before the ban (FPF_s), a dummy variable equal to one for the post-reform years ($Post_t$), and the interaction between FPF and post-reform years $FPF_s \cdot Post_t$. Each regression includes a set of controls for school-level characteristics including school type, and each admission criterion used by schools. We cluster standard errors at the local authority level. We use five outcome variables: in each school, we compute the share of students who receive Free School Meal (FSM) who are also classified as low-SES students, as well as the share whose KS2 test score is below the 90th and 75th percentiles of their cohort distribution, and the share of students whose KS2 test score is above the 25th and 10th percentiles. *** denote significance at the 1 percent level, ** significance at the 5 percent level, and * significance at the 10 percent level.

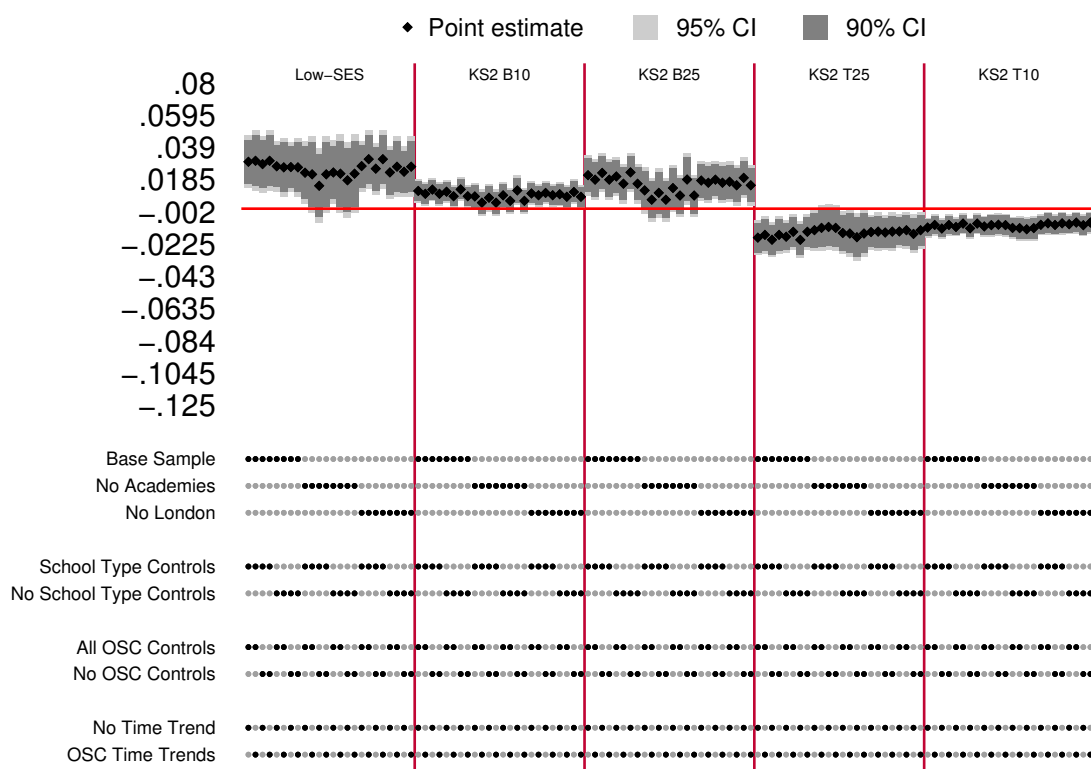


Figure 13: Robustness Checks for the Effect of the FPF Ban on FPF School Composition

Notes: This figure presents robustness checks for the effect of the FPF ban on FPF school composition. At the top of the figure we have the outcomes, which are separated by red bars, and are in order: the share of low-SES year 7 students (labelled as “Low-SES”), the share of year 7 students with a KS2 score in the bottom 10% of their cohort (labelled as “KS2 B10”), the share of year 7 students with a KS2 score in the bottom 25% of their cohort (labelled as “KS2 B25”), the share of year 7 students with a KS2 score in the top 25% of their cohort (labelled as “KS2 T25”), and the share of year 7 students with a KS2 score in the top 10% of their cohort (labelled as “KS2 T10”). Figure A.10 shows a detailed version of this Figure, outcome by outcome. The bottom part explains what sample and specification are used. The top panel reports the three samples used as alternatives to the main sample we use throughout the analysis (labelled as “Base Sample”): a sample that does not contain academy schools (labelled as “No Academies”), and a sample that excludes students from the local authorities in London (labelled as “No London”). The bottom three panels report whether we include (i) a set of controls for each school type, (ii) a set of controls for each admission criterion used by schools, and (iii) time-trends for each admission criterion.

References

- Aaronson, Daniel, Lisa Barrow, and William Sander. 2007. "Teachers and Student Achievement in the Chicago Public High Schools." *Journal of Labor Economics*, 25(1): 95–135.
- Abdulkadiroğlu, Atila, and Tayfun Sönmez. 2003. "School Choice: A Mechanism Design Approach." *American Economic Review*, 93(3): 729–747.
- Abdulkadiroğlu, Atila, Parag A. Pathak, Alvin E. Roth, and Tayfun Sönmez. 2006. "Changing the Boston School Choice Mechanism : Strategy-proofness as Equal Access." NBER Working Paper 11965.
- Abdulkadiroğlu, Atila, Parag A. Pathak, and Christopher R. Walters. 2018. "Free to Choose: Can School Choice Reduce Student Achievement?" *American Economic Journal: Applied Economics*, 10(1): 175–206.
- Abdulkadiroğlu, Atila, Parag A. Pathak, Jonathan Schellenberg, and Christopher R. Walters. 2020. "Do Parents Value School Effectiveness?" *American Economic Review*, 110(5): 1502–1539.
- Abdulkadiroğlu, Atila, Yeon Koo Che, and Yosuke Yasuda. 2011. "Resolving Conflicting Preferences in School Choice: The "Boston Mechanism" Reconsidered." *American Economic Review*, 101(1): 399–410.
- Agarwal, Nikhil, and Paulo Somaini. 2018. "Demand Analysis Using Strategic Reports: An Application to a School Choice Mechanism." *Econometrica*, 86(2): 391–444.
- Ajayi, Kehinde F. Forthcoming. "School Choice and Educational Mobility: Lessons from Secondary School Applications in Ghana." *Journal of Human Resources*.
- Akbarpour, Mohammad, Adam Kapor, Christopher Neilson, Winnie van Dijk, and Seth Zimmerman. 2022. "Centralized School choice with unequal outside options." *Journal of Public Economics*, 210: 104644.
- Angrist, Joshua, Peter Hull, Parag A. Pathak, and Christopher R. Walters. 2020. "Simple and Credible Value-Added Estimation Using Centralized School Assignment." NBER Working Paper 28241.
- Athey, Susan, and Guido W. Imbens. 2022. "Design-based analysis in Difference-In-Differences settings with staggered adoption." *Journal of Econometrics*, 226(1): 62–79.
- Avery, Christopher, and Jonathan Levin. 2010. "Early Admissions at Selective Colleges." *American Economic Review*, 100(5): 2125–2156.
- Avery, Christopher, Andrew Fairbanks, and Richard Zeckhauser. 2003. *The Early Admissions Game: Joining the Elite*. Harvard University Press.
- Basteck, Christian, Katharina Huesmann, and Heinrich Nax. 2015. "Matching Practices for Secondary Schools in Germany." Matching in Practice Country Profile 21.
- Bayer, Patrick, Fernando Ferreira, and Robert McMillan. 2007. "A Unified Framework for Measuring Preferences for Schools and Neighborhoods." *Journal of Political Economy*, 115(4): 588–638.
- Bergman, Peter, and Isaac McFarlin. 2018. "Education for All? A Nationwide Audit Study of School Choice." NBER Working Paper 25396.
- Biro, Peter. 2012. "Matching Practices for Secondary Schools in Hungary." Matching in Practice Country Profile 6.
- Black, Sandra E. 1999. "Do Better Schools Matter? Parental Valuation of Elementary Education." *Quarterly Journal of Economics*, 114(2): 577–599.
- Bo, Inacio, and Rustamdjan Hakimov. 2020. "Iterative Versus Standard Deferred Acceptance: Experimental Evidence." *The Economic Journal*, 130(626): 356–392.
- Borusyak, Kirill, and Xavier Jaravel. 2018. "Revisiting Event Study Designs." SSRN Working Paper 2826228.
- Braun, Sebastian, Nadja Dwenger, and Dorothea Kübler. 2010. "Telling the Truth May Not Pay Off: An Empirical Study of Centralized University Admissions in Germany." *B.E. Journal of Economic Analysis and Policy*, 10(1).
- Burgess, Simon, Ellen Greaves, Anna Vignoles, and Deborah Wilson. 2015. "What Parents Want: School Preferences and School Choice." *Economic Journal*, 125(587): 1262–1289.
- Calsamiglia, Caterina. 2014. "Matching Practices for Elementary and Secondary Schools in Spain." Matching in Practice Country Profile 17.
- Calsamiglia, Caterina, and Antonio Miralles. 2016. "Catchment Areas and Access to Better Schools." *Working Paper*.

- Calsamiglia, Caterina, and Maia Güell.** 2018. “Priorities in School Choice: The Case of the Boston Mechanism in Barcelona.” *Journal of Public Economics*, 163: 20–36.
- Calsamiglia, Caterina, Chao Fu, and Maia Güell.** 2020. “Structural Estimation of a Model of School Choices: The Boston Mechanism versus Its Alternatives.” *Journal of Political Economy*, 128(2): 642–680.
- Calsamiglia, Caterina, Francisco Martínez-Mora, and Antonio Miralles.** 2021. “School choice design, risk aversion and cardinal segregation.” *The Economic Journal*, 131(635): 1081–1104.
- Calsamiglia, Caterina, Guillaume Haeringer, and Flip Klijn.** 2011. “A Comment on “School Choice: An Experimental Study”.” *Journal of Economic Theory*, 146(1): 392–396.
- Carrell, Scott E., Bruce I. Sacerdote, and James E. West.** 2013. “From Natural Variation to Optimal Policy? The Importance of Endogenous Peer Group Formation.” *Econometrica*, 81(3): 855–882.
- Carter, Graham.** 2006. “The New School Admissions Code - Preference Arrangements.” *CSN conference*.
- Carter, Graham, Parag A. Pathak, and Camille Terrier.** 2020. “Matching practices for Primary and Secondary Schools - England.” *Matching in Practice Country Profile 30*.
- CCAS Project.** 2021. “CCAS Project.”
- Chandra, Amitabh, Amy Finkelstein, Adam Sacarny, and Chad Syverson.** 2016. “Health Care Exceptionalism? Performance and Allocation in the US Health Care Sector.” *American Economic Review*, 106(8): 2110–2144.
- Chen, Li.** 2012. “Matching Practices for Secondary Schools in Ireland.” *Matching in Practice Country Profile 11*.
- Chen, Yan, and Onur Kesten.** 2017. “Chinese College Admissions and School Choice Reforms: A Theoretical Analysis.” *Journal of Political Economy*, 125(1): 99–139.
- Chen, Yan, and Onur Kesten.** 2019. “Chinese College Admissions and School Choice Reforms: An Experimental Study.” *Games and Economic Behavior*, 115: 83–100.
- Chen, Yan, and Tayfun Sönmez.** 2006. “School Choice: An Experimental Study.” *Journal of Economic Theory*, 127(1): 202–231.
- Chen, Yan, Ming Jiang, and Onur Kesten.** 2020. “An Empirical Evaluation of Chinese College Admissions Reforms Through a Natural Experiment.” *Proceedings of the National Academy of Sciences*, 117(50): 31696–31705.
- Chetty, Raj, John N. Friedman, and Jonah E. Rockoff.** 2014. “Measuring the Impacts of Teachers I: Evaluating Bias in Teacher Value-Added Estimates.” *American Economic Review*, 104(9): 2593–2632.
- Coldron, John, Tanner, Emily, Finch, Steve, Shipton, Lucy, Wolstenholme, Claire, Willis, Ben, Demack, Sean, and Stiell, Bernadette.** 2008. *Secondary School Admissions*. Annesley, Nottingham: DfES Publications.
- Cullen, Julie Berry, Brian A Jacob, and Steven Levitt.** 2006. “The Effect of School Choice on Participants: Evidence from Randomized Lotteries.” *Econometrica*, 74(5): 1191–1230.
- DeArmond, Michael, Ashley Jochim, and Robin Lake.** 2014. “Making School Choice Work.” Center on Reinventing Public Education.
- de Chaisemartin, Clément, and Xavier D’Haultfœuille.** 2020. “Two-Way Fixed Effects Estimators with Heterogeneous Treatment Effects.” *American Economic Review*, 110(9): 2964–2996.
- Dee, Thomas S.** 2004. “Teachers, Race, and Student Achievement in a Randomized Experiment.” *Review of Economics and Statistics*, 86(1): 195–210.
- De Haan, Monique, Pieter A Gautier, Hessel Oosterbeek, and Bas Van der Klaauw.** 2023. “The Performance of School Assignment Mechanisms in Practice.” *Journal of Political Economy*, 131(2): 388–455.
- Deming, David J., Justine S. Hastings, Thomas J. Kane, and Douglas O. Staiger.** 2014. “School Choice, School Quality, and Postsecondary Attainment.” *American Economic Review*, 104(3): 991–1013.
- Ding, Tingting, and Andrew Schotter.** 2019. “Learning and Mechanism Design: An Experimental Test of School Matching Mechanisms with Intergenerational Advice.” *Economic Journal*, 129(623): 2779–2804.
- Dur, Umut, Robert G. Hammond, and Thayer Morrill.** 2018. “Identifying The Harm of Manipulable School-Choice Mechanisms.” *American Economic Journal: Economic Policy*, 10(1): 187–213.
- Elacqua, Gregory, Maria Luisa Iribarren, and Humberto Santos.** 2018. “Private schooling in Latin America: Trends and Public Policies.” Inter-American Development Bank Technical Note IDB-TN-01555.

- Ellison, Glenn, and Parag Pathak.** 2021. “The Efficiency of Race-Neutral Alternatives to Race-Based Affirmative Action: Evidence from Chicago’s Exam Schools.” *American Economic Review*, 111(3): 943–975.
- Ergin, Haluk, and Tayfun Sönmez.** 2006. “Games of School Choice Under the Boston Mechanism.” *Journal of Public Economics*, 90(1-2): 215–237.
- Eyles, Andrew, and Stephen Machin.** 2019. “The Introduction of Academy Schools to England’s Education.” *Journal of the European Economic Association*, 17(4): 1107–1146.
- Eyles, Andrew, Stephen Machin, and Sandra McNally.** 2017. “Unexpected School Reform: Academisation of Primary Schools in England.” *Journal of Public Economics*, 155: 108–121.
- Featherstone, Clayton R., and Muriel Niederle.** 2016. “Boston Versus Deferred Acceptance in an Interim Setting: An Experimental Investigation.” *Games and Economic Behavior*, 100: 353–375.
- Goodman-Bacon, Andrew.** Forthcoming. “Difference-in-Differences with Variation in Treatment Timing.” *Journal of Econometrics*.
- Greaves, Ellen, Iftikhar Hussain, Birgitta Rabe, and Imran Rasul.** 2021. “Parental Responses to Information About School Quality: Evidence from Linked Survey and Administrative Data.” CEPR Discussion Paper 16406.
- Haeringer, Guillaume, and Flip Klijn.** 2009. “Constrained School Choice.” *Journal of Economic Theory*, 144(5): 1921–1947.
- Hakimov, Rustamdjan, and Dorothea Kubler.** 2021. “Experiments on Centralized School Choice and College Admissions: A Survey.” *Experimental Economics*, 24(2): 434–488.
- Hastings, Justine S., and Jeffrey M. Weinstein.** 2008. “Information, School Choice, and Academic Achievement: Evidence from Two Experiments.” *Quarterly Journal of Economics*, 123(4): 1373–1414.
- Hastings, Justine S, Thomas J Kane, and Douglas O Staiger.** 2009. “Heterogeneous Preferences and the Efficacy of Public School Choice.” NBER Working Paper 12415.
- He, Yinghua.** 2017. “Gaming the Boston School Choice Mechanism in Beijing.” TSE Working Paper.
- Hiller, Victor, and Victor Hiller Tercieux.** 2013. “Matching Practices in Secondary Schools in France.” Matching in Practice Country Profile 16.
- Hofflinger, Alvaro, Denisse Gelber, and Santiago Tellez Cañas.** 2020. “School Choice and Parents’ Preferences for School Attributes in Chile.” *Economics of Education Review*, 74: 101946.
- Hussain, Iftikhar.** 2009. “Essays in Household Economics and Economics of Education.” PhD Thesis, University College London.
- Hussain, Iftikhar.** 2015. “Subjective Performance Evaluation in the Public Sector Evidence from School Inspection.” *Journal of Human Resources*, 50(1): 189–221.
- Hussain, Iftikhar.** 2020. “Housing Market and School Choice Response to School Quality Information Shocks.” Unpublished manuscript.
- Hwang, Sam Il Myoung.** 2017. “How Does Heterogeneity In Beliefs Affect Students In the Boston Mechanism?” Working Paper.
- Kane, Thomas J., and Douglas O. Staiger.** 2002. “The Promise and Pitfalls of Using Imprecise School Accountability Measures.” *Journal of Economic Perspectives*, 16(4): 91–114.
- Kane, Thomas J., Daniel F. Mccaffrey, Trey Miller, and Douglas O. Staiger.** 2013. “Have We Identified Effective Teachers? Validating Measures of Effective Teaching using Random Assignment.” Research Paper. MET Project. Bill & Melinda Gates Foundation.
- Kapor, Adam J., Christopher A. Neilson, and Seth D. Zimmerman.** 2020. “Heterogeneous beliefs and school choice mechanisms.” *American Economic Review*, 110(5): 1274–1315.
- Koedel, Cory.** 2009. “An Empirical Analysis of Teacher Spillover Effects in Secondary School.” *Economics of Education Review*, 28(6): 682–692.
- Koedel, Cory, Kata Mihaly, and Jonah E. Rockoff.** 2015. “Value-Added Modeling: A Review.” *Economics of Education Review*, 47: 180–195.
- Lufade, Margaux, and Meryam Zaiem.** 2017. “Do Elite Schools Improve Students Performance? Evidence from Tunisia.” Working Paper.
- Miralles, Antonio.** 2009. “School Choice: The Case for the Boston Mechanism.” Working Paper.
- Morris, Carl N.** 1983. “Parametric Empirical Bayes Inference: Theory and Applications.” *Journal of the American Statistical Association*, 78(381): 47–55.

- Moshoeshoe, Ramaele.** 2020. “Long-Term Effects of Free Primary Education on Educational Achievement: Evidence from Lesotho.” World Bank Working Paper, Washington, DC. Accepted: 2020-09-24T18:36:51Z.
- OECD.** 2017. “The Romanian education system.” OECD, Paris.
- Pais, Joana, and Ágnes Pintér.** 2008. “School Choice and Information: An Experimental Study on Matching Mechanisms.” *Games and Economic Behavior*, 64(1): 303–328.
- Pathak, Parag A.** 2016. “What Really Matters in Designing School Choice Mechanisms.” in *Advanced in Economics and Econometrics*, 11th World Congress of the Econometric Society, eds. Larry Samuelson, Cambridge University Press.
- Pathak, Parag A., and Tayfun Sönmez.** 2008. “Leveling the Playing Field: Sincere and Sophisticated Players in the Boston Mechanism.” *American Economic Review*, 98(4): 1636–1652.
- Pathak, Parag A., and Tayfun Sönmez.** 2013. “School admissions Reform in Chicago and England: Comparing Mechanisms by Their Vulnerability to Manipulation.” *American Economic Review*, 103(1): 80–106.
- Salonen, Mikko A.A.** 2014. “Matching Practices for Secondary Schools in Finland.” Matching in Practice Country Profile 19.
- Santos, Humberto, and Gregory Elacqua.** 2016. “Socioeconomic School Segregation in Chile: Parental Choice and a Theoretical Counterfactual Analysis.” *CEPAL Review*, 119.
- Song, Yan, Kentaro Tomoeda, and Xiaoyu Xia.** 2020. “Sophistication and Cautiousness in College Applications.” SSRN Working Paper 3711118.
- Sun, Liyang, and Sarah Abraham.** 2021. “Estimating Dynamic Treatment Effects in Event Studies with Heterogeneous Treatment Effects.” *Journal of Econometrics*, 225(2): 175–199.
- Troyan, Peter.** 2012. “Comparing School Choice Mechanisms by Interim and Ex-Ante Welfare.” *Games and Economic Behavior*, 75(2): 936–947.

A Additional Figures and Tables

Table A.1: Countries that use IA or DA and have selective secondary schools

Country	Mechanism	Selective Schools in Main Mechanism
Argentina	IA	Yes** (Elacqua, Iribarren and Santos, 2018)
Chile	DA (Student-Proposing)	Yes (Santos and Elacqua, 2016)
Finland	DA (School-Proposing)	Yes** (Salonen, 2014)
France	DA (School-Proposing)	Yes** (Hiller and Tercieux, 2013)
Germany	IA	Yes* (Basteck, Huesmann and Nax, 2015)
Ghana	DA (Student-Proposing)	Yes (Ajayi, Forthcoming)
Hungary	DA (Student-Proposing)	Yes** (Biro, 2012)
Ireland	IA	Yes** (Chen, 2012)
Lesotho	IA	Yes** (Moshoeshoe, 2020)
Netherlands	DA (Student-Proposing)	Yes* (De Haan et al., 2023)
Romania	DA (School-Proposing)	Yes* (OECD, 2017)
Spain	IA	No (Calsamiglia, 2014)
Tunisia	DA (School-Proposing)	Yes (Luflade and Zaiem, 2017)
United Kingdom	DA (Student-Proposing)	Yes

Notes: This tables shows countries that use either immediate acceptance (IA) or deferred acceptance (DA) to assign secondary school students and whether these countries have selective schools in the main assignment mechanism. Information on the presence of selective schools in the main assignment mechanism are in parentheses by country. * indicates that the secondary school assignment system first allocates students into different types of secondary schools with some being more academically oriented. Selection into these types is at least in part based on academic performance. Then students are allocated to a school within their type using an assignment mechanism. ** indicates that secondary schools can use academic performance as a priority or selection criterion but there is no explicit mention of selective schools as in the British system. Finally, no symbol means that there is an explicit selective school presence.

17	Year 13	Key Stage 5	SECONDARY
16	Year 12		
15	Year 11	Key Stage 4	
14	Year 10		
13	Year 9	Key Stage 3	
12	Year 8		
11	Year 7		
10	Year 6	Key Stage 2	PRIMARY
9	Year 5		
8	Year 4		
7	Year 3		
6	Year 2	Key Stage 1	
5	Year 1		
4	Reception	Foundation stage	NURSERY
3	Nursery		
AGE	YEAR	STAGE	SCHOOLS

Figure A.1: British Education System

Notes: This figure presents the British education system, which is divided into primary education (from ages 5 to 10) and secondary education (from ages 11 to 16). Primary education corresponds to Key Stage 1 and 2, while secondary education corresponds to Key Stage 3 and 4, and 5. In this paper, we focus on admissions to secondary schools in England at age 11.

Criteria	2003 code	2007 code
First Preference First	NO REFERENCE	2.13 In setting oversubscription criteria the admission authorities for all maintained schools must not give priority to children according to the order of other schools named as preferences by their parents, including ‘first preference first’ arrangements.
Parental commitment	NO REFERENCE	2.13 In setting oversubscription criteria the admission authorities for all maintained schools must not give priority to children according to their parents’ willingness to give practical support to the ethos of the school or to support the school financially or in some other way.
Children of associated adults	NO REFERENCE	2.13 In setting oversubscription criteria the admission authorities for all maintained schools must not give priority to children whose parents are current or former staff or governors or who have another connection to the school.
Children in care	3.14 Children in public care are a disadvantaged group who have very low average levels of attainment, often related to frequent changes of school because their care placements change. It is recommended that all admission authorities give these children top priority in their oversubscription criteria. Schools designated by the Department as having a religious character may give priority to looked after children of their faith over those children belonging to other faiths. Schools will then also be able to offer places that become available in the school year to these children first over others on the waiting list, if one is maintained, to ensure that they are quickly placed in a school to meet their needs.	2.7 Children in care are among the most vulnerable children in society and it is of paramount importance that a school place is found that is in the best interests of the child as quickly as possible. All admission authorities must give highest priority in their oversubscription criteria to these children as required by the Education (Admission of Looked after Children) (England) Regulations 2006. The practical effect of this is that in a school’s published admission arrangements the first and highest oversubscription criterion must be in respect of these children.
Siblings	3.5 Commonly used and acceptable criteria include sibling links , distance from the school, ease of access by public transport, medical or social grounds (with an explanation of what evidence is required and how this will be assessed), catchment areas, transfer from named feeder primary schools and whether the child is in public care.	Siblings of children who are still at the school 2.17 Many parents will want their children to attend the same school and most admission authorities recognize this and give priority in admissions to siblings. This is generally good practice , with the limited exceptions set out below in the case of the small number of partially selective schools which select more than 10% of their intake by aptitude or ability (see paragraph 2.20), and at those designated grammar schools that rank children according to their performance in a test and allocate places to those who score the highest (see paragraph 2.13(n)). Schools that use any form of selection or banding and test children must observe the provision at paragraph 2.89. [2.89. Admission authorities must not adjust the score achieved by any child in a test in order to take account of oversubscription criteria, such as having a sibling at the school.] Giving priority to siblings particularly supports families with young children of primary school age who may not be able to travel independently. Admission authorities should also consider carefully how other relatives, including those adopted or others living permanently in the household will be treated if a sibling criterion is adopted, and must make this clear in information provided to parents including how terms such as step-children will be defined. Siblings at secondary schools and schools that select 10% or less by ability or aptitude 2.19 At secondary school age, children are usually more independent [than at primary schools] but many parents will still want their children to attend the same schools. Giving

Figure A.2: Changes in Oversubscription Criteria Between the 2003 and 2007 School Admissions Codes

Criteria	2003 code	2007 code
		<p>priority to siblings at secondary schools that have no more than 10% selection by ability or aptitude is acceptable and can be good practice.</p> <p>Siblings at secondary schools that select more than 10% of their intake by ability or aptitude 2.20 A number of secondary schools are permitted under section 100 of the School Standards and Framework Act 1998 to use pre-existing partial selection by ability or aptitude and a number of these admit substantially more than 10% of their intake in this way. Some of these schools give priority for their nonselective places to siblings of children already at the school – whether or not those older siblings secured selective or non-selective places. This reduces the number of non-selective places available to children who do not have siblings at the school. The Government believes that this may lead to the school’s intake including a disproportionately high number of children who would have passed the selection test, as some younger siblings would be likely to have passed the selection test if they had taken it. At the same time, the chance for children who would not have passed the test to gain a place at the school would be correspondingly reduced. It is often the case that children admitted by selection are drawn from a much wider area than those who are not and this reduces the number of non-selective places for children who live closer to the school. Where there are a number of partially selective schools in an area this problem is exacerbated.</p> <p>Former siblings 2.13 In setting oversubscription criteria the admission authorities for all maintained schools must not allocate places at a school on the basis that a sibling or other relative is a former pupil, including siblings who were on roll at the time of application but will have left by the time the child starts school.</p>
Medical/ social needs	3.5 Commonly used and acceptable criteria include sibling links, distance from the school, ease of access by public transport, medical or social grounds (with an explanation of what evidence is required and how this will be assessed) , catchment areas, transfer from named feeder primary schools and whether the child is in public care.	2.24 If admission authorities propose to give higher priority to children for social or medical reasons they must ensure that in doing so they are not failing to comply with paragraph 2.13(g) of this Code, which prohibits the use of oversubscription criteria that discriminate against or disadvantage children because of their special educational needs or disabilities. 2.25 Admission authorities must not use this criterion to give a child a lower priority in obtaining a place at the school, but it is acceptable to give higher priority to children or families where there is a social or medical need (for example where one or both parents or the child has a disability that may make travel to a school further away more difficult).
Catchment	3.5 Commonly used and acceptable criteria include sibling links, distance from the school, ease of access by public transport, medical or social grounds (with an explanation of what evidence is required and how this will be assessed), catchment areas , transfer from named feeder primary schools and whether the child is in public care.	2.35 The 1997 Rotherham40 Judgment confirmed that there is nothing unlawful in the principle of admission authorities operating catchment areas as part of their oversubscription criteria and thereby giving priority to local children whose parents have expressed a preference for the school. However, admission authorities must not guarantee places to parents in a local catchment area, in case the pattern of preferences expressed does not allow this guarantee to be met. In drawing up catchment areas, admission authorities should ensure that they reflect the diversity of the community served by the school, and must not exclude particular housing estates or addresses in a way that might

Criteria	2003 code	2007 code
		<p>disadvantage particular social groups. A catchment area does not prevent parents expressing a preference for the school if they do not live in the area.</p> <p>2.36 Local authorities and admission authorities must not suggest that parents are required to express a preference for the school in whose catchment area they live, or that they have been allocated a place at that school before they have expressed a preference. Local authorities must be clear that parents have a statutory right to express a preference for any school they choose, although they should explain the possible consequences of not expressing a preference for a school in whose catchment area they live.</p> <p>2.37 Some schools have adopted inner and outer catchment areas and these work well for some specialist schools in particular by extending choice to more parents. These work by giving priority for a specified number of places in the inner catchment area and the remaining places in the outer area.</p> <p>2.38 Some schools establish a number of small catchment areas some of which are some distance from school. This practice can exclude some families and if used along with certain other criteria such as partial selection by ability or aptitude or siblings can substantially limit the number of places for families living nearer the school. If using catchment areas in this way admission authorities should take into account the possible effect of their other oversubscription criteria and the admission arrangements at other schools in the area in limiting access to the school.</p> <p>2.39 For children of UK Service personnel and other Crown Servants admission authorities must treat a family returning to their area as meeting the residency criteria for that catchment area even if no house is currently owned in that area once proof of the posting has been provided.</p> <p>2.40 Where catchment areas or distance from the school are used as oversubscription criteria, admission authorities should provide a map of the areas, and indicate how far parents within those areas have succeeded in getting places in the past, and whether that is likely to be a guide for the future. Catchment areas must not be set after applications have been made.</p>
Feeder schools	3.5 Commonly used and acceptable criteria include sibling links, distance from the school, ease of access by public transport, medical or social grounds (with an explanation of what evidence is required and how this will be assessed), catchment areas, transfer from named feeder primary schools and whether the child is in public care.	2.66 The use of named feeder [primary] schools allows local continuity and can support good curriculum and geographical links between phases in an area. Admission authorities must ensure that such arrangements do not disadvantage children from more deprived areas, for example they must not include only feeder primaries that serve more advantaged groups and leave out schools that are a similar distance from the school but serve less advantaged groups.
Special Education Needs	Children with special educational needs and banding 2.84 Children with special educational needs can be included in banding arrangements, that is they can be allocated to the	2.6 All governing bodies are required by section 324 of the Education Act 1996 to admit to the school a child with a statement of special education needs that names the school. This is not an oversubscription criterion. Schools must admit such children whether they have places or not.

Criteria	2003 code	2007 code
	band appropriate to their ability, but schools must not refuse to admit a child with a statement that names the school.	
Faith related	<p>3.9 Schools designated by the Department as having a religious character may give preference in their admission arrangements to members of a particular faith or denomination (as may be required by their Trust Deed), providing this does not conflict with other legislation, such as race relations legislation. Where they do, their admission arrangements should make clear whether a statement of religious affiliation or commitment would be sufficient; whether it is to be ‘tested’ for admission purposes and if so, how; and what, if any, references would be required from the family’s priest, Minister or other religious leader and how they will be used to decide on the application.</p> <p>3.10 Faith schools can contribute to community cohesion by having admission arrangements that are inclusive of other faiths and of all elements of the population of their local area. Some faith schools already achieve inclusiveness by designating a proportion of places for which children of their own faith or denomination will be given priority, and the remainder as community or open places for which local children will be given priority. Note: this is quite different from ‘quotas’ which would reserve places solely for particular groups, and would mean leaving places empty if not enough members of those groups apply. With the repeal by the Education Act 2002 of section 91 of the School Standards and Framework Act 1998, it is no longer possible for foundation and aided schools with a religious character to agree special arrangements with their LEA by which they can keep places empty if they do not have enough applications from their particular faith or denomination. Where evidence of commitment to another faith (or denomination) is required, the guidance in paragraph 3.9 applies.</p> <p>3.11 The governing bodies of Church of England schools that are their own admission authorities must consult their local Diocesan Board about the admission arrangements they are proposing to have for their schools before they go out to statutory consultation with other admission authorities, and they must have regard to the Board’s advice.</p>	<p>2.41 It is unlawful under section 49 of the Equality Act 2006 for maintained, non-maintained or independent schools to discriminate against a child on the grounds of the child’s religion or belief in the terms on which it offers to admit him as a pupil or by refusing to accept an application for a place at the school. However, those schools designated by the Secretary of State as having a religious character (faith schools) are exempt and are permitted to use faith-based oversubscription criteria in order to give higher priority in admissions to children who are members of, or who practice, their faith or denomination. This only applies if a school is oversubscribed.</p> <p>2.42 Faith-based oversubscription criteria must be framed so as not to conflict with other legislation, such as equalities and race relations legislation (see Appendix 1) or the mandatory provisions of this Code. As with all other maintained schools, faith schools are required by section 86 of the School Standards and Framework Act 1998 to offer every child who applies, whether of their faith, another faith or no faith, a place at the school if there are places available.</p> <p>2.43 As with all oversubscription criteria, those that are faith-based must be clear, objective and fair. Parents must easily be able to understand how the criteria will be satisfied. It is primarily for the relevant faith provider group or religious authority to decide how membership or practice is to be demonstrated, and, accordingly, in determining faith-based oversubscription criteria, admission authorities for faith schools should only use the methods and definitions agreed by their faith provider group or religious authority (see paragraph 2.47). It is good practice for the governing bodies of all faith schools that are their own admission authority and that are proposing to use faith-based oversubscription criteria to consult their religious authority before going out to statutory consultation with other admission authorities.</p> <p>2.44 The governing bodies of Church of England schools that are their own admission authorities must consult their local Diocesan Board about the admission arrangements they are proposing for their schools before they go out to statutory consultation with other admission authorities, and they should follow the Board’s advice.</p>



Figure A.3: First Choice Accommodation (with Preference Controls)

Notes: This figure reports the β_t coefficients from the following regression: $y_{it} = \sum_{t \in \mathcal{T}} \beta_t IA_i \cdot T_t + X_i' \delta + \varepsilon_{it}$ where y_{it} is the proportion of students in local authority i in year t receiving their first choice, \mathcal{T} is the set of years that have first choice data from 2007 onwards, IA_i is a dummy variable that is equal to one for IA local authorities, T_t is an indicator for the year t , X_i is a vector of local authority level controls, and ε_{it} is an idiosyncratic error term. The specification shown in this figure controls for the number of preferences in the local authority. Panel (a) is the regression for competitive local authorities, which have a share of selective schools in the top quartile of all local authorities. Non-competitive local authorities are all remaining local authorities. We show the 95% confidence interval of all coefficients. We cluster standard errors at the local authority level.

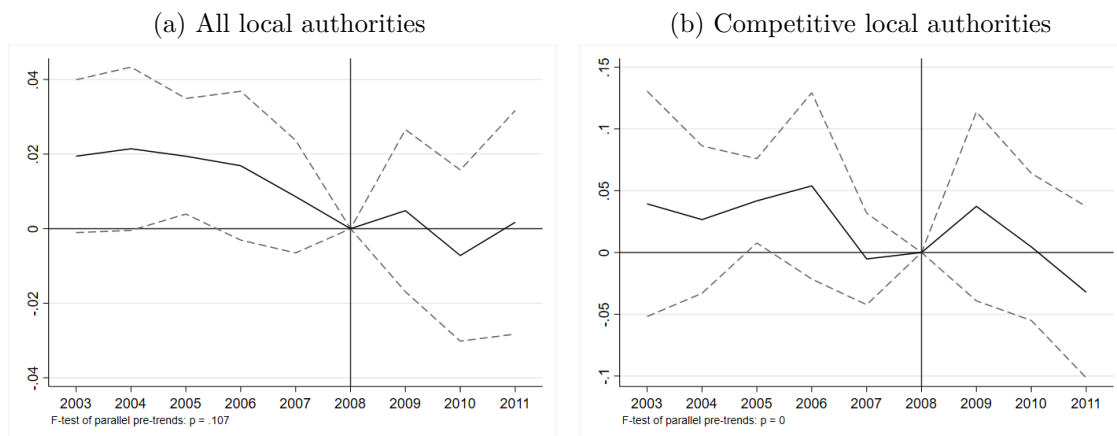


Figure A.4: Event-study evolution of student KS3 scores in IA vs. DA local authorities

Notes: This figure reports coefficients (and 95% confidence intervals) from an event-study regression in which we regress student KS3 test scores on a dummy equal to one for IA local authorities (IA_t), a dummy equal to one for each year between 2003 and 2011 (excluding 2008, the reference year, whose coefficient is set to zero), $Year_t$, and interaction terms between the IA binary variable and each year binary variables. The coefficients we plot are the coefficients of the $IA_t \cdot Year_t$ interaction terms which indicate whether the change in student KS3 scores in IA local authorities was larger than the change in student KS3 scores in DA local authorities. Each regression controls for a vector of LA-level control variables for the average share of each school type (including the share of private schools), the share of schools that use each admission criterion, and the number of schools that students can rank on their list. The coefficient in year t captures the KS3 scores of students who entered secondary school in year t and for whom we observe the KS3 score in year $t + 3$. We complement each regression with a formal F-test of whether the coefficients of the IA-by-year effects are jointly equal to zero in the pre-reform years.

Table A.2: Likelihood of Attending a Selective School

Low-SES X Post-Reform	-0.002 (0.006)
Low-SES	-0.061** (0.024)
Post-Reform	0.009 (0.007)
Constant	0.123*** (0.040)
Observations	1,959,497
R-squared	0.006

Notes: This table shows the regression output from regressing whether a student attends a selective school onto an FSM dummy, reform dummy, and their interaction. The sample contains students in DA local authorities only. Standard errors are clustered at the LA level. *** denote significance at the 1 percent level, ** significance at the 5 percent level, and * significance at the 10 percent level.

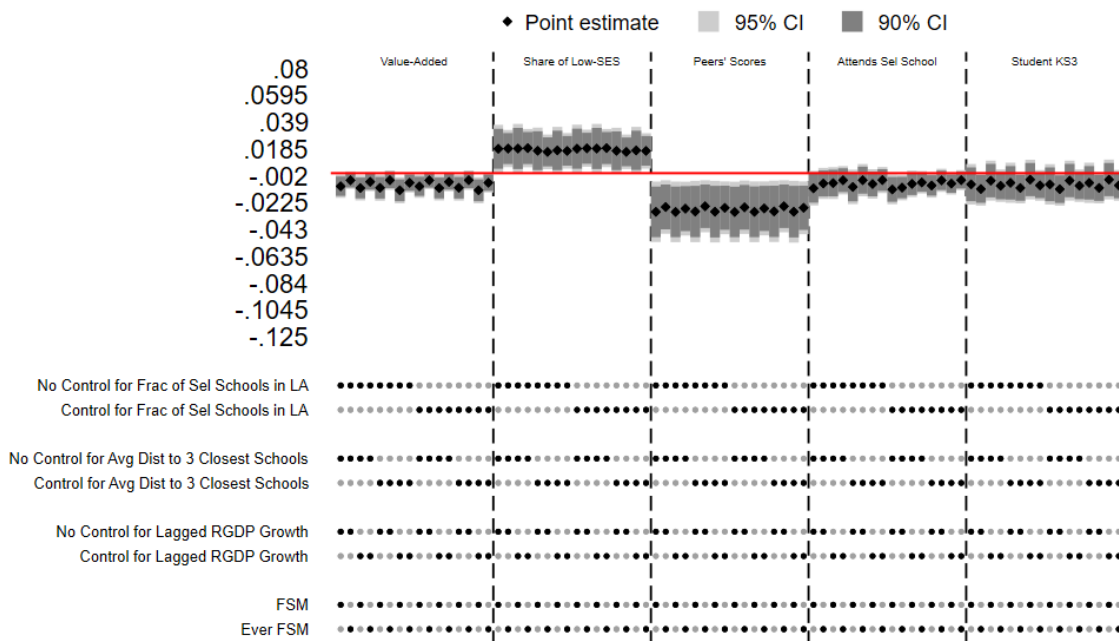


Figure A.5: Additional Robustness Checks for the Effect of the IA Ban

Notes: This figure presents robustness checks for the effect of the IA ban on the following outcomes separated by black dashed bars: the school value-added (labelled as “Value-Added”), the share of low-SES peers (labelled as “Share of Low-SES”), peers’ baseline score (labelled as “Peers’ Scores”), probability of attending a selective school (labelled as “Attends Sel School”), and students’ KS3 score (labelled as “Student KS3”). The four panels report whether we (i) include a control for the share of selective schools in the local authority, (ii) include a control for the LA-level average students’ distance to their three closest schools, (iii) include a control for the LA lagged real GDP growth, and (iv) whether we use an alternative definition of FSM (whether the student was ever FSM before). The baseline specification used here is the same as in Equation (1).

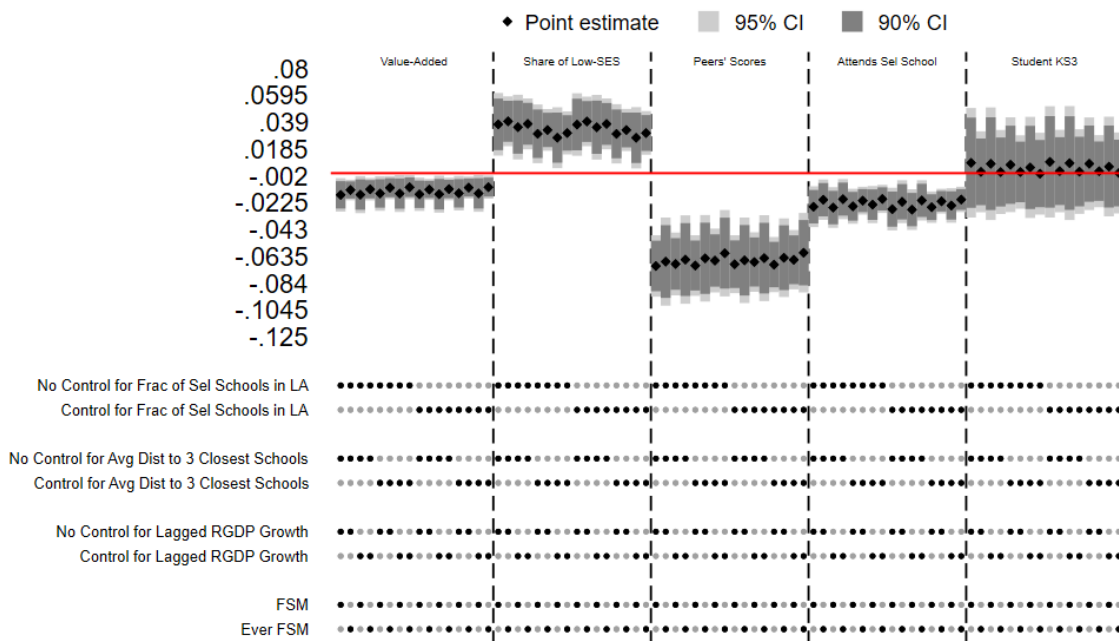


Figure A.6: Additional Robustness Checks for the Effect of the IA Ban (Competitive LAs Only)

Notes: This figure presents robustness checks for the effect of the IA ban on the following outcomes separated by black dashed bars: the school value-added (labelled as “Value-Added”), the share of low-SES peers (labelled as “Share of Low-SES”), peers’ baseline score (labelled as “Peers’ Scores”), probability of attending a selective school (labelled as “Attends Sel School”), and students’ KS3 score (labelled as “Student KS3”). The four panels report whether we (i) include a control for the share of selective schools in the local authority, (ii) include a control for the LA-level average students’ distance to their three closest schools, (iii) include a control for the LA lagged real GDP growth, and (iv) whether we use an alternative definition of FSM (whether the student was ever FSM before). The baseline specification used here is the same as in Equation (1)). Only competitive LAs are included in this figure.

Table A.3: Fraction of Low-SES Students in Local Authority

	All LAs		Competitive LAs		Non-Competitive LAs	
	Unweighted (1)	Weighted (2)	Unweighted (3)	Weighted (4)	Unweighted (5)	Weighted (6)
IA LA X Post-Reform	0.002 (0.007)	0.002 (0.006)	0.009 (0.010)	0.012 (0.010)	0.000 (0.008)	-0.002 (0.009)
IA LA	-0.017 (0.025)	-0.039 (0.031)	-0.001 (0.040)	-0.004 (0.051)	-0.023 (0.030)	-0.041 (0.033)
Post-Reform	0.014*** (0.004)	0.012** (0.005)	0.007 (0.008)	0.004 (0.006)	0.015*** (0.005)	0.017** (0.008)
Constant	0.195*** (0.016)	0.180*** (0.020)	0.187*** (0.028)	0.186*** (0.042)	0.200*** (0.021)	0.176*** (0.021)
Observations	700	700	187	187	509	509
R-squared	0.009	0.028	0.003	0.001	0.013	0.041

Notes: This table shows the results from a DiD specification in which we let a LA level fraction of students who receive Free School Meal (FSM) be a function of a dummy variable indicating whether the LA is using IA before the ban (IA LA), a dummy variable equal to one for the post-reform years (Post-Reform), and the interaction between FPF and post-reform years. Standard errors are clustered at the LA level. Column (1) shows the unweighted regression results for all LAs and column (2) shows the weighted regression results where the weight is the total number of students in the LA. Columns (3) and (4), are analogous to columns (1) and (2), respectively but only competitive LAs are included in the sample. Columns (5) and (6), are analogous to columns (1) and (2), respectively but only non-competitive LAs are included in the sample. *** denote significance at the 1 percent level, ** significance at the 5 percent level, and * significance at the 10 percent level.

Table A.4: Effect of the Transition from IA to DA on High-SES and Low-SES Students (No London LAs)

	School Value-Added	Peers' Baseline Scores	Share of Low-SES	Attends Selective	Attends B25 School	Student KS3 Score
	(1)	(2)	(3)	(4)	(5)	(6)
Panel A. All IA and DA Local Authorities						
Post-Reform X IA LA	0.003 (0.005)	-0.018 (0.013)	0.003 (0.006)	-0.028 (0.017)	-0.009* (0.005)	-0.006 (0.012)
Post-Reform X IA LA X FSM	-0.007* (0.004)	-0.021* (0.011)	0.011 (0.007)	-0.011 (0.008)	0.008 (0.010)	-0.005 (0.008)
Scaled Effect (D-in-D)	.5%	-28.7%	2.2%	-21%	-5.1%	-1.5%
Scaled Effect (D-in-D-in-D)	-1.3%	-33.6%	8.4%	-8.6%	4.1%	-1.3%
Observations	1,880,577	1,881,346	1,881,699	1,881,699	1,880,508	1,358,648
Panel B. Competitive IA and DA Local Authorities						
Post-Reform X IA LA	0.008* (0.004)	-0.006 (0.016)	-0.002 (0.007)	0.006 (0.005)	-0.014* (0.007)	-0.006 (0.043)
Post-Reform X IA LA X FSM	-0.016*** (0.005)	-0.072*** (0.012)	0.032** (0.012)	-0.021** (0.007)	0.024 (0.019)	0.005 (0.020)
Scaled Effect (D-in-D) 1.7%	-4.1%	-1.5%	1.6%	-7.2%	-1.3%	
Scaled Effect (D-in-D-in-D)	-3.4%	-50.4%	22.2%	-6%	12.4%	1.2%
Observations	599,690	599,690	599,690	599,690	599,690	420,657

Notes: This table reports the results from Equation (1), which estimates the differential effect of the FPF ban for high- and low-SES students (in a triple difference spirit) for non-London LAs only. We let a student-level outcome Y_{lti} be a function of a dummy variable indicating whether the local authority is using the FPF admission criteria before the ban IA_l , a dummy variable equal to one for the post-reform years $Post_t$, a dummy variable equal to one for low-SES students $lowSES_i$, the interaction between the IA local authority indicator and post-reform indicator $IA_l \cdot Post_t$, and an interaction between that FSM variable and the $IA_l \cdot Post_t$ interaction. The control variable X_{lt} includes a vector of LA-level control variables for (i) the average share of each school type (including the share of private schools), (ii) the share of schools that use each admission criterion, and (iii) the number of schools that students can rank on their list. The vector X_{lt} also includes two additional interaction terms: $Post_t \cdot lowSES_i$ and $IA_l \cdot lowSES_i$. We cluster standard errors at the local authority level in all regressions. The outcome in column (1) is the shrunken value-added measure of the school that student i attends. The outcome in column (2) is the average KS2 score of all current year 7 students at the school student i attends. We call this the a student's peers' baseline score. The outcome in column (3) is the proportion of low-SES peers at the school student i attends. The outcome in column (4) is an indicator of whether the student attends a selective school. The outcome in column (5) is an indicator of whether a student attends a school with an average KS2 score in the bottom 25% of the local authority. Finally, the outcome in column (6) is an indicator of whether student i achieved level 6 in both their English and Mathematics KS3 assessment, which is the standard expectation. All regressions include students attending non-selective and selective schools. *** denote significance at the 1 percent level, ** significance at the 5 percent level, and * significance at the 10 percent level.

Table A.5: Characteristics of Nearest School of FPF School (vs. EP)

	All Local Authorities		Competitive Local Authorities	
	(1)	(2)	(3)	(4)
% low-SES students	-0.038 (0.109)	-0.036 (0.111)	-0.178 (0.127)	-0.144 (0.130)
Selective school	0.027 (0.093)	- -	0.166* (0.091)	- -
% students with KS2 score in bottom 10th pctil	-0.046 (0.200)	-0.036 (0.205)	-0.375* (0.211)	-0.291 (0.205)
% students with KS2 score in bottom 25th pctil	-0.050 (0.121)	-0.042 (0.126)	-0.270* (0.132)	-0.215* (0.125)
% students with KS2 score in top 25th pctil	0.084 (0.106)	0.071 (0.123)	0.352** (0.146)	0.287** (0.136)
% students with KS2 score in top 10th pctil	0.203 (0.165)	0.188 (0.202)	0.654** (0.275)	0.549** (0.263)
Control for selective school	no	yes	no	yes

Notes: This table shows the coefficient of interest in a series of regressions that regresses the original school's FPS status onto a school level outcome of the nearest school (proportion of FSM students, whether it is a selective school, proportion of students in the top 25%/10% KS2 and bottom 25%/10% KS2). The first two columns contain schools in all local authorities, and the latter two columns contain schools in competitive LAs only. Columns (1) and (3) contain the regression with controls of other characteristics of both the original school and the closest school. Columns (2) and (4) have the same specification as Columns (1) and (3) but also include an indicator for whether the closest school is a selective school for all regressions.

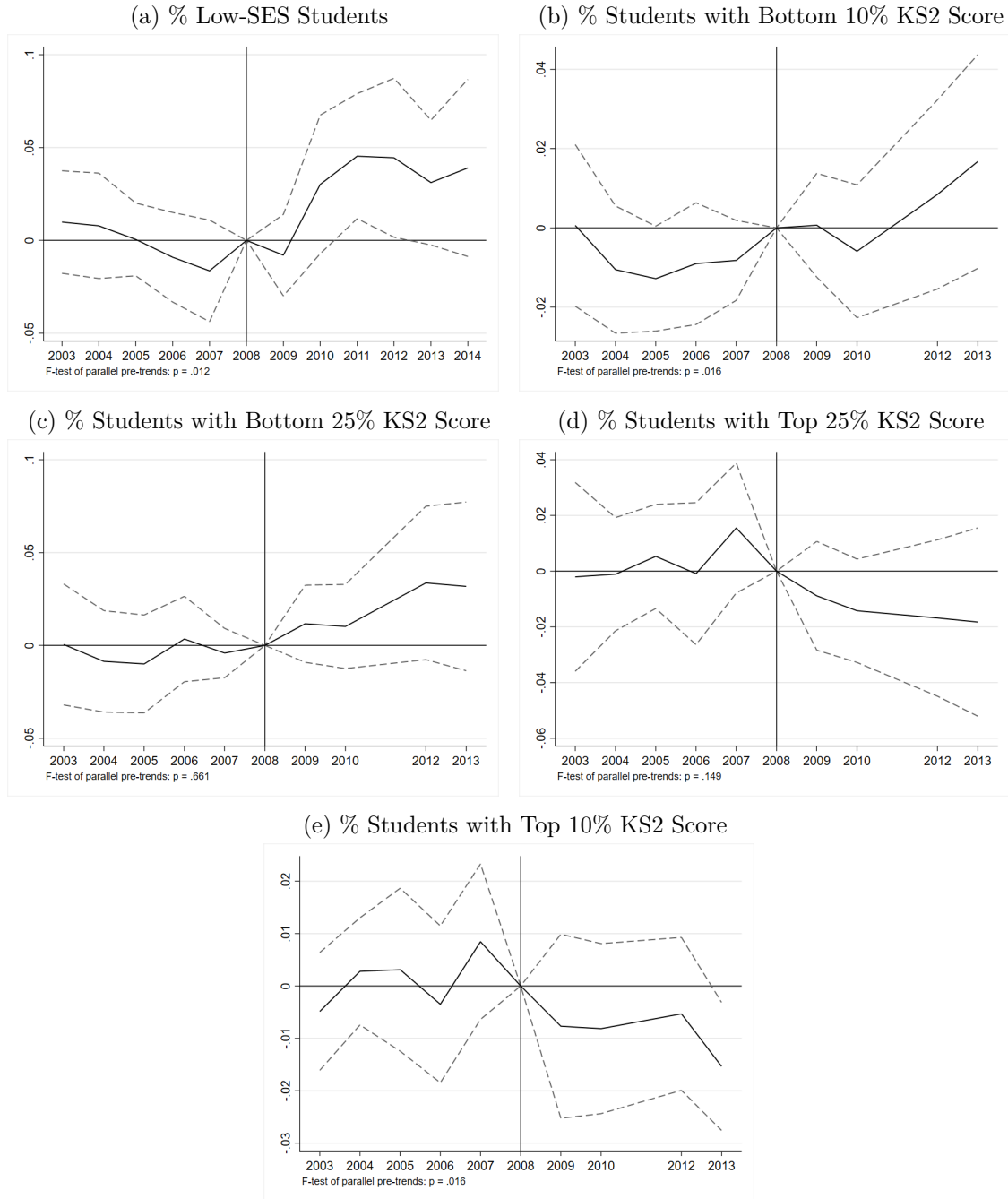


Figure A.7: Event-Study Effect of the FPF Ban on FPF Schools' Composition (Competitive LAs)

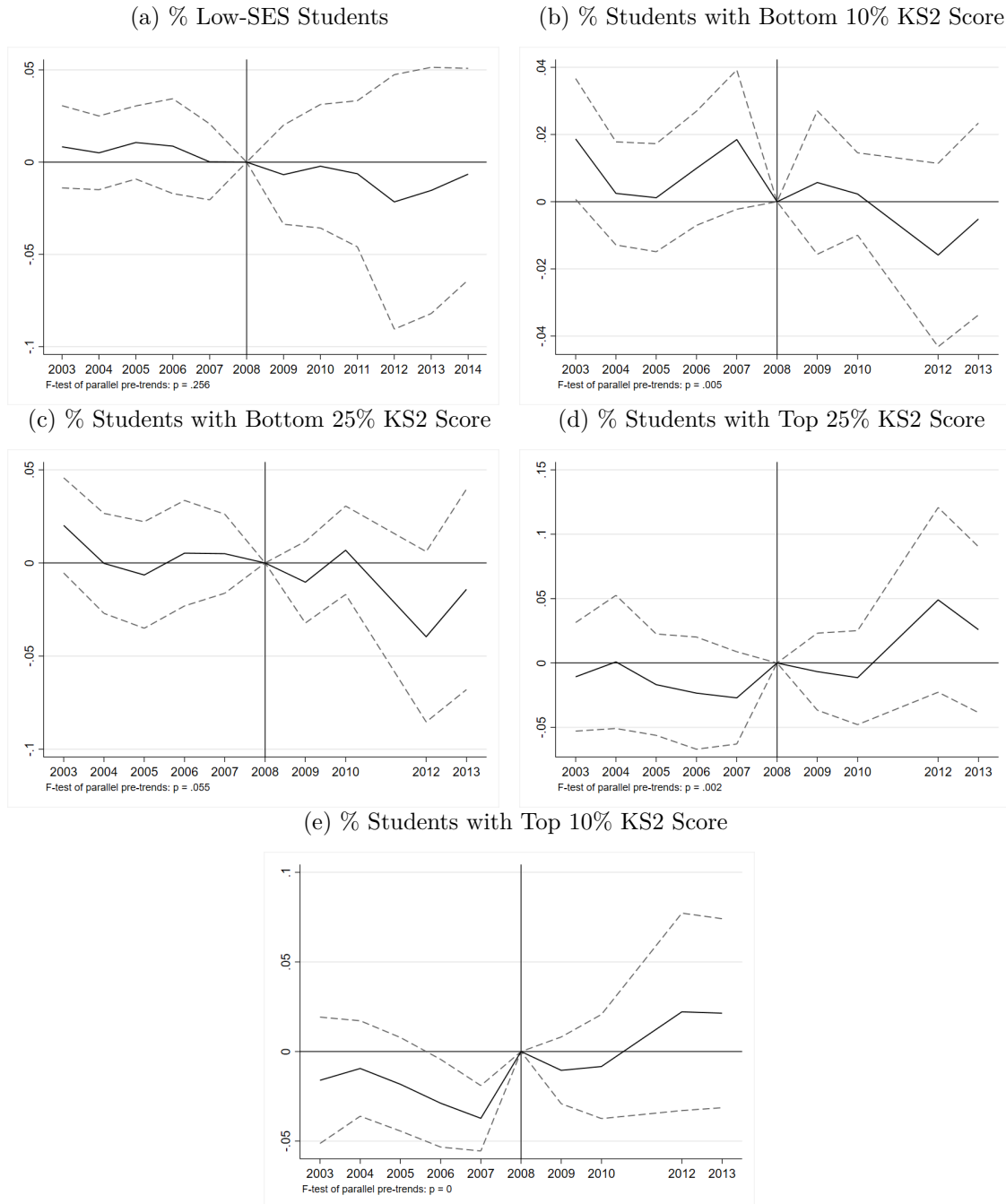
Notes: This figure provides a graphical visualization of pre-trends in outcomes by reporting coefficients (and 95% confidence intervals) from an event-study version of Equation (2) in which we replace the dummy variable equal to one for the post-reform years by a dummy for each year $Year_t$ (excluding 2008, the reference year, whose coefficient is set to zero). The coefficients we plot are the coefficients of the $FPF_s \cdot Year_t$ interaction terms which capture the change in outcome in FPF schools compared to the change in EP schools. Each regression contains the same set of controls as the ones in Equation (2), i.e. controls for school-level characteristics including school type, and each admission criterion used by schools. We complement each regression with a formal F-test of whether the coefficients of the FPF-by-year effects are jointly equal to zero in the pre-reform years. The p-values of the test are reported in the bottom-left side of each graph. We report results for five school-level outcome variables: the share of Free School Meal recipients, the share of students whose KS2 test score is below the 90th and 75th percentiles of their cohort distribution, and the share of students whose KS2 test score is above the 25th and 10th percentiles. This figure only includes schools in competitive LAs.

Table A.6: Effect of the FPF Ban on the Composition of FPF Schools' Neighbours

	Low	Student Test Score Percentile			
	SES (1)	Bottom 10 (2)	Bottom 25 (3)	Top 25 (4)	Top 10 (5)
Panel A. All Local Authorities					
FPF X Post-Reform	-0.035* (0.018)	-0.017** (0.007)	-0.024* (0.014)	0.028 (0.024)	0.023 (0.017)
Scaled Effect	-19.6%	-17.2%	-9.8%	10.5%	19.7%
Observations	16,722	14,190	14,190	14,190	14,190
R-squared	0.229	0.161	0.182	0.193	0.192
Panel B. Competitive Local Authorities					
FPF X Post-Reform	-0.069** (0.028)	-0.030* (0.014)	-0.066* (0.032)	0.157** (0.069)	0.143** (0.052)
Scaled Effect	-39.5%	-31.1%	-28.5%	49.3%	93.2%
Observations	5,565	4,735	4,735	4,735	4,735
R-squared	0.334	0.270	0.311	0.371	0.396

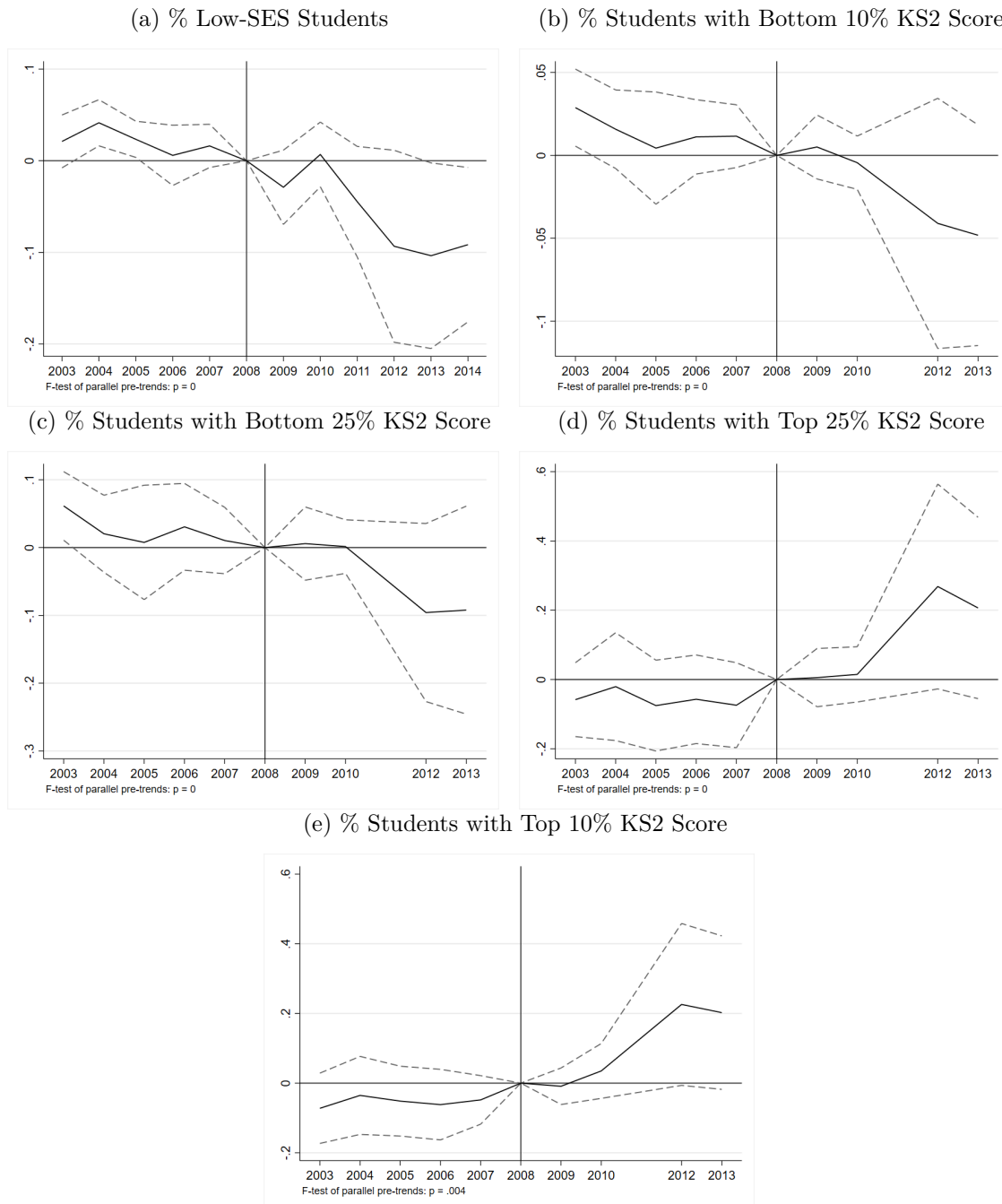
Notes: This table reports DiD estimates of the effect of preventing schools from using the first preference first admission criterion. The school-level outcome is for one of the two nearest schools given a fixed starting school. The DiD specification we use let a school-level outcome (Y_{st}) be a function of a dummy variable indicating whether a school is using the FPF admission criteria before the ban (FPF_s), a dummy variable equal to one for the post-reform years ($Post_t$), and the interaction between FPF and post-reform years $FPF_s \cdot Post_t$. Each regression includes a set of controls for school-level characteristics including school type, and each admission criterion used by schools. We cluster standard errors at the local authority level. We use five outcome variables: in each school's two nearest schools that are not using the FPF admission criterion, we compute the share of students who receive Free School Meal (FSM), as well as the share whose KS2 test score is below the 90th and 75th percentiles of their cohort distribution, and the share of students whose KS2 test score is above the 25th and 10th percentiles. *** denote significance at the 1 percent level, ** significance at the 5 percent level, and * significance at the 10 percent level.

Figure A.8: Event-Study Effect of the FPF Ban on the Composition of FPF Schools' Neighbours—
All Local Authorities



Notes: This figure provides a graphical visualization of pre-trends in outcomes by reporting coefficients (and 95% confidence intervals) from an event-study version of the regression results in Panel A. of Table A.6. We replace the dummy variable equal to one for the post-reform years by a dummy for each year $Year_t$ (excluding 2008, the reference year, whose coefficient is set to zero). The coefficients we plot are the coefficients of the $FPF_s \cdot Year_t$ interaction terms which capture the change in outcome in FPF schools' neighbouring schools compared to the change in EP schools' neighbouring schools. Each regression contains the same set of controls as the ones in Table A.6. We complement each regression with a formal F-test of whether the coefficients of the FPF-by-year effects are jointly equal to zero in the pre-reform years. The p-values of the test are reported in the bottom-left side of each graph. We report results for five school-level outcome variables: the share of Free School Meal recipients, the share of students whose KS2 test score is below the 90th and 75th percentiles of their cohort distribution, and the share of students whose KS2 test score is above the 25th and 10th percentiles.

Figure A.9: Event-Study Effect of the FPF Ban on the Composition of FPF Schools' Neighbours—Competitive Local Authorities



Notes: This figure provides a graphical visualization of pre-trends in outcomes by reporting coefficients (and 95% confidence intervals) from an event-study version of the regression results in Panel B. of Table A.6. We replace the dummy variable equal to one for the post-reform years by a dummy for each year $Year_t$ (excluding 2008, the reference year, whose coefficient is set to zero). The coefficients we plot are the coefficients of the $FPF_s \cdot Year_t$ interaction terms which capture the change in outcome in FPF schools' neighbouring schools compared to the change in EP schools' neighbouring schools. Each regression contains the same set of controls as the ones in Table A.6. We complement each regression with a formal F-test of whether the coefficients of the FPF-by-year effects are jointly equal to zero in the pre-reform years. The p-values of the test are reported in the bottom-left side of each graph. We report results for five school-level outcome variables: the share of Free School Meal recipients, the share of students whose KS2 test score is below the 90th and 75th percentiles of their cohort distribution, and the share of students whose KS2 test score is above the 25th and 10th percentiles.

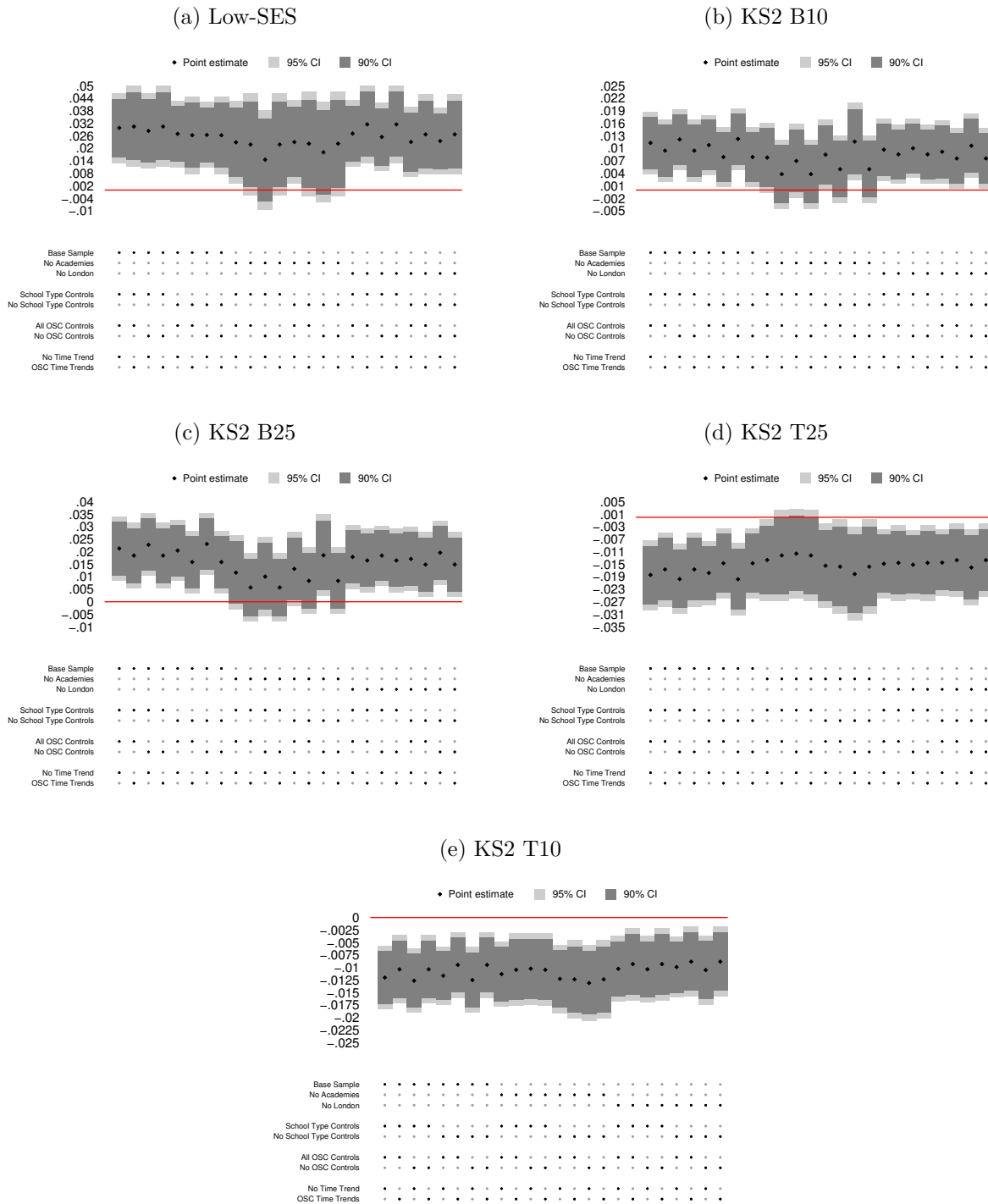


Figure A.10: Effect of the FPF Ban on FPF Schools' Composition (Relative to EP)

Notes: This figure presents a detailed version, outcome by outcome, of the robustness checks for the effect of the FPF ban on school composition presented in Figure 13. See Figure 13 for more details.

B Value-Added Computation

We compute a school’s value-added using the following specification that is similar to what is outlined in [Koedel, Mihaly and Rockoff \(2015\)](#)

$$y_{ist} = X'_{ist}\beta + Z'_{st}\gamma + \theta_s + \varepsilon_{ist}, \quad (\text{B.1})$$

where y_{ist} is a dummy variable that measures whether year 7 student i who attends school s in year t has level 2 qualifications in at least five GCSE exams including English and Mathematics⁸², X_{ist} is a vector of student characteristics (the student’s KS2 score, gender, race, and free school meal eligibility), Z_{st} is a vector of time-varying school characteristics (the average KS2 scores of the school’s current intake, the school’s racial and gender composition, and the proportion of the school’s year 7 students who qualify for a free school meal), θ_s is school s ’s fixed effect, and ε_{ist} is an idiosyncratic error term. The student’s KS2 score acts as a proxy for the lagged test score of student i as students take the GCSE tests after the KS2 test. These controls are consistent with those used in past studies (e.g. [Aaronson, Barrow and Sander, 2007](#); [Kane et al., 2013](#); [Chetty, Friedman and Rockoff, 2014](#); [Koedel, 2009](#)). We can interpret a school’s value-added as the contribution to a student’s likelihood of obtaining level 2 qualifications in at least five GCSE exams including English and Mathematics.

To account for noise in the fixed effects estimates ([Kane and Staiger, 2002](#)), we construct an empirical Bayes estimate of the school’s value-added. We follow the general procedure of [Koedel, Mihaly and Rockoff \(2015\)](#). The shrunken value-added estimate is given by:

$$\hat{\theta}_s^{EB} = \alpha_s \hat{\theta}_s + (1 - \alpha_s) \bar{\theta}. \quad (\text{B.2})$$

In Equation (B.2), $\hat{\theta}_s$ is the fixed effect estimate for school s obtained from estimating Equation (B.1), $\bar{\theta}$ is the average of all schools’ value-added weighted by the number of students, and $\alpha_s = \frac{\hat{\sigma}^2}{\hat{\sigma}^2 + \hat{\lambda}}$, where $\hat{\sigma}^2$ is the estimate for the variance of the school fixed effects and $\hat{\lambda}$ is the estimate of the variance of the estimate of $\hat{\theta}_s$. To compute $\hat{\lambda}$ we take the square of the standard error of $\hat{\theta}_s$. We employ the software developed by [Chandra et al. \(2016\)](#), who follow the procedure of [Morris \(1983\)](#) to compute $\hat{\sigma}^2$ and ultimately to compute the shrunk estimates of value-added. Figure B.1 plots the distribution of the value-added estimates with and without shrinkage.

Heterogenous value-added for high-SES and low-SES students. To obtain the estimates for the heterogeneous school value-added by SES we estimate the following:

$$y_{ist} = X'_{ist}\beta + Z'_{st}\gamma + \theta_s + \kappa_s LowSES_{ist} + \varepsilon_{ist}. \quad (\text{B.3})$$

The notation of Equation (B.3) follows that of Equation of (B.1) with the addition of $LowSES_{ist}$ which is an indicator that is equal to 1 when a student is low-SES and 0 when the student is high-SES. The new term $\kappa_s LowSES_{ist}$ is an interaction between the school’s fixed effect and the student’s low-SES indicator. Thus the estimated value-added of school s is $\hat{\theta}_s$ for high-SES students and $\hat{\theta}_s + \hat{\kappa}_s$ for low-SES students.⁸³ As previously, we compute shrunk estimates following Equation (B.2) for the entire sample of value-added estimates.

⁸²Achieving level 2 in five subjects including English and Mathematics is a standard performance metric used to assess both students success and school performance. This indicator is reported in schools performance tables published by the Department for Education.

⁸³The specification is similar to the approach [Dee \(2004\)](#) uses.

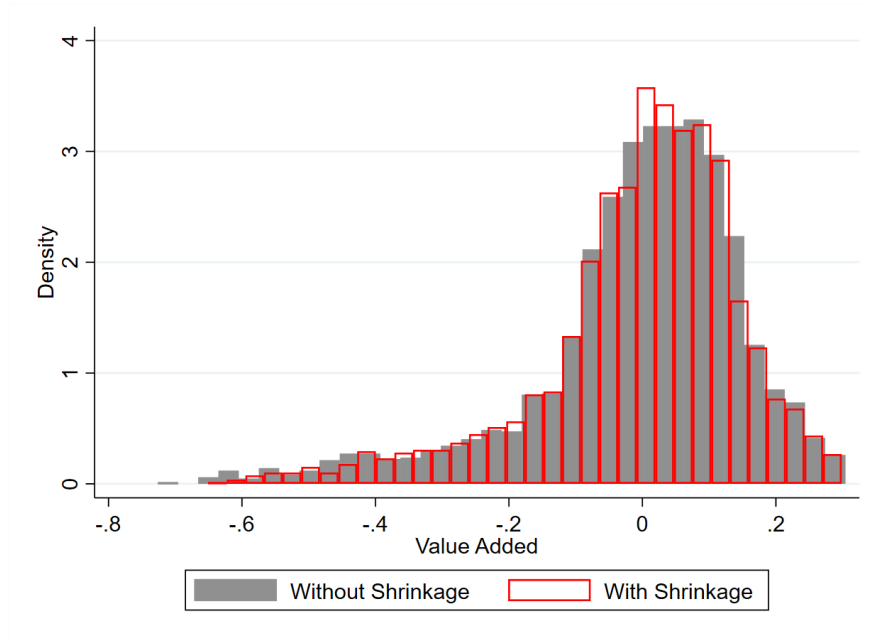


Figure B.1: Distribution of School Value-Added (with and without Shrinkage)

Notes: The gray bars denote the value-added estimates without shrinkage and the red outlined bars denote the value-added estimates with shrinkage. The standard deviation is 0.15 and 0.16 with and without shrinkage, respectively.

Table B.1: Correlation Between School Value-Added and Schools' Characteristics Pre-Reform

	School KS2 (1)	School KS3 (2)	School FSM (3)	Selective (4)
Covariance	0.218*** (0.003)	0.357*** (0.004)	-0.743*** (0.006)	0.078*** (0.003)
Constant	0.497*** (0.001)	0.380*** (0.002)	0.625*** (0.001)	0.491*** (0.001)
Observations	16,532	19,167	19,247	19,248
R-squared	0.313	0.251	0.482	0.027

Notes: This table contains the regression outcomes by regressing the school value-added measure (with shrinkage) onto various school characteristics. The characteristics are: (1) the average KS2 score of the current intake of year 7 students at school s , (2) the average KS3 achievement of the current intake of year 7 students at school s , (3) the proportion of students who qualify for a free school meal (low-SES) at school s , and (4) a dummy variable of whether school s is selective. *** denote significance at the 1 percent level, ** significance at the 5 percent level, and * significance at the 10 percent level.